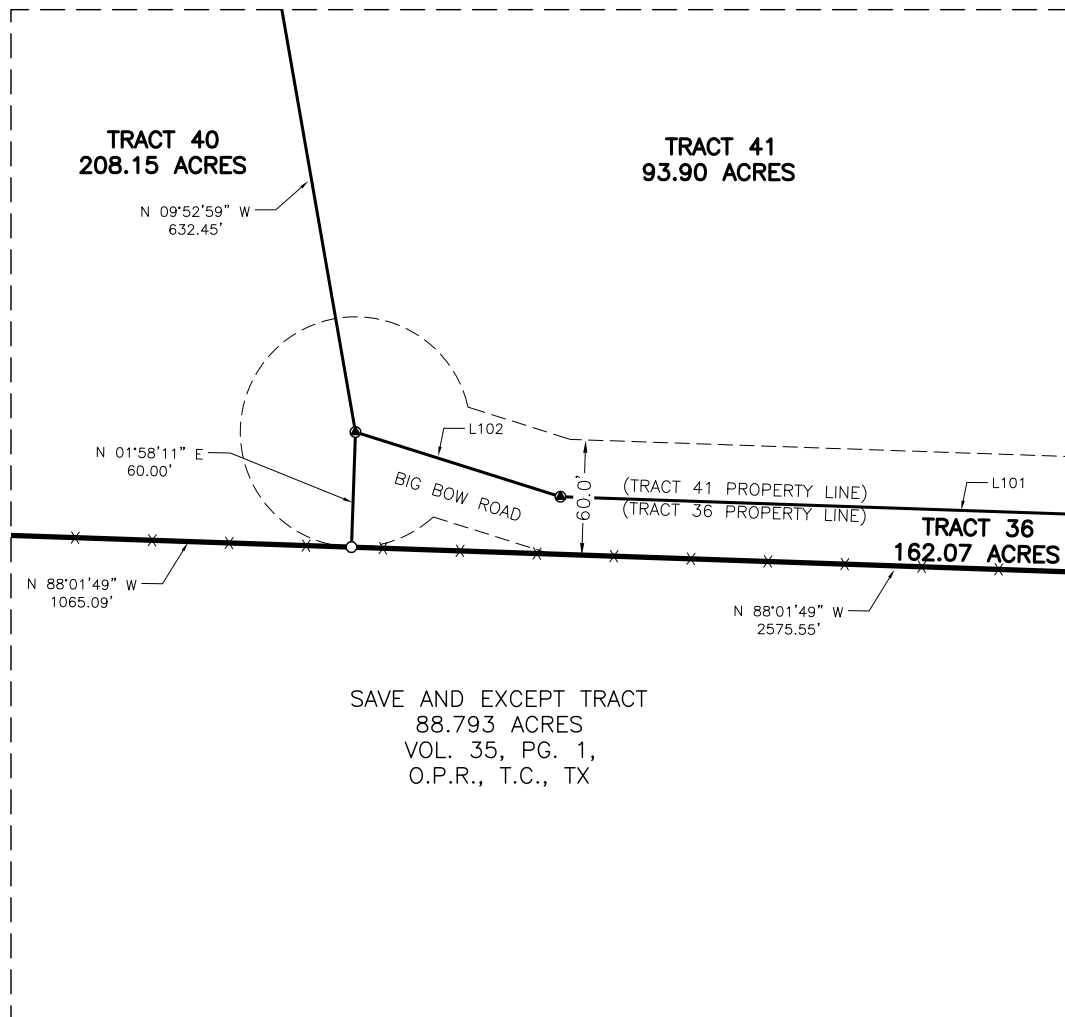
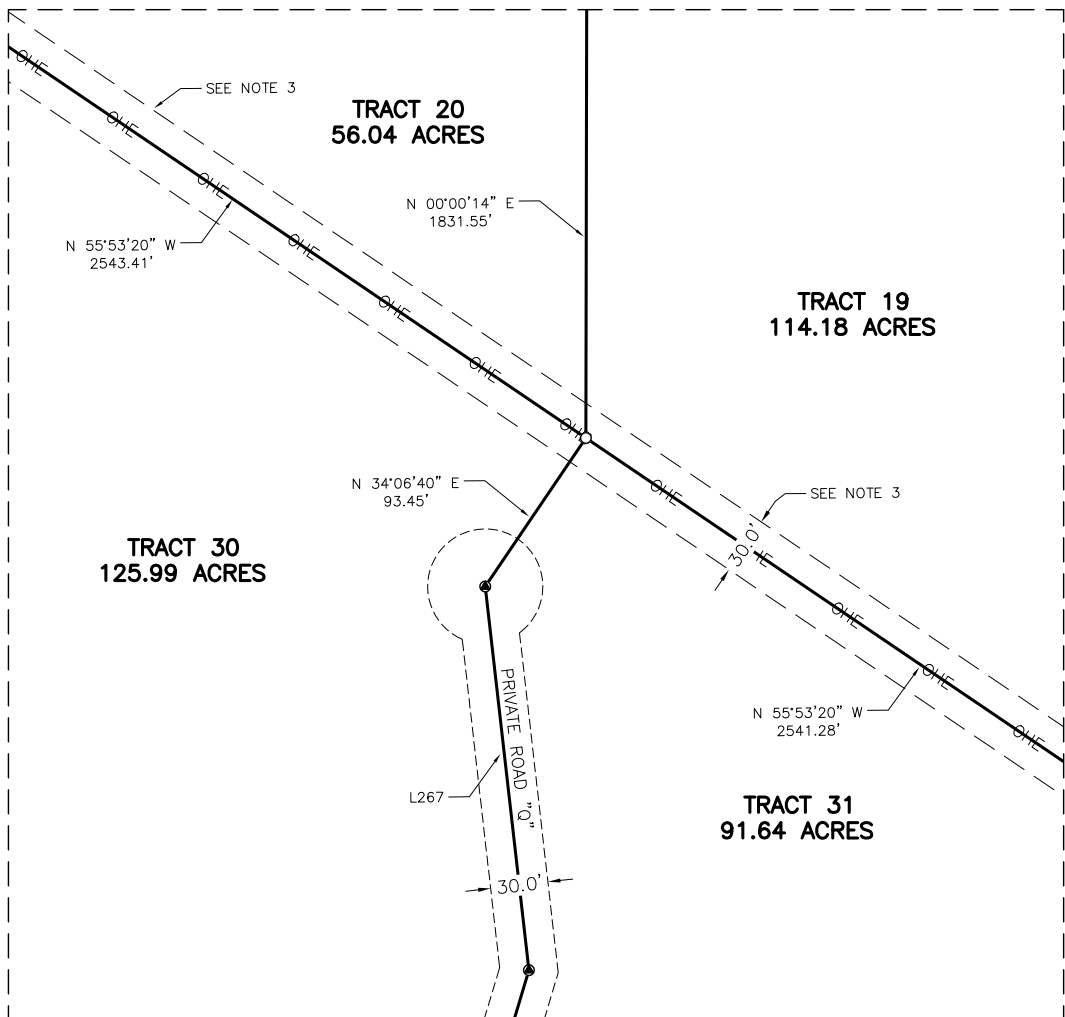
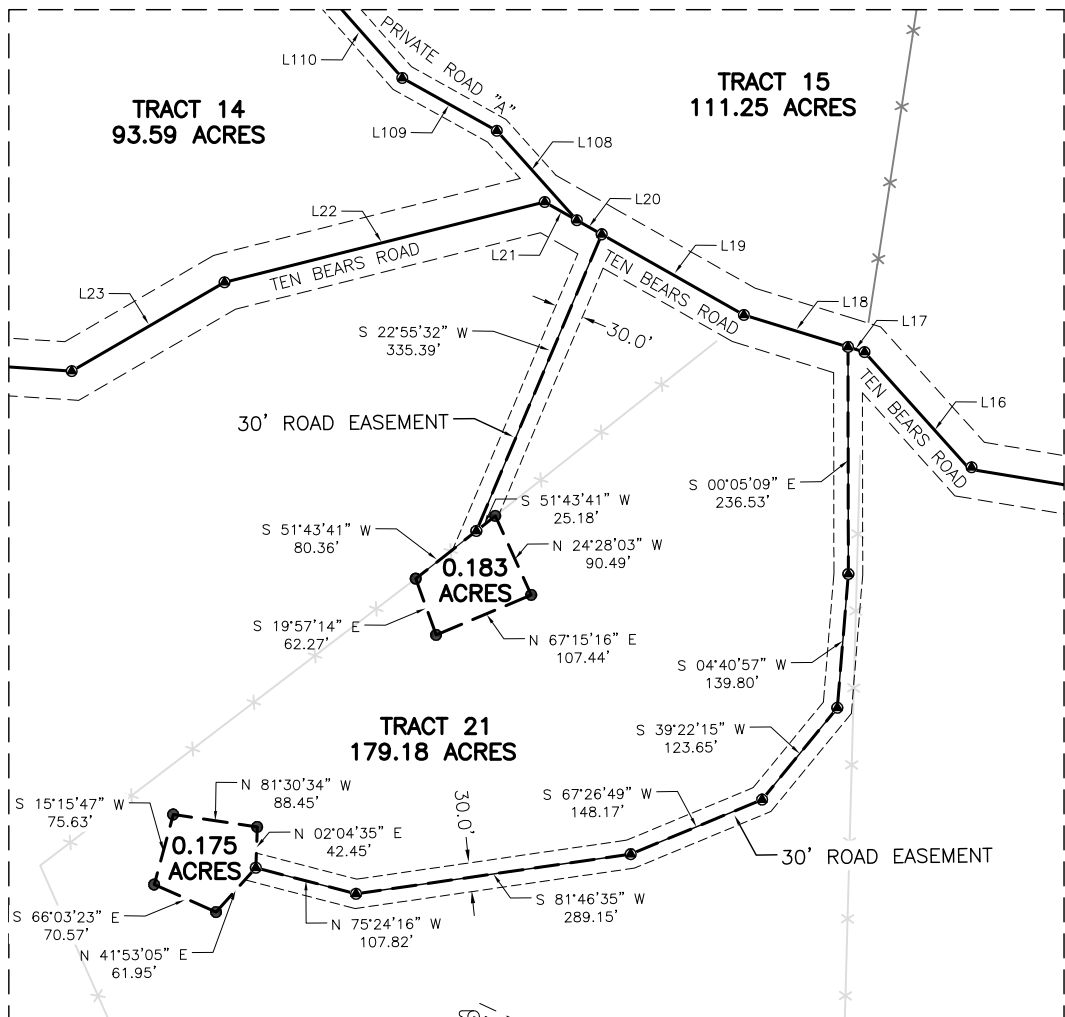
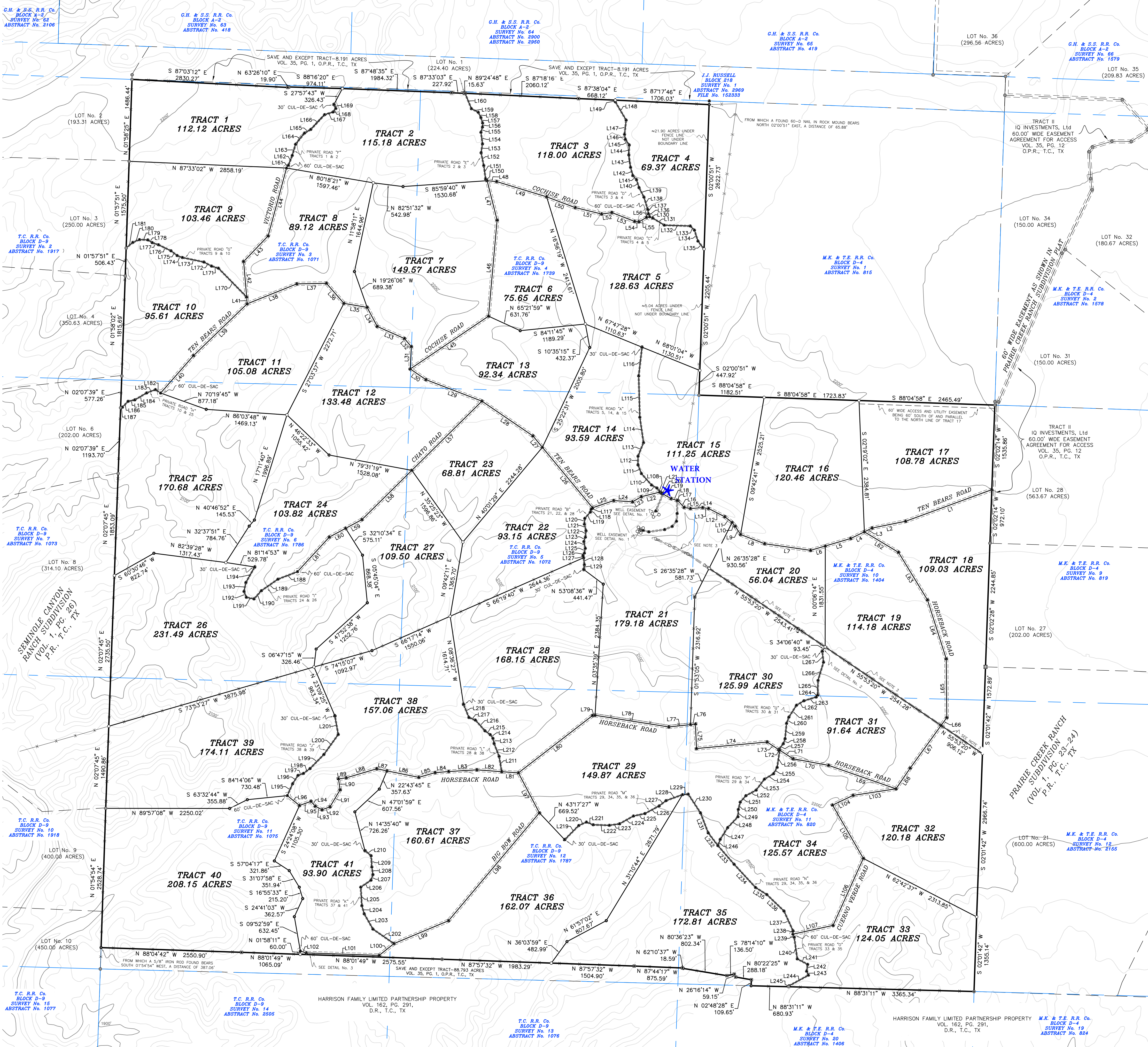


FINAL PLAT OF THE INDIAN WATERHOLE RANCH SUBDIVISION

TERRELL COUNTY, TEXAS



DETAIL No. 1 - SCALE 1"=200'
0.183 ACRES (IN TRACT 21)
AND 0.175 ACRES (IN TRACT 21)
SHARED WATER WELL EASEMENTS AND 30' ROAD EASEMENTS
1/2 INTEREST TRACT 21
1/2 INTEREST RETAINED BY IQ INVESTMENTS, LTD.

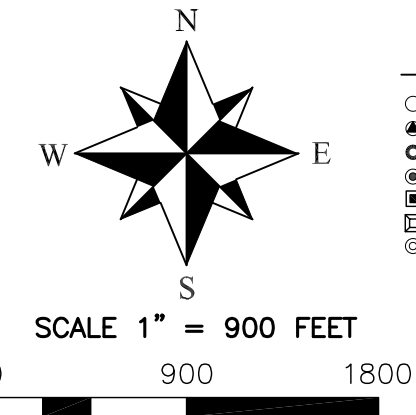
DETAIL No. 2
SCALE 1"=100'

DETAIL No. 3
SCALE 1"=100'

- NOTES:
1. 1/2" RODS WITH ALUMINUM CAPS STAMPED WITH TRACT NUMBERS ARE PLACED EVERYWHERE THAT A PROPERTY LINE INTERSECT A 60' WIDE R.O.W. LINE.
 2. 1/2" RODS WITH ALUMINUM CAPS STAMPED WITH TRACT NUMBERS ARE PLACED EVERYWHERE THAT A PROPERTY LINE INTERSECT A 30' WIDE R.O.W. LINE.
 3. 30' WIDE UTILITY EASEMENT BEING 15' ON EACH SIDE OF AND PARALLEL TO THE CENTERLINE OF AN EXISTING OVERHEAD ELECTRIC LINE.

Surveyor's Note
Bearing Basis herein is Texas State Plane Coordinate System, Reference Frame North American Datum 1983 (2011) (EPCH 2010.0000), as determined from Global Navigation Satellite System (GNSS) survey equipment by Static, Virtual Reference System (VRS) network and or Real Time Kinematic (RTK). Distances shown herein are shown as grid Texas State Plane Coordinate System distances.

Basis of Bearings
Bearing Basis herein is Texas State Plane Coordinate System, Reference Frame North American Datum 1983 (2011) (EPCH 2010.0000), as determined from Global Navigation Satellite System (GNSS) survey equipment by Static, Virtual Reference System (VRS) network and or Real Time Kinematic (RTK). Distances shown herein are shown as grid Texas State Plane Coordinate System distances.



LINE AND CURVE TABLE ON SHEET 3 OF 3

MASTER LEGEND		
○ SET 1/2" IRON ROD W/ ALUMINUM CAP	--- SUBDIVISION/INTERIOR TRACT BOUNDARY	IRF IRON ROD FOUND
● SET 8" MAG NAIL WITH WASHER UNLESS NOTED	--- ADJACENT PROPERTY LINE	IRF IRON ROD FOUND
○ SET 1/2" IRON ROD CAPPED "M"	--- EASEMENT	IPF IRON PIPE FOUND
○ PIPE FENCE POST	--- SUBDIVISION ROAD RIGHT-OF-WAY	IPF IRON PIPE FOUND
○ WOODEN FENCE CORNER POST	--- WIRE FENCE	IPF IRON PIPE FOUND
○ LARGE ROCK MOUND	--- SURVEY LINE	IPF IRON PIPE FOUND
○ FOUND 1/2" IRON ROD	--- 20' CONTOUR LINE	IPF IRON PIPE FOUND
	--- 100' CONTOUR LINE	IPF IRON PIPE FOUND

I, Wesley Ray Quinn, Registered Professional Land Surveyor of Texas, do hereby state that this plat represents an actual survey made under my direction to the best of my knowledge and ability, this 18th day of August, 2024.

Wesley Ray Quinn
6625
REGISTERED PROFESSIONAL LAND SURVEYOR