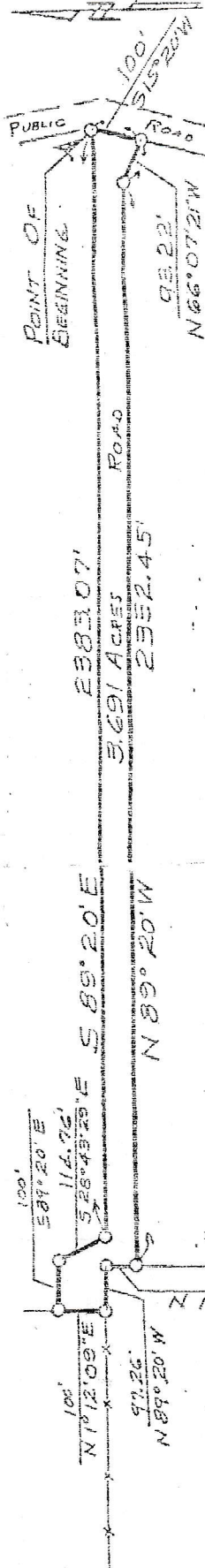


FIELD NOTES



All that certain lot, tract or parcel of land being a part of the James Garland Survey A-361 located about 19 miles N 63° W of the City Paris, Lamar County, Texas being a part of a 986.58 acre tract of land described in a deed from J.R. Turner et ux Wanda Turner to Thaberview Enterprises Inc. dated January 20, 1970 recorded in Vol. 507 page 299 the Deed Records of Lamar County, Texas being a part of a 101.07 acre tract described in a deed from William Edward McCabe to Benjamin Osher dated October 17, 1985 recorded in Vol. 690 page 56 of the Deed Record of Lamar County, Texas and being a part of a 98.33 acre tract described in a deed from Benjamin Osher to Tommie J. Hartgrove et ux Carolyn J. Hartgrove dated October 4, 1985 recorded in Vol. 689 page 406 of the Deed Records of Lamar County, Texas and being more particularly described as follows:

BEGINNING at a 3/8" spike nail set in the W B L of a Public Road the North East corner being the North East corner of said 98.33 acre tract

THENCE S 15° 20' W along the W B L of a Public Road a distance of 100.0 feet to a 3/8" spike nail set for the South East corner;

THENCE N 66° 07' 21" W a distance of 93.22 feet to a 3/8" spike nail set for a point;

THENCE N 89° 20' W a distance of 2332.45 feet to a 3/8" spike nail set in the E B L of a 35.12 acre tract for a corner;

THENCE N 1° 02' 06" W along the E B L of a 35.12 acre tract a distance of 60 feet to a 3/8" spike nail set in the N B L of said 98.33 acre tract the S B L of said 101.07 acre tract for a corner;

THENCE N 89° 20' W along the N B L of said 98.33 acre tract and S B L of said 101.07 acre tract a distance of 97.26 feet to a 3/8" spike nail set in the E B L of a 35.155 acre tract for a corner;

THENCE N 1° 12' 09" E along the E B L of a 35.155 acre tract a distance of 100 feet to a 3/8" spike nail set for a corner;

THENCE S 89° 20' E a distance of 100 feet to a 3/8" spike nail set for a corner;

THENCE S 28° 43' 29" E a distance of 114.76 feet to a 3/8" spike nail set in the S B L of said 101.07 acre tract and the N B L of said 98.33 acre tract for a corner;

THENCE S 89° 20' E along the common boundary line of said 101.07 acre tract and said 98.33 acre tract a distance of 2383.07 feet to a 3/8" spike nail set for the North East corner being the POINT OF BEGINNING and containing 3.691 acres of land more or less.

I, Bob B. Baker, Registered Public Surveyor # 2691 in the State of Texas certify the above Survey was performed on the ground and is true and correct to the best of my knowledge and that there are no visible easements or encroachments other than those shown hereon.

Dated: February 3, 1986

Bob B. Baker R P S # 2691

4.6
12

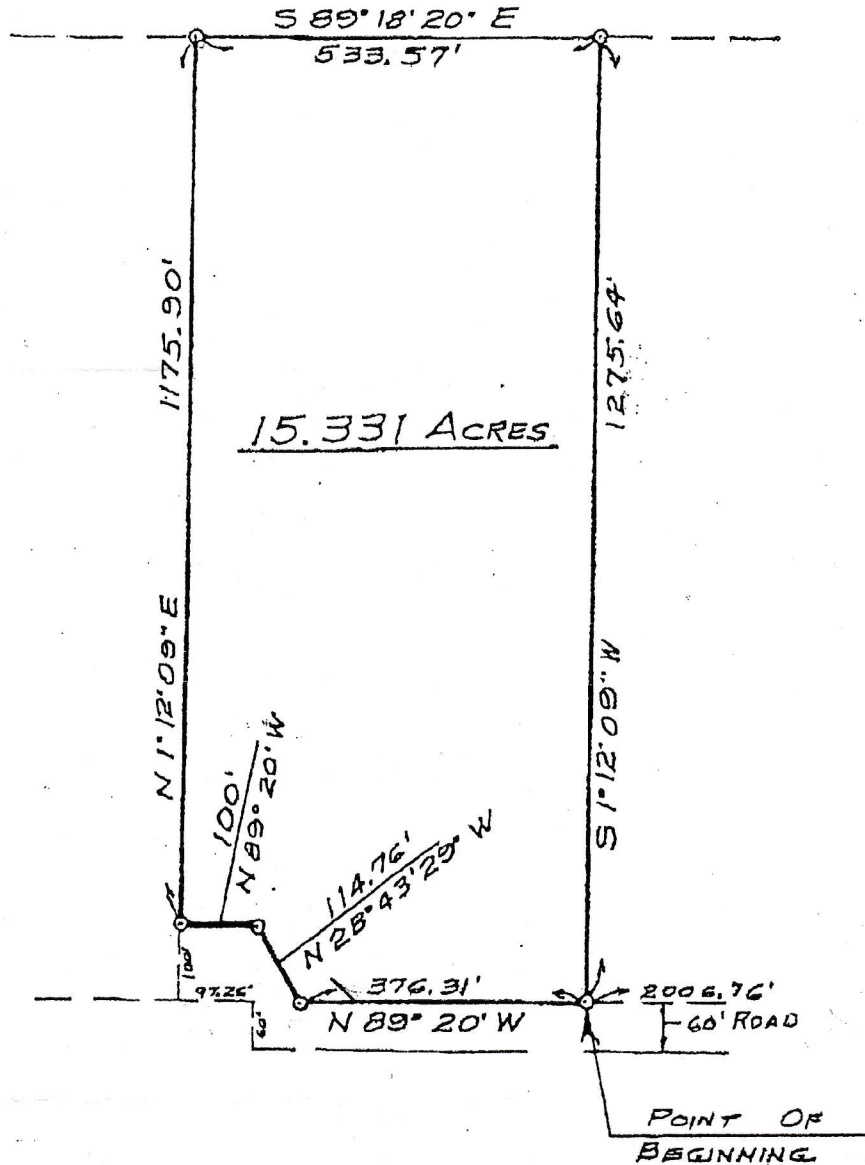
EXHIBIT A

15.331 ACRE TRACT
JAMES GARLAND SURVEY A-361
LAMAR COUNTY TEXAS

North 11051 0411 21
75446
Co Line Rd 37100

SCALE 1" = 200'

at
orig 33° 47' 51" N
95° 51' 05" W



Dated: February 17, 1986

Bob B. Baker R S P # 2691