

# We know this land.



**Eshenbaugh**  
**LAND COMPANY**

**The Dirt Dog**



304 S. WILLOW AVENUE

TAMPA, FL 33606

813.287.8787

[www.thedirtdog.com](http://www.thedirtdog.com)

# Property Description

## PROPERTY DESCRIPTION

The subject property consists of an outparcel totaling 2.17 acres. It is zoned for commercial use with off site retention and utilities in place. With over 2,000 residential homes under construction or planned within a mile radius, this property is poised for enviable growth.

The adjacent 1.82 acre outparcel is currently under contract.

## LOCATION DESCRIPTION

The outparcel is located within The Shoppes of Dade City at the northeast corner of US 301 and Clinton Avenue in Dade City. It is accessible from both US Highway 301 and Clinton Avenue.

## MUNICIPALITY

Dade City

## PROPERTY SIZE

1.82 Acres & 2.17 Acres

## ZONING

CH - Commercial Highway

## PARCEL ID

11-25-21-0050-00400-0000 & 11-25-21-0050-00200-0000

## PRICE

1.82 Acres - \$1,785,000

2.17 Acres - \$2,125,000

## BROKER CONTACT INFO

**J. Michael Strahan, ALC, CCIM, MAB**

Senior Advisor/Partner

813.287.8787 x105

[michael@thedirtdog.com](mailto:michael@thedirtdog.com)

**Chris Bowers ALC, CCIM**

Senior Advisor/Partner

813.287.8787 x108

[chris@thedirtdog.com](mailto:chris@thedirtdog.com)



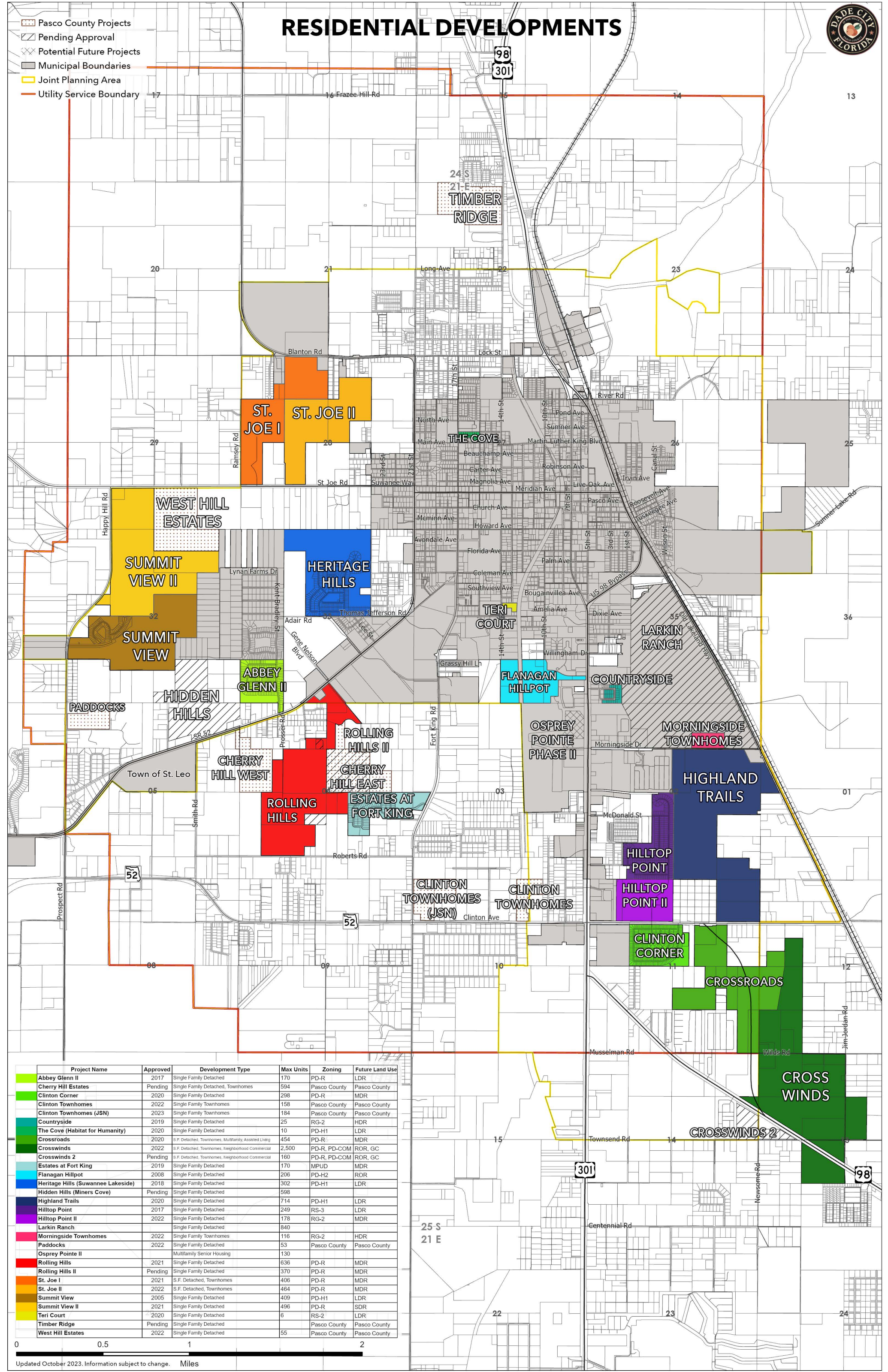




# Aerial

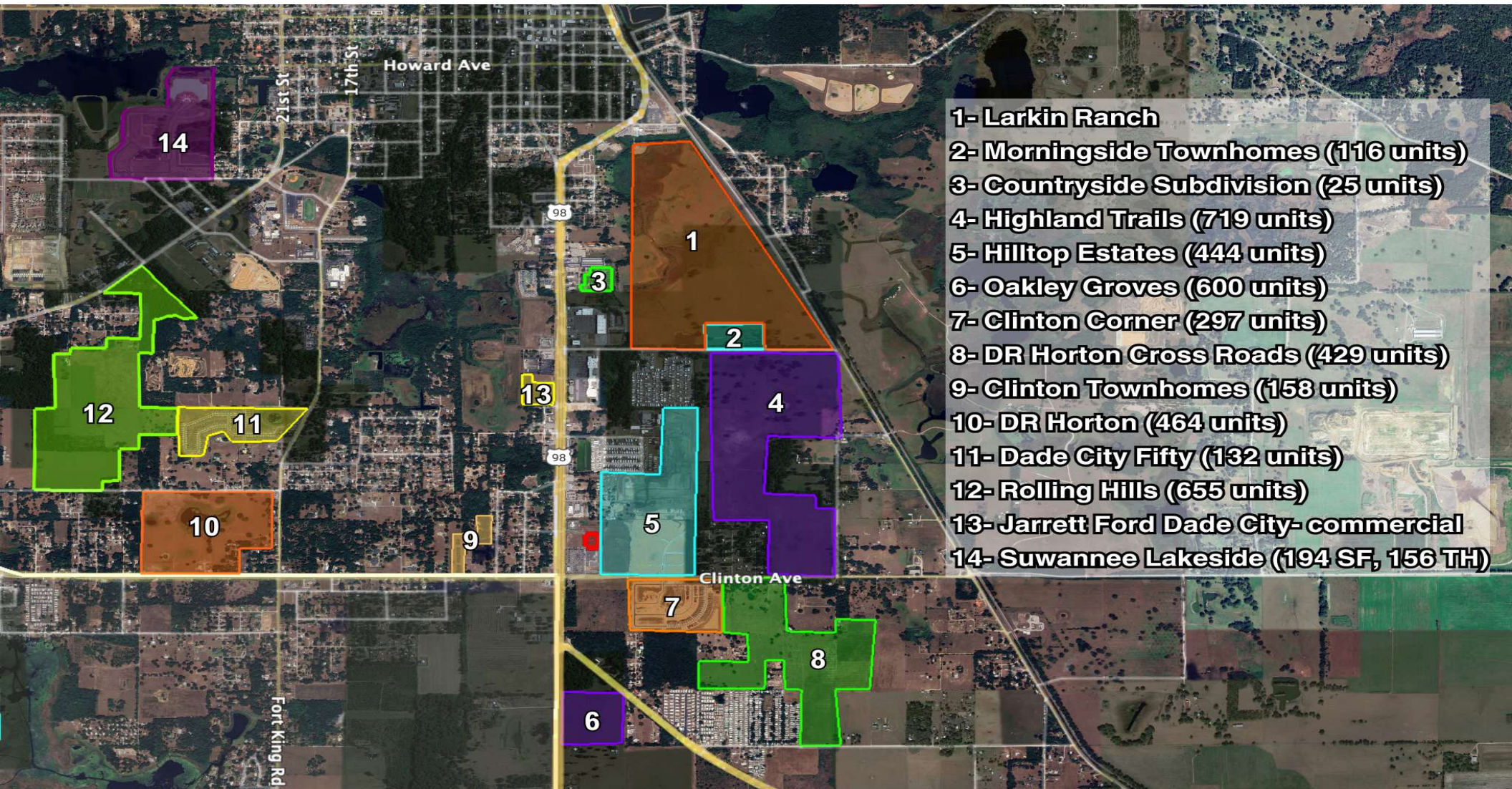








# Map of Residential Development





# Demographics - 1 Mile Radius

## KEY FACTS

2,159

Population



2.1

Average Household Size

57.9

Median Age

\$46,014

Median Household Income

## INCOME



\$46,014

Median Household Income



\$26,374

Per Capita Income



\$161,891

Median Net Worth

## BUSINESS



112

Total Businesses



1,375

Total Employees

## EMPLOYMENT



60%

White Collar



23%

Blue Collar

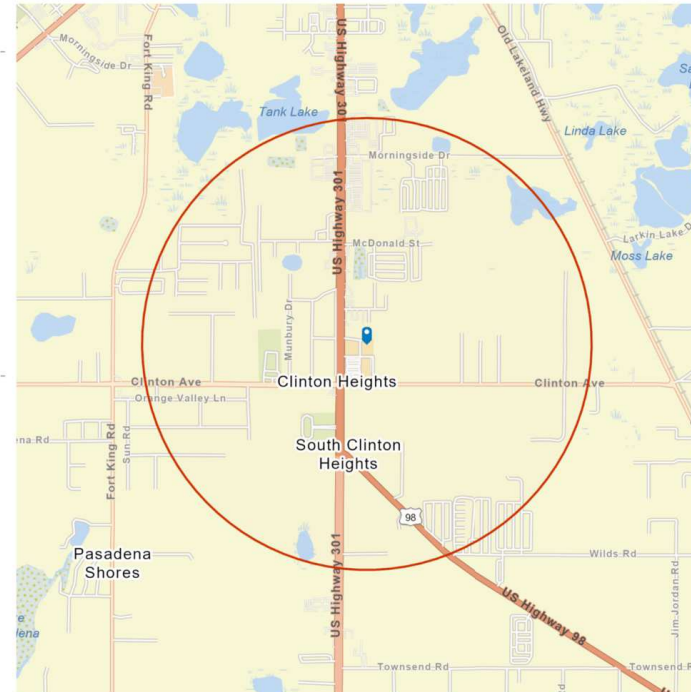


17%

Services

5.3%

Unemployment Rate



# Demographics - 3 Mile Radius

## KEY FACTS

15,468

Population



2.5

Average Household Size

45.4

Median Age

\$51,184

Median Household Income

## INCOME



\$51,184

Median Household Income



\$24,968

Per Capita Income



\$112,145

Median Net Worth

## BUSINESS



769

Total Businesses



8,022

Total Employees

## EMPLOYMENT



59%

White Collar



26%

Blue Collar

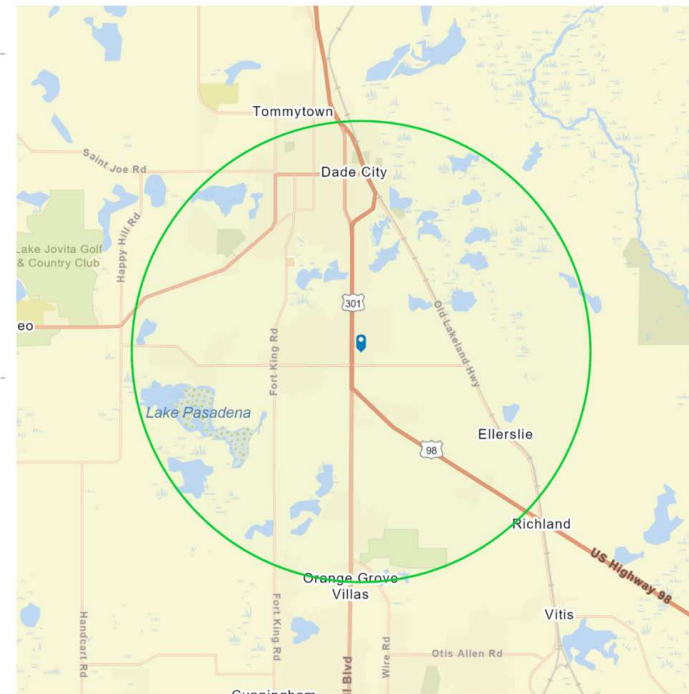


15%

Services

3.9%

Unemployment Rate





# Demographics - 5 Mile Radius

## KEY FACTS

32,165

Population



2.6

Average Household Size

45.8

Median Age

\$50,981

Median Household Income

## INCOME



\$50,981

Median Household Income



\$25,802

Per Capita Income



\$130,122

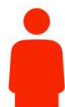
Median Net Worth

## BUSINESS



1,247

Total Businesses



13,907

Total Employees

## EMPLOYMENT



58%

White Collar



27%

Blue Collar

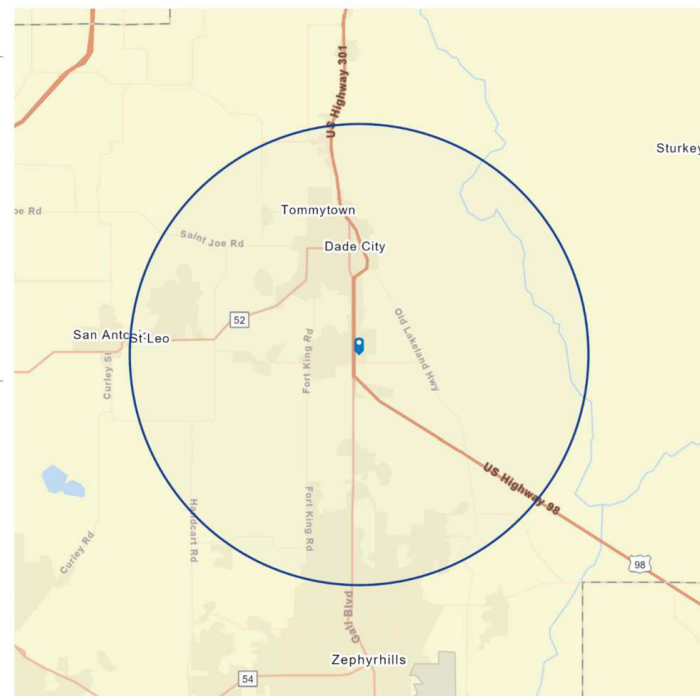


16%

Services

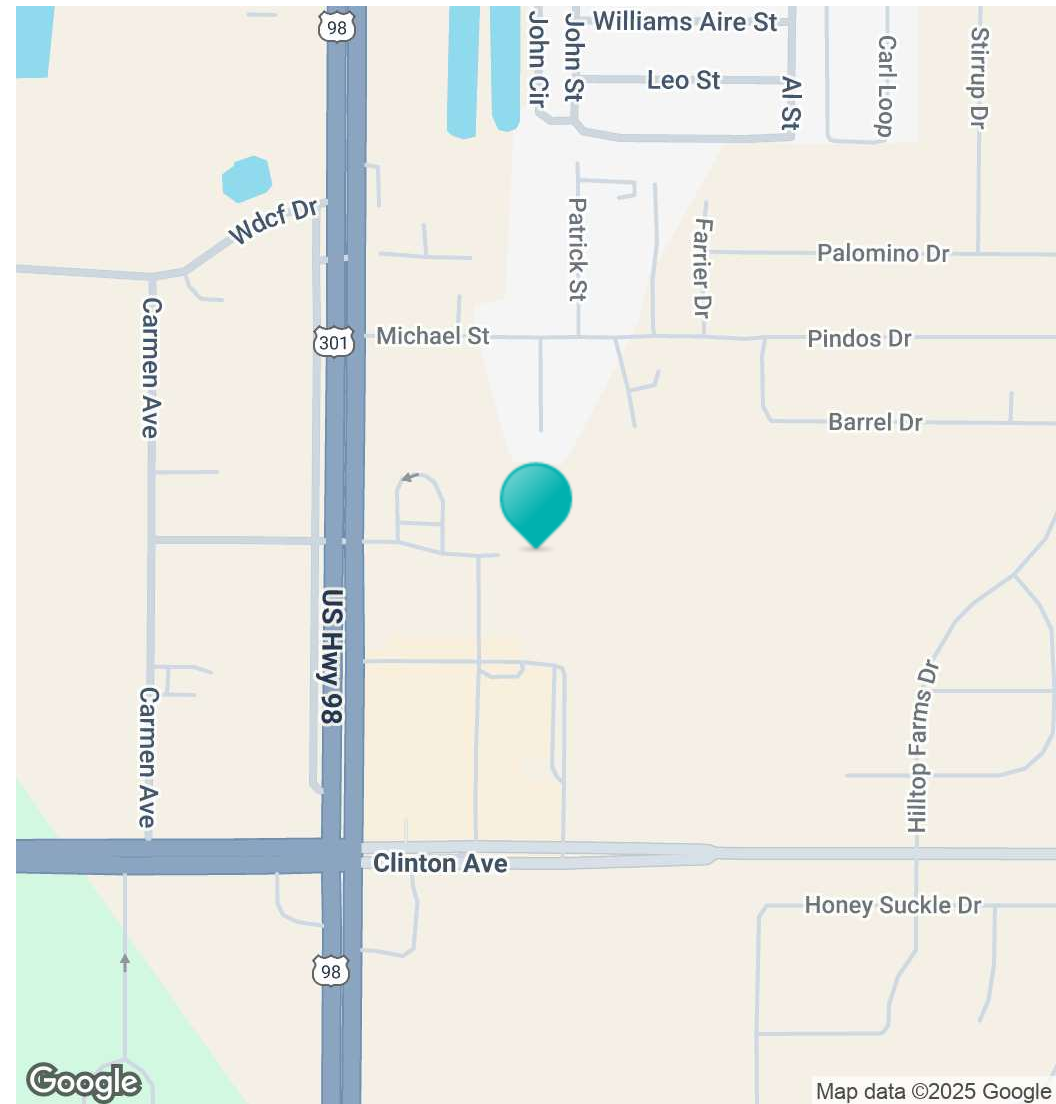
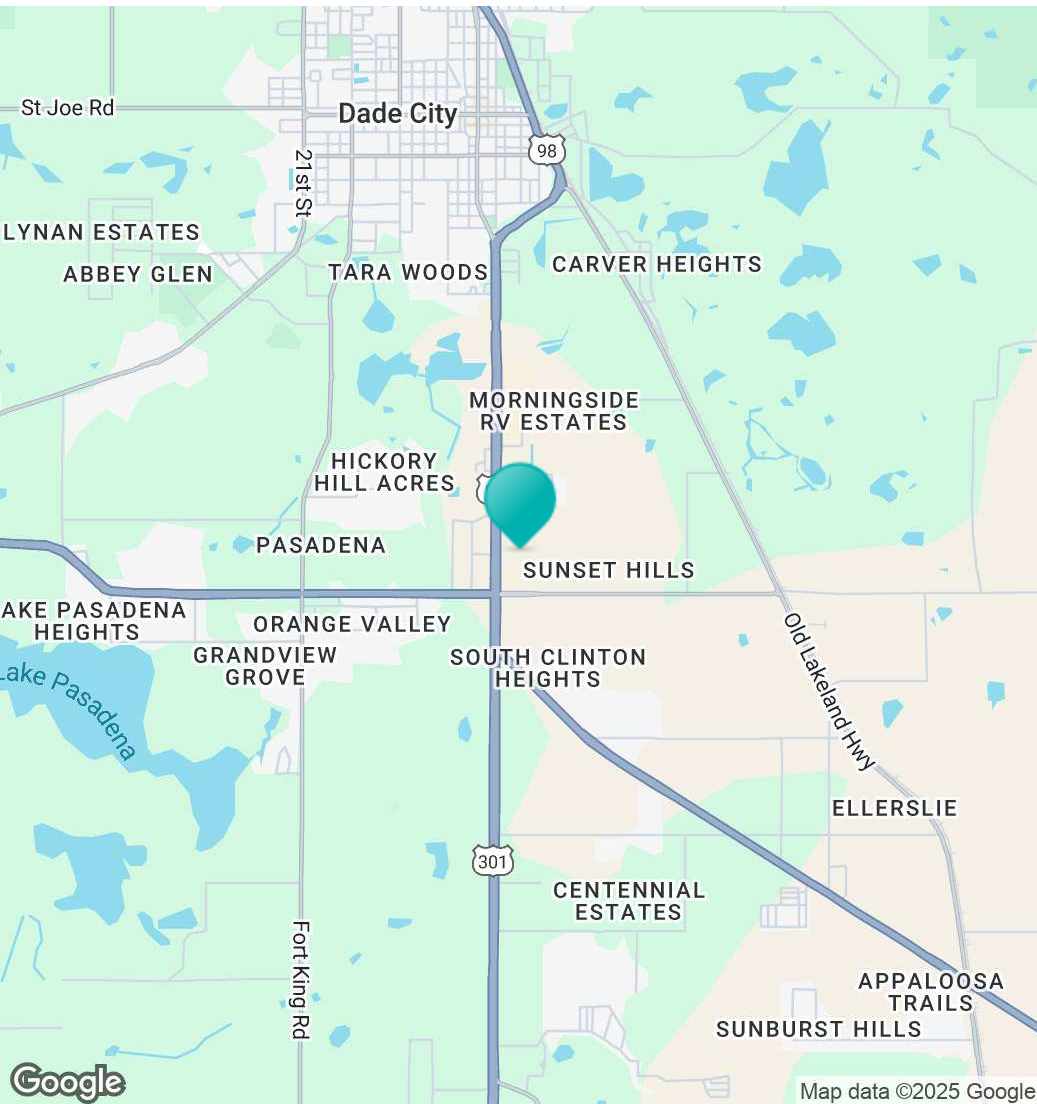
4.2%

Unemployment Rate





# Location Maps





# Confidentiality & Disclaimer

All materials and information received or derived from Eshenbaugh Land Company, LLC its directors, officers, agents, advisors, affiliates and/or any third party sources are provided without representation or warranty as to completeness, veracity, or accuracy, condition of the property, compliance or lack of compliance with applicable governmental requirements, developability or suitability, financial performance of the property, projected financial performance of the property for any party's intended use or any and all other matters.

Neither Eshenbaugh Land Company, LLC its directors, officers, agents, advisors, or affiliates makes any representation or warranty, express or implied, as to accuracy or completeness of the any materials or information provided, derived, or received. Materials and information from any source, whether written or verbal, that may be furnished for review are not a substitute for a party's active conduct of its own due diligence to determine these and other matters of significance to such party. Eshenbaugh Land Company, LLC will not investigate or verify any such matters or conduct due diligence for a party unless otherwise agreed in writing.

EACH PARTY SHALL CONDUCT ITS OWN INDEPENDENT INVESTIGATION AND DUE DILIGENCE.

Any party contemplating or under contract or in escrow for a transaction is urged to verify all information and to conduct their own inspections and investigations including through appropriate third party independent professionals selected by such party. All financial data should be verified by the party including by obtaining and reading applicable documents and reports and consulting appropriate independent professionals. Eshenbaugh Land Company, LLC makes no warranties and/or representations

regarding the veracity, completeness, or relevance of any financial data or assumptions. Eshenbaugh Land Company, LLC does not serve as a financial advisor to any party regarding any proposed transaction. All data and assumptions regarding financial performance, including that used for financial modeling purposes, may differ from actual data or performance. Any estimates of market rents and/or projected rents that may be provided to a party do not necessarily mean that rents can be established at or increased to that level. Parties must evaluate any applicable contractual and governmental limitations as well as market conditions, vacancy factors and other issues in order to determine rents from or for the property.

Legal questions should be discussed by the party with an attorney. Tax questions should be discussed by the party with a certified public accountant or tax attorney. Title questions should be discussed by the party with a title officer or attorney. Questions regarding the condition of the property and whether the property complies with applicable governmental requirements should be discussed by the party with appropriate engineers, architects, contractors, other consultants and governmental agencies. All properties and services are marketed by Eshenbaugh Land Company, LLC in compliance with all applicable fair housing and equal opportunity laws.

Eshenbaugh Land Company is a licensed real estate brokerage firm in Florida and William A. Eshenbaugh is the broker of record.