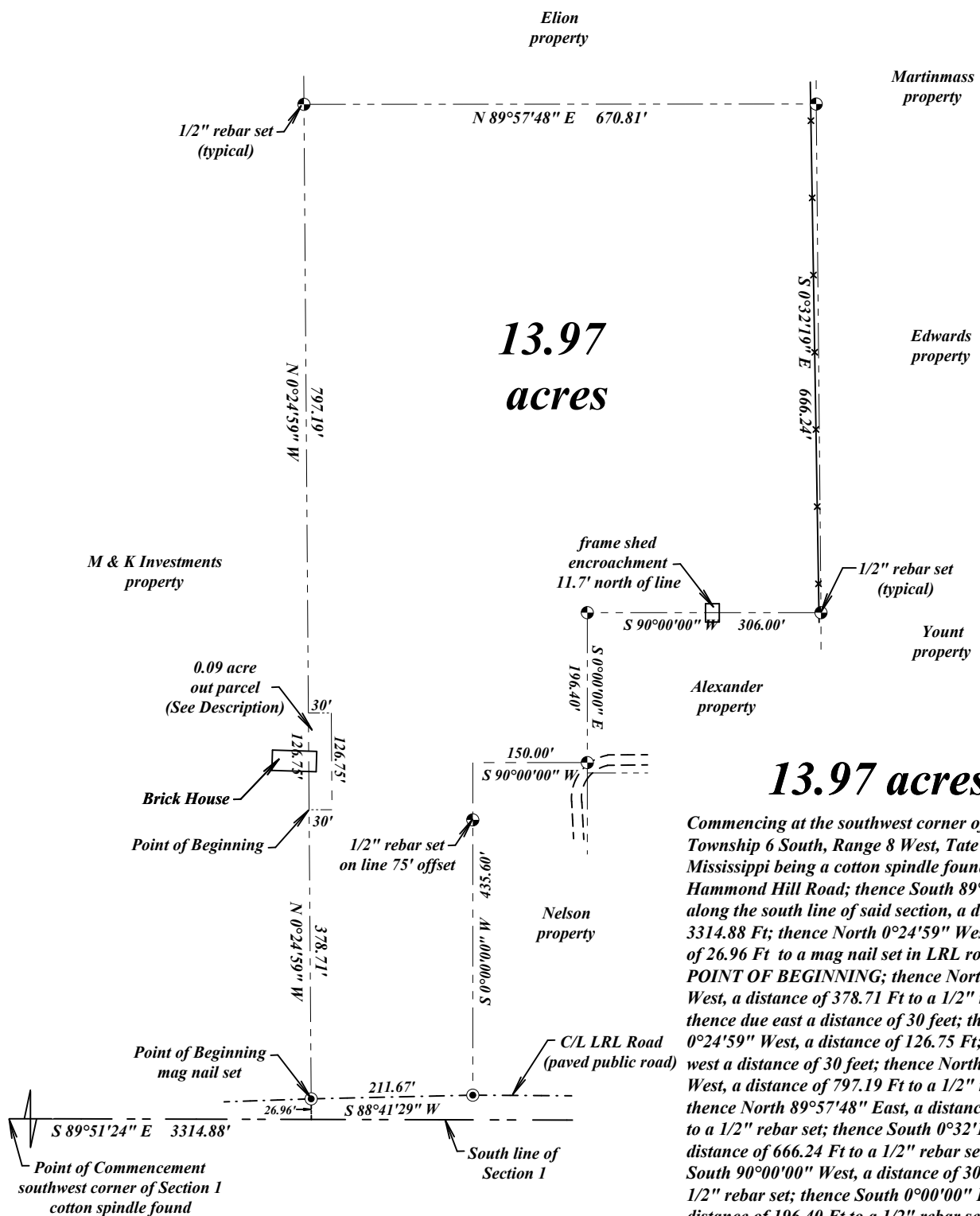


Part of the Southeast Quarter of
Section 1, Township 6 South, Range 8 West,
Tate County, Mississippi
13.97 acres



13.97 acres

Commencing at the southwest corner of Section 1, Township 6 South, Range 8 West, Tate County, Mississippi being a cotton spindle found in Hammond Hill Road; thence South 89°51'24" East along the south line of said section, a distance of 3314.88 Ft; thence North 0°24'59" West, a distance of 26.96 Ft to a mag nail set in LRL road being the POINT OF BEGINNING; thence North 0°24'59" West, a distance of 378.71 Ft to a 1/2" rebar set thence due east a distance of 30 feet; thence North 0°24'59" West, a distance of 126.75 Ft; thence due west a distance of 30 feet; thence North 0°24'59" West, a distance of 797.19 Ft to a 1/2" rebar set; thence North 89°57'48" East, a distance of 670.81 Ft to a 1/2" rebar set; thence South 0°32'19" East, a distance of 666.24 Ft to a 1/2" rebar set; thence South 90°00'00" West, a distance of 306.00 Ft to a 1/2" rebar set; thence South 0°00'00" East, a distance of 196.40 Ft to a 1/2" rebar set; thence South 90°00'00" West, a distance of 150.00 Ft; thence South 0°00'00" West passing through a 1/2" rebar set on line @ 75', a total distance of 435.60 Ft to a mag nail set in said centerline; thence South 88°41'29" West along said road, a distance of 211.67 Ft to the POINT OF BEGINNING; said described tract containing 13.97 Acres, more or less.

0.09 acres

Commencing at the southwest corner of Section 1, Township 6 South, Range 8 West, Tate County, Mississippi being a cotton spindle found in Hammond Hill Road; thence South 89°51'24" East along the south line of said section, a distance of 3314.88 Ft; thence North 0°24'59" West, a distance of 26.96 Ft to a mag nail set in LRL road being the POINT OF BEGINNING; thence North 0°24'59" West, a distance of 378.71 Ft to a 1/2" rebar set being the Point of Beginning: thence due east a distance of 30 feet; thence North 0°24'59" West, a distance of 126.75 Ft; thence due west a distance of 30 feet; thence South 0°24'59" East, a distance of 126.75 to the Point of Beginning being 0.09 acres

Scale 1"=200', March 27, 2025
Class "B" Survey

- Notes:
1. 1/2" rebar set on all corners unless otherwise noted
 2. This survey is subject to all easements and rights of way of record
 3. Bearings are referenced to MS State Plane (MS West) GPS Grid

Hensley Land Surveying
2449 Arkabutla Road
Coldwater, MS 38618
662-562-5055/901-652-0129
mikehensley98@gmail.com