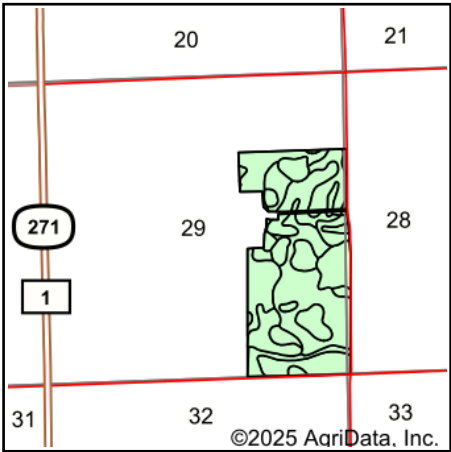
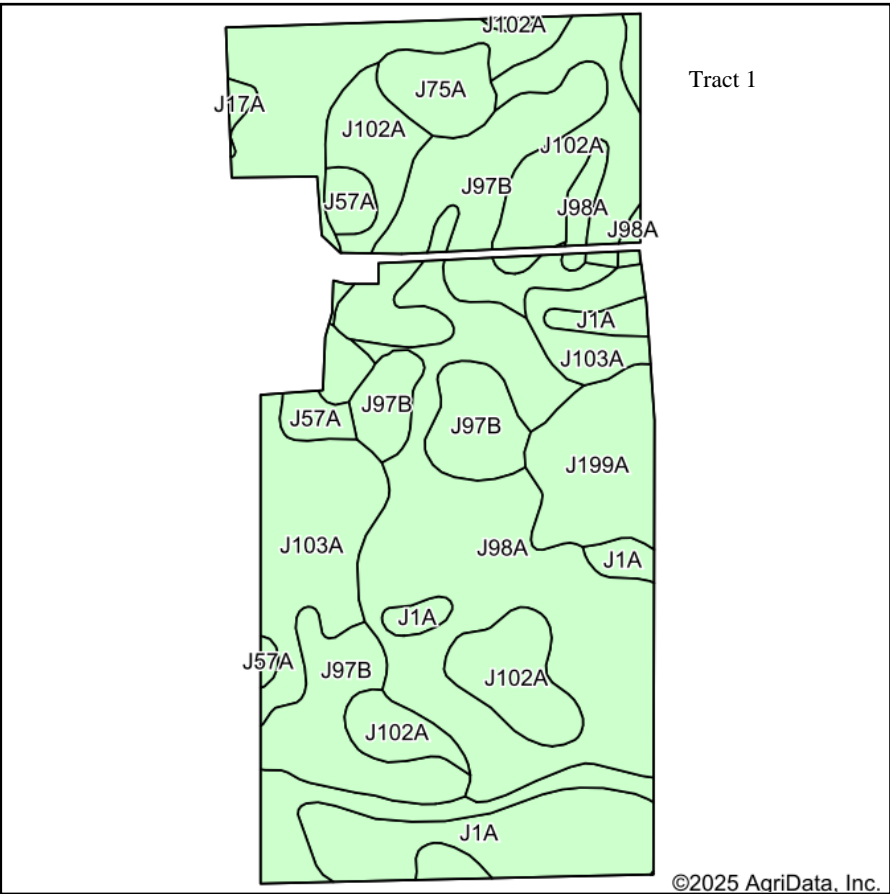


Soils Map



State: **Minnesota**
County: **Lincoln**
Location: **29-112N-46W**
Township: **Hendricks**
Acres: **155.38**
Date: **4/18/2025**

**BURLAGE
PETERSON**

Auctioneers & Realtors, LLC

Maps Provided By:



surety®
CUSTOMIZED ONLINE MAPPING

© AgriData, Inc. 2023

www.AgriDataInc.com



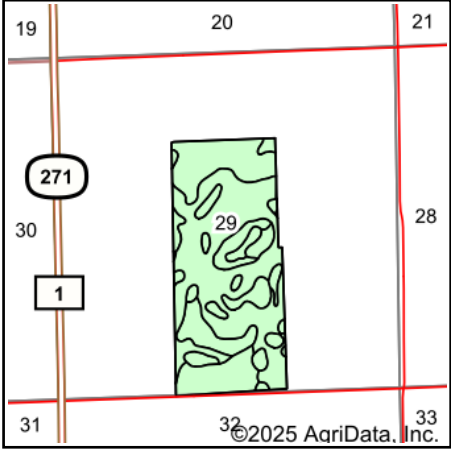
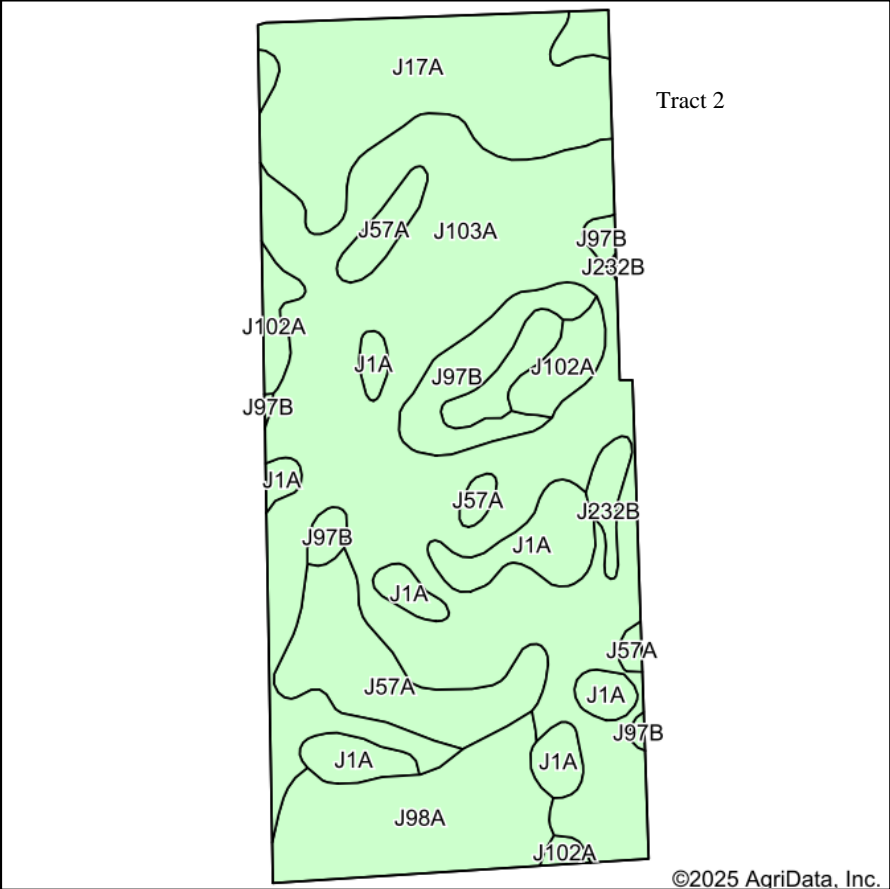
Soils data provided by USDA and NRCS.

©2025 AgriData, Inc.

Area Symbol: MN081, Soil Area Version: 23						
Code	Soil Description	Acres	Percent of field	Non-Irr Class	Productivity Index	*n NCCPI Overall
J98A	Parnell silty clay loam, 0 to 2 percent slopes	36.37	23.3%	IIw	93	65
J103A	Winger silty clay loam, 0 to 2 percent slopes	35.55	22.9%	IIw	90	75
J97B	Singsaas-Oak Lake complex, 1 to 6 percent slopes	29.45	19.0%	IIe	97	66
J102A	Oak Lake silty clay loam, 1 to 3 percent slopes	22.72	14.6%	Ie	99	70
J1A	Parnell silty clay loam, depressional, 0 to 1 percent slopes	14.43	9.3%	IIIw	86	62
J199A	Fulda silty clay, 0 to 2 percent slopes	9.11	5.9%	IIw	86	54
J75A	Fordville loam, coteau, 0 to 2 percent slopes	4.04	2.6%	IIs	64	54
J57A	Balaton loam, 1 to 3 percent slopes	3.23	2.1%	IIs	96	70
J17A	Quam silty clay loam, depressional, 0 to 1 percent slopes	0.48	0.3%	IIIw	88	71
Weighted Average				1.95	92.2	*n 67.1

*n: The aggregation method is "Weighted Average using all components"

Soils Map



State: **Minnesota**
County: **Lincoln**
Location: **29-112N-46W**
Township: **Hendricks**
Acres: **150.4**
Date: **4/18/2025**

**BURLAGE
PETERSON**

Auctioneers & Realtors, LLC

Maps Provided By:



Soils data provided by USDA and NRCS.

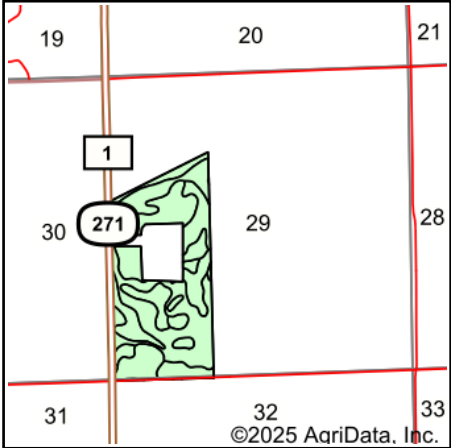
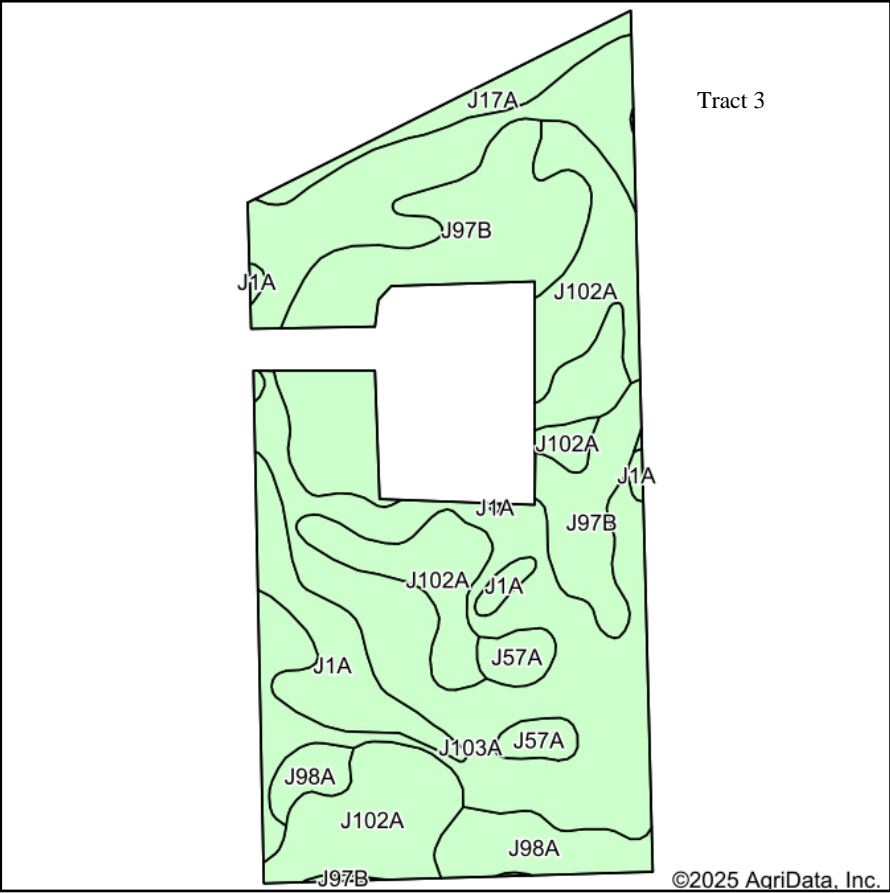
©2025 AgriData, Inc.

Area Symbol: MN081, Soil Area Version: 23

Code	Soil Description	Acres	Percent of field	Non-Irr Class	Productivity Index	*n NCCPI Overall
J103A	Winger silty clay loam, 0 to 2 percent slopes	72.75	48.4%	IIw	90	75
J17A	Quam silty clay loam, depressionnal, 0 to 1 percent slopes	22.42	14.9%	IIlw	88	71
J98A	Parnell silty clay loam, 0 to 2 percent slopes	14.42	9.6%	IIw	93	65
J57A	Balaton loam, 1 to 3 percent slopes	13.04	8.7%	IIIs	96	70
J1A	Parnell silty clay loam, depressionnal, 0 to 1 percent slopes	11.57	7.7%	IIlw	86	62
J97B	Singsaas-Oak Lake complex, 1 to 6 percent slopes	7.37	4.9%	IIe	97	66
J102A	Oak Lake silty clay loam, 1 to 3 percent slopes	4.85	3.2%	Ie	99	70
J232B	Barnes, occasional saturation-Buse-Arvilla complex, 2 to 6 percent slopes	3.98	2.6%	IIIe	74	58
Weighted Average				2.22	90.4	*n 71

*n: The aggregation method is "Weighted Average using all components"

Soils Map



State: **Minnesota**
County: **Lincoln**
Location: **29-112N-46W**
Township: **Hendricks**
Acres: **125.12**
Date: **4/18/2025**

**BURLAGE
PETERSON**
Auctioneers & Realtors, LLC

Maps Provided By:



Soils data provided by USDA and NRCS.

Area Symbol: MN081, Soil Area Version: 23						
Code	Soil Description	Acres	Percent of field	Non-Irr Class	Productivity Index	*n NCCPI Overall
J103A	Winger silty clay loam, 0 to 2 percent slopes	51.76	41.4%	IIw	90	75
J97B	Singsaas-Oak Lake complex, 1 to 6 percent slopes	25.43	20.3%	Ile	97	66
J102A	Oak Lake silty clay loam, 1 to 3 percent slopes	24.28	19.4%	Ie	99	70
J1A	Parnell silty clay loam, depressional, 0 to 1 percent slopes	9.14	7.3%	IIIw	86	62
J98A	Parnell silty clay loam, 0 to 2 percent slopes	7.33	5.9%	IIw	93	65
J17A	Quam silty clay loam, depressional, 0 to 1 percent slopes	4.04	3.2%	IIIw	88	71
J57A	Balaton loam, 1 to 3 percent slopes	3.14	2.5%	IIs	96	70
Weighted Average				1.91	93.1	*n 70.4

*n: The aggregation method is "Weighted Average using all components"