



11.322 ACRES OF LAND FOR SALE IN GRAYSON COUNTY, TEXAS



FOR SALE



1021 ROCKPORT RD.,
SHERMAN, TX 75092



CONTACT
THOMAS
JOHNSTON

512-970-1610

HIGHLIGHTS

The Real Estate Ranch

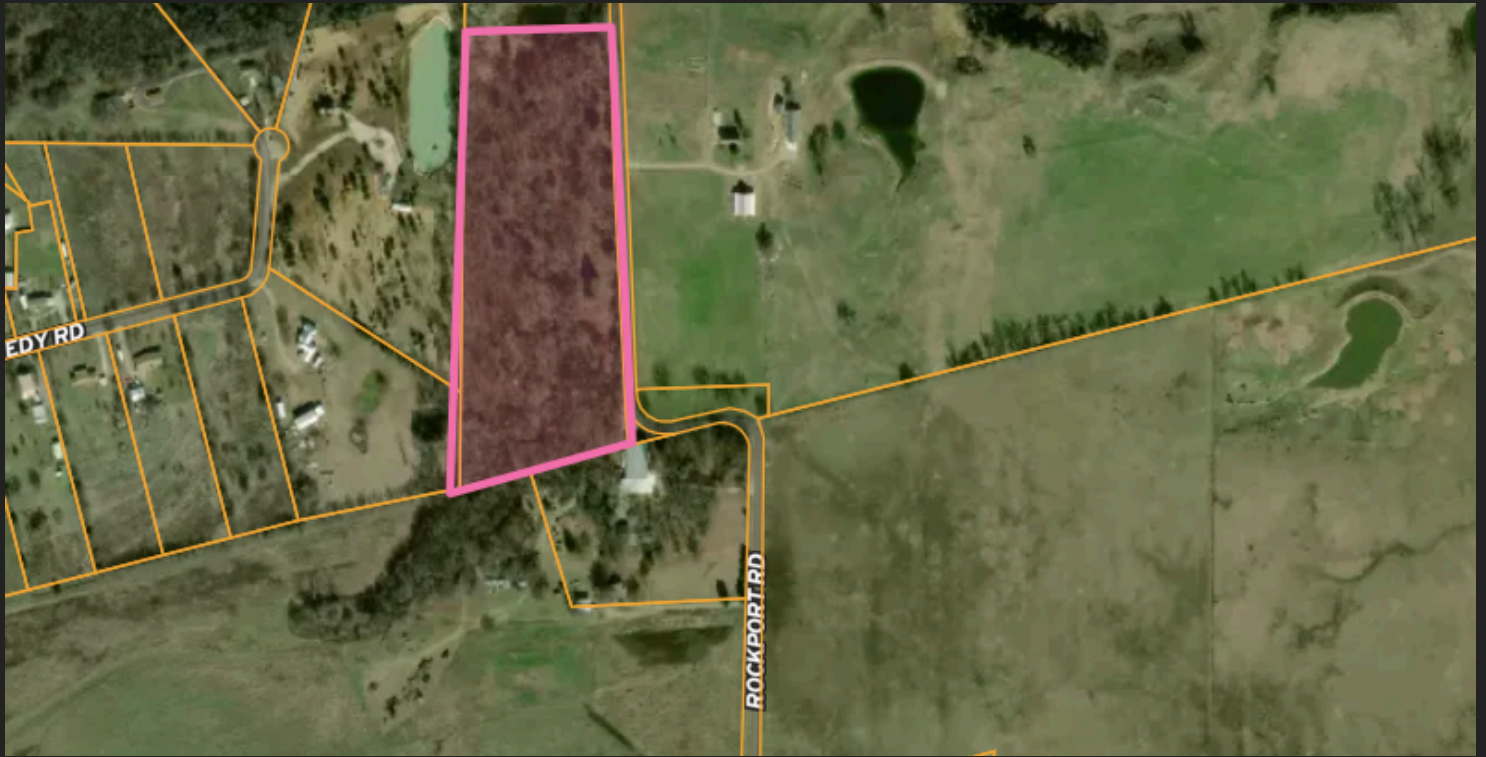
- 11.322 ACRES OF LAND
- UNRESTRICTED LAND
- CAN BE SUBDIVIDED
- BUILD YOUR DREAM HOME
- POTENTIAL RV PARK
- POTENTIAL TINY HOME,
- QUADPLEXES.
- PRIME LOCATION



Description



11.22 acres situated between Gunter & Sherman with Approx 950' Paved Frontage Rockport Road makes it easily subdivided. Unpainted Canvas to Build the Home of your Dream, Recently all underbrush has been cleared with Great Mature Hardwood Trees as well as wet weather Mormon Grove Creek on the back side of Property. Unrestricted and on Doerchester water so may be Great Investment, RV park, apartment, duplex, Tiny Homes, or Quadplexes. 18 miles North of Celina, 9.5 Miles From Gunter, 1.75 miles from Preston Rd FM 289, 5 miles to Sherman, 16.5 miles to Lake Texoma & Oklahoma Border.



**DIRECTIONS: FROM PRESTON MEADOWS
ROAD TURN RIGHT ON ROCKPORT ROAD.
GO .3 MILES AND THE PROPERTY IS ON
YOUR RIGHT.**

Photos

The Real Estate Ranch



Photos

The Real Estate Ranch



Photos

the Real Estate
Ranch



Photos

The Real Estate Ranch



the Real Estate Ranch

**1021 Rockport Road,
Sherman, TX 75092**



**Presented By
Thomas Johnston
432-934-3333 OR 512-970-1610
THE REAL ESTATE RANCH
432-688-8200**