

**TBD HWY 61, HANKAMER 77560**  
CHAMBERS COUNTY  
**16± ACRES | \$995,000**







## PROPERTY DESCRIPTION.

Just over 16 unrestricted acres located just 0.3 miles south of I-10 on Hwy 61 in Hankamer. With over 500 feet of highway frontage and public water access, this tract offers excellent visibility and accessibility for a variety of uses. The property is densely wooded, providing privacy and flexibility for development.

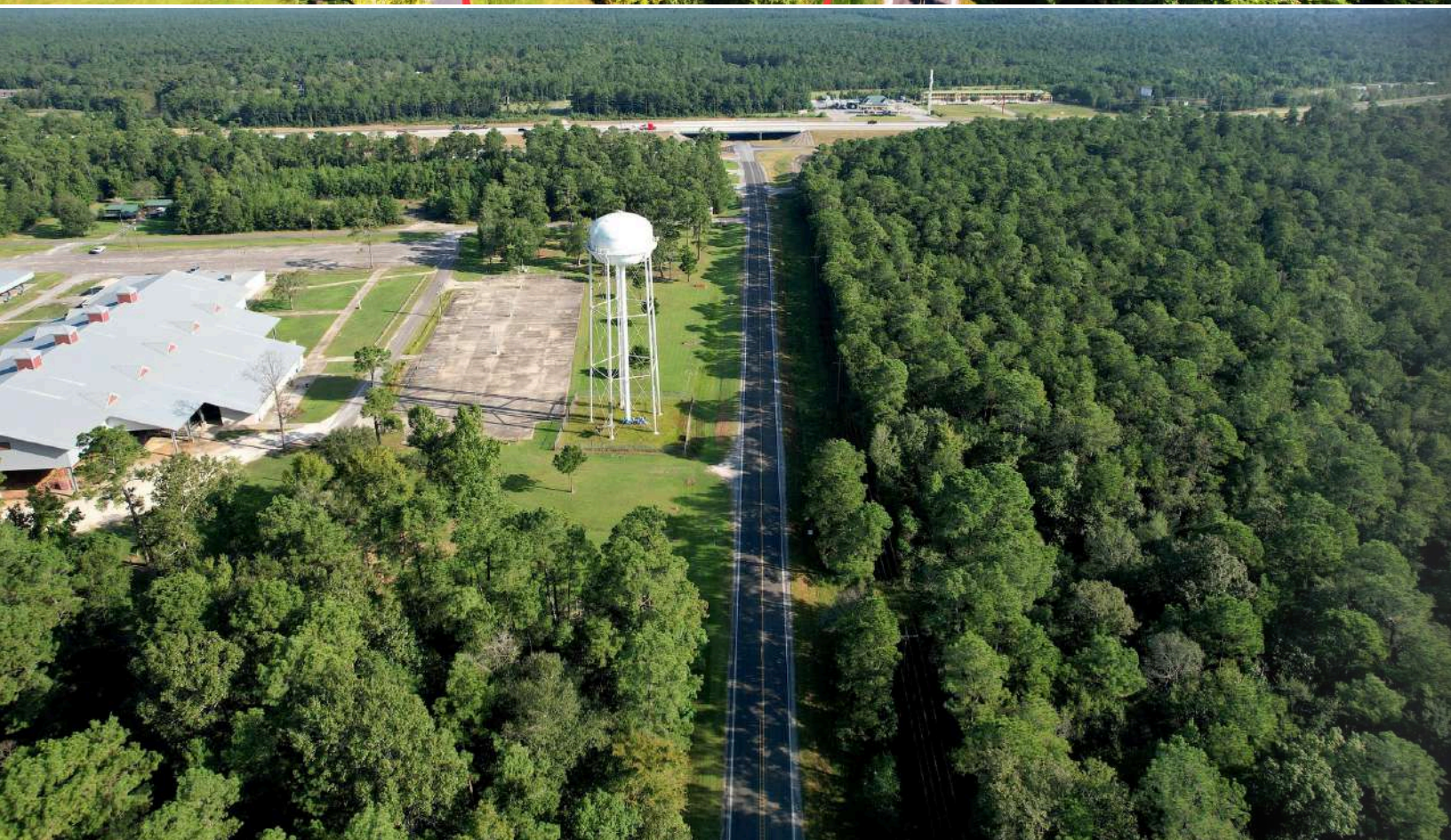
THE INFORMATION PROVIDED HEREIN IS BELIEVED TO BE ACCURATE BUT IS NOT GUARANTEED BY ANDRUS LAND GROUP. DETAILS ARE SUBJECT TO CHANGE AT ANY TIME WITHOUT NOTICE.





## PROPERTY FEATURES

Over 500' of Highway Frontage, Public Water Access, Densely Wooded, Unrestricted Use, Ideal for Commercial or Mixed-Use Development, Borders White's Park Event Arena, Outside City Limits, High-Visibility Location

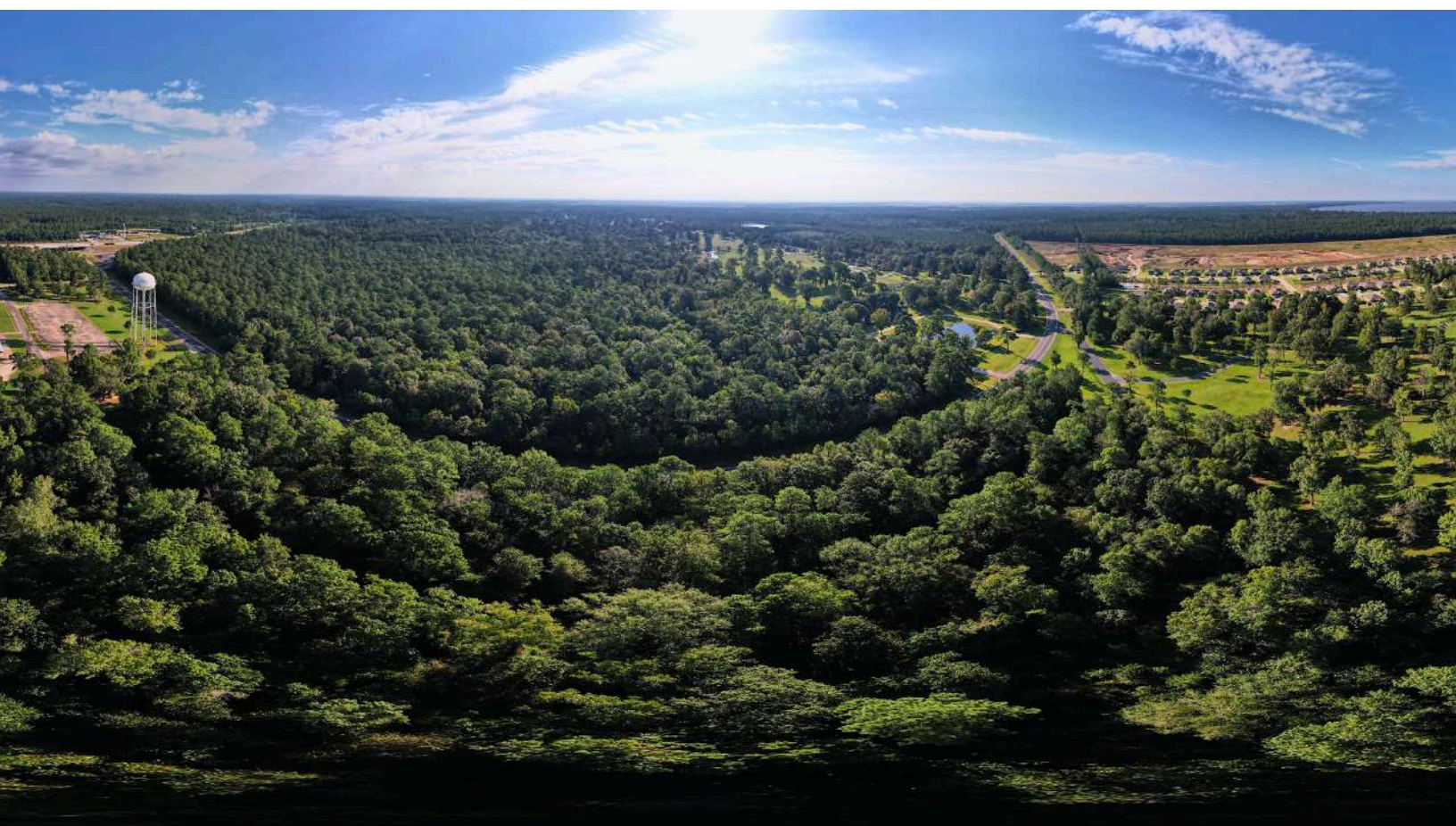


THE INFORMATION PROVIDED HEREIN IS BELIEVED TO BE ACCURATE BUT IS NOT GUARANTEED BY ANDRUS LAND GROUP. DETAILS ARE SUBJECT TO CHANGE AT ANY TIME WITHOUT NOTICE.

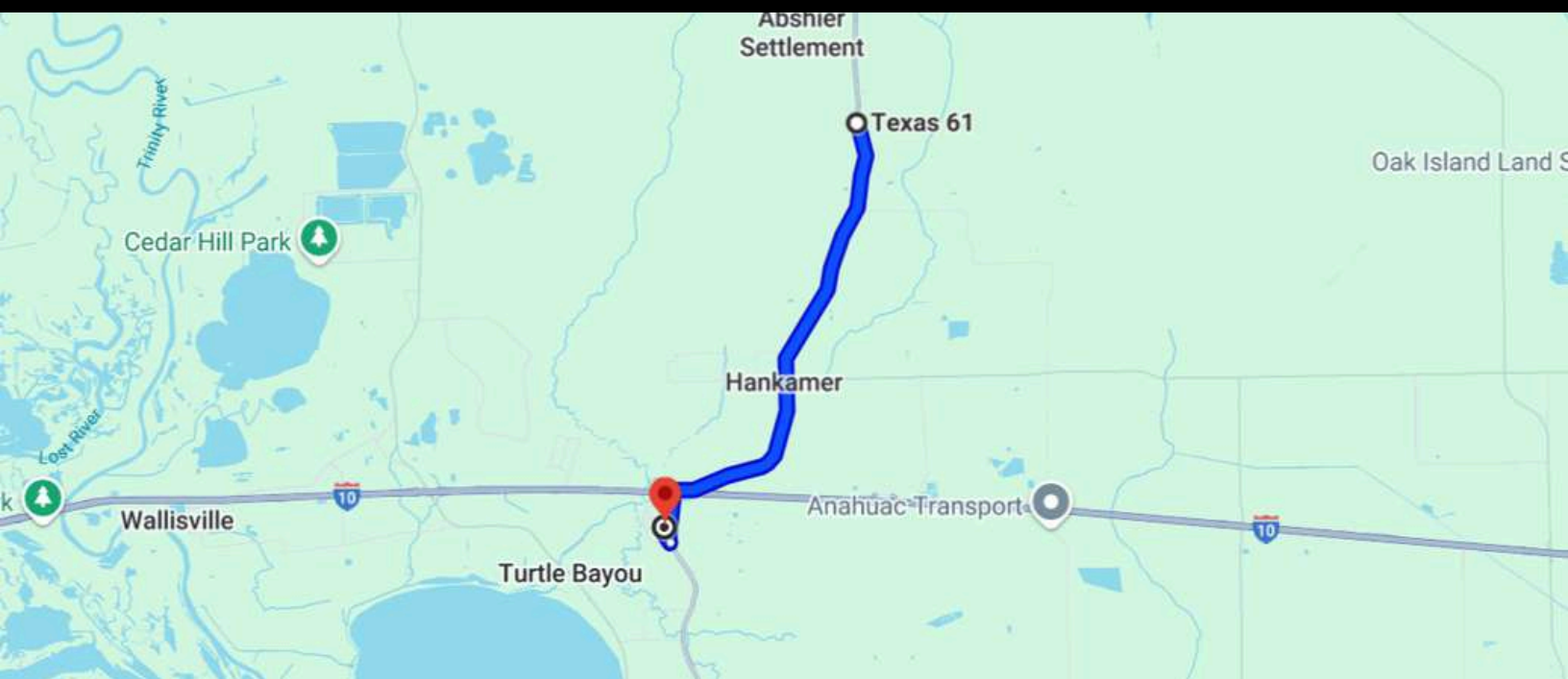


# TBD HWY 61, HANKAMER 77560

## CHAMBERS COUNTY







## NAVIGATION DIRECTIONS

### From I-10/Hwy 61:

From I-10/Hwy 61, Travel South for .3 miles. Property will be on right.



## CHAD ANDRUS, ALC ACCREDITED LAND CONSULTANT

chad@andruslandgroup.com

832-402-9211

www.andruslandgroup.com



ALL MATERIALS AND INFORMATION RECEIVED OR DERIVED FROM ANDRUS LAND GROUP AND ITS DIRECTORS, OFFICERS, AGENTS, ADVISORS, AFFILIATES AND/OR ANY THIRD PARTY SOURCES ARE PROVIDED WITHOUT REPRESENTATION OR WARRANTY AS TO COMPLETENESS, VERACITY, OR ACCURACY, CONDITION OF THE PROPERTY, COMPLIANCE OR LACK OF COMPLIANCE WITH APPLICABLE GOVERNMENTAL REQUIREMENTS, DEVELOPABILITY OR SUITABILITY, FINANCIAL PERFORMANCE OF THE PROPERTY, PROJECTED FINANCIAL PERFORMANCE OF THE PROPERTY FOR ANY PARTY'S INTENDED USE OR ANY AND ALL OTHER MATTERS. NEITHER ANDRUS LAND GROUP, ITS DIRECTORS, OFFICERS, AGENTS, ADVISORS, OR AFFILIATES MAKES ANY REPRESENTATION OR WARRANTY, EXPRESS OR IMPLIED, AS TO ACCURACY OR COMPLETENESS OF THE MATERIALS OR INFORMATION PROVIDED, DERIVED, OR RECEIVED. MATERIALS AND INFORMATION FROM ANY SOURCE, WHETHER WRITTEN OR VERBAL, THAT MAY BE FURNISHED FOR REVIEW ARE NOT A SUBSTITUTE FOR A PARTY'S ACTIVE CONDUCT OF ITS OWN DUE DILIGENCE TO DETERMINE THESE AND OTHER MATTERS OF SIGNIFICANCE TO SUCH PARTY. ANDRUS LAND GROUP WILL NOT INVESTIGATE OR VERIFY ANY SUCH MATTERS OR CONDUCT DUE DILIGENCE FOR A PARTY UNLESS OTHERWISE AGREED IN WRITING. EACH PARTY SHALL CONDUCT ITS OWN INDEPENDENT INVESTIGATION AND DUE DILIGENCE.

# Ranch. financing made simple



**WINNIE OFFICE**

NMLS493828 | 409.400.4066 | capitalfarmcredit.com



**Anthony Vaughan**