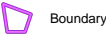
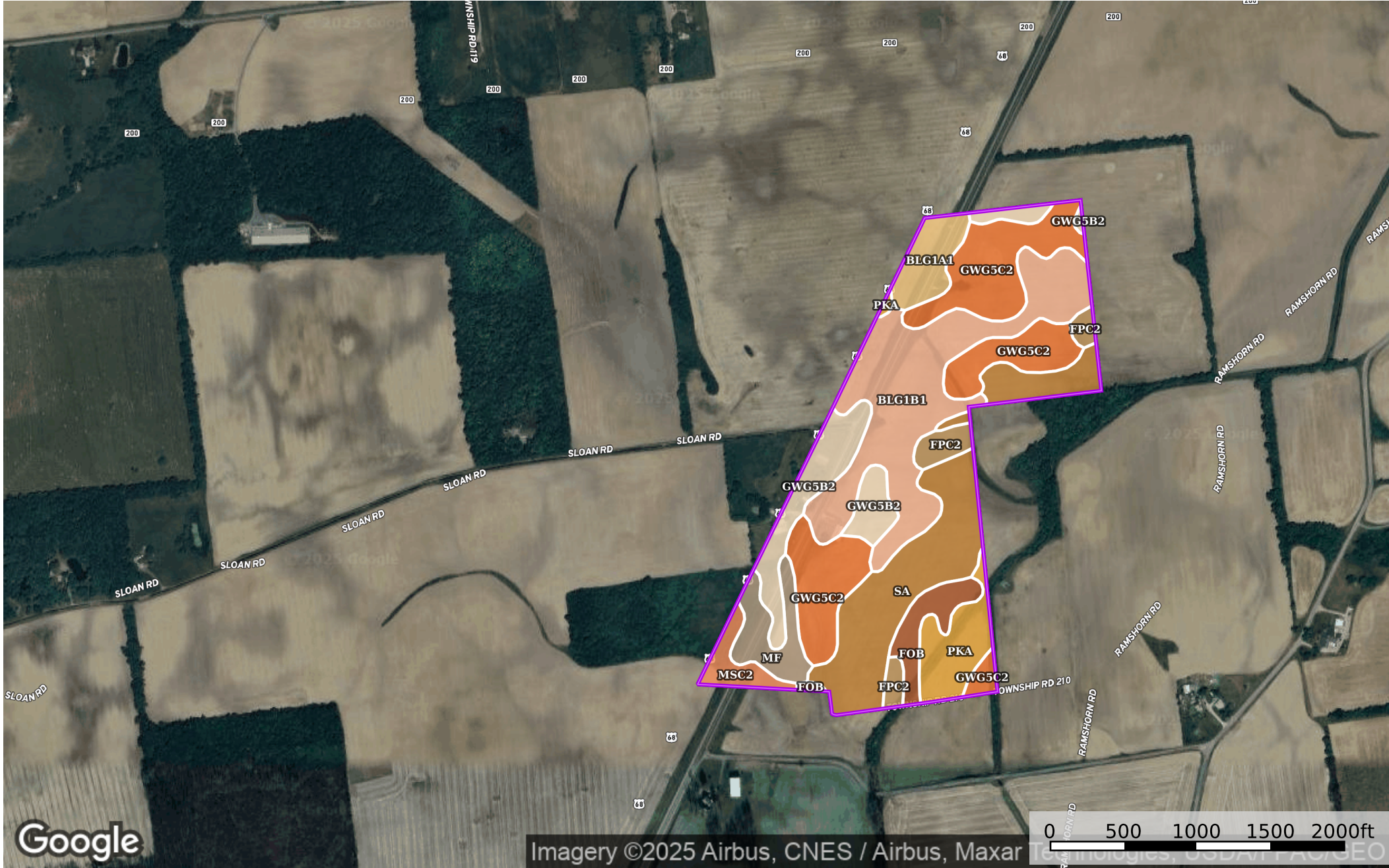


106 Acres Hardin County McCullough  
Hardin County, Ohio, 106 AC +/-



Boundary



|  Boundary 111.43 ac

SOIL CODE	SOIL DESCRIPTION	ACRES	%	CPI	NCCPI	CAP
Blg1B1	Blount silt loam, ground moraine, 2 to 4 percent slopes	27.04	24.26	0	67	2e
Gwg5C2	Glynwood clay loam, ground moraine, 6 to 12 percent slopes, eroded	24.77	22.23	65	56	3e
Sa	Saranac silty clay loam, 0 to 2 percent slopes, frequently flooded	21.62	19.4	0	84	3w
Gwg5B2	Glynwood clay loam, ground moraine, 2 to 6 percent slopes, eroded	11.03	9.9	0	56	2e
PkA	Pewamo silty clay loam, 0 to 1 percent slopes	6.3	5.65	0	76	2w
Mf	Milford silty clay loam, 0 to 2 percent slopes	5.25	4.71	0	86	2w
Blg1A1	Blount silt loam, ground moraine, 0 to 2 percent slopes	4.67	4.19	0	69	2w
FoB	Fox silt loam, till plain, 2 to 6 percent slopes	4.33	3.89	0	66	2e
FpC2	Fox clay loam, 6 to 12 percent slopes, eroded	3.59	3.22	0	50	3e
MsC2	Morley-Belmore complex, 6 to 15 percent slopes, eroded	2.83	2.54	0	61	4e
TOTALS		111.43(*)	100%	14.45	67.5	2.5









(\*) Total acres may differ in the second decimal compared to the sum of each acreage soil. This is due to a round error because we only show the acres of each soil with two decimal.

## Capability Legend

Increased Limitations and Hazards

Decreased Adaptability and Freedom of Choice Users

Land, Capability

								
	1	2	3	4	5	6	7	8
'Wild Life'	•	•	•	•	•	•	•	•
Forestry	•	•	•	•	•	•	•	
Limited	•	•	•	•	•	•	•	
Moderate	•	•	•	•	•	•		
Intense	•	•	•	•	•			
Limited	•	•	•	•				
Moderate	•	•	•					
Intense	•	•						
Very Intense	•							

## Grazing Cultivation

(c) climatic limitations (e) susceptibility to erosion

(s) soil limitations within the rooting zone (w) excess of water