

FOR SALE

34.18 Acres MOL

RV Hookups, Pasture, & Recreation Land
Riesel, Falls County, (Waco, MSA), TX 76682

\$299,343

Owner Financing Offered



—“Stewards of Land”—
A DBA of Dube's Commercial, Inc. TREC# 484723

Bob Dube (Broker)

512-423-6670 (mobile) 254-803-5263 (LAND)

bob@texasfarmandranchrealty.com

www.texasfarmandranchrealty.com

**FOR
SALE**

34.18 Acres MOL

**RV Hookups, Pasture & Recreation Land
Riesel, Falls County, TX 76682**

Property Highlights

Location – 469 CR 159 Riesel Falls County, TX. Coming from intersection of I35 and Hwy 6 in Waco, Texas. Go South on Hwy 6 13.4 miles. Exit left onto Texas 164 and go 6.4 miles. Turn right onto FM 1860 and go 2.7 miles. Turn left onto FM 2603 and go 4.7 miles. Turn left onto Main St. Follow the curve right onto FM 1240 and continue 3.4. Turn left onto CR 159 and go 1.8 miles and the property will be on your left. Look for the Texas Farm and Ranch Realty sign. Located just 30 minutes from Waco, approximately 1 hour 40 minutes from Dallas, 1 hour 40 minutes from Austin and 2 hours 20 minutes from Houston.

Acres – 34.18 Acres MOL. A survey will be needed to determine the exact acreage.

Amenities

- 4 RV hookups each with their own septic and 50/30-amp pedestals for electricity
- 1 RV hookup has a 1,000SF metal cover with pad
- 4 septic systems on site
- Two sprinkler systems for irrigation
- Partially Fenced
- Very nice mature oak trees
- Large deep pond piped to the RV hookups for water
- Approximately 2,495 feet of road frontage along CR 159 & CR 178

Water – Tri-County Water has service in the area and there is no existing water meter to this property. View nearest well report in this brochure.

Electricity – There an electric meter on the property.

Soil – There are various soil types that make up the property. Please refer to the USDA Soil Map located in this brochure for soil types.

Ag Exemption – The property is currently not under Ag Exemption for tax purposes.

Minerals – All owned minerals convey.

Topography – The Land is flat with open and wooded areas.

Current Use – Privately owned and is used for pasture and recreation.

Easements – An abstract of title will need to be performed to determine any easements that may exist.

Showings - By appointment only.

Owner Financing Available - 20% down, 4.5% interest, 20-year amortization, 5 year call, \$1,515 monthly payment.

Presented At - \$299,343 or \$8,758 per acre

Texas Farm and Ranch Realty dba Dube's Commercial, Inc., does not make any representations or warranties expressed or implied as to the accuracy of this information. All sources are deemed reliable.



— "Stewards of Land"
A DBA of Dube's Commercial, Inc. TREC# 484723

Bob Dube (Broker)

512-423-6670 (mobile) 254-803-5263 (LAND)

bob@texasfarmandranchrealty.com

www.texasfarmandranchrealty.com

**FOR
SALE**

34.18 Acres MOL

**RV Hookups, Pasture & Recreation Land
Riesel, Falls County, TX 76682**

View of the Land



Bob Dube (Broker)

512-423-6670 (mobile) 254-803-5263 (LAND)

bob@texasfarmandranchrealty.com

www.texasfarmandranchrealty.com

**FOR
SALE**

34.18 Acres MOL

**RV Hookups, Pasture & Recreation Land
Riesel, Falls County, TX 76682**

View of the Land



TEXAS
FARM & RANCH REALTY

— "Stewards of Land" —
A DBA of Dube's Commercial, Inc. TREC# 484723

Bob Dube (Broker)

512-423-6670 (mobile) 254-803-5263 (LAND)

bob@texasfarmandranchrealty.com

www.texasfarmandranchrealty.com

**FOR
SALE**

34.18 Acres MOL

RV Hookups, Pasture & Recreation Land

Riesel, Falls County, TX 76682

Property Aerial View



—“Stewards of Land”—
A DBA of Dube’s Commercial, Inc. TREC# 484723

Bob Dube (Broker)

512-423-6670 (mobile) 254-803-5263 (LAND)

bob@texasfarmandranchrealty.com

www.texasfarmandranchrealty.com

RV Hookups, Pasture & Recreation Land

Riesel, Falls County, TX 76682



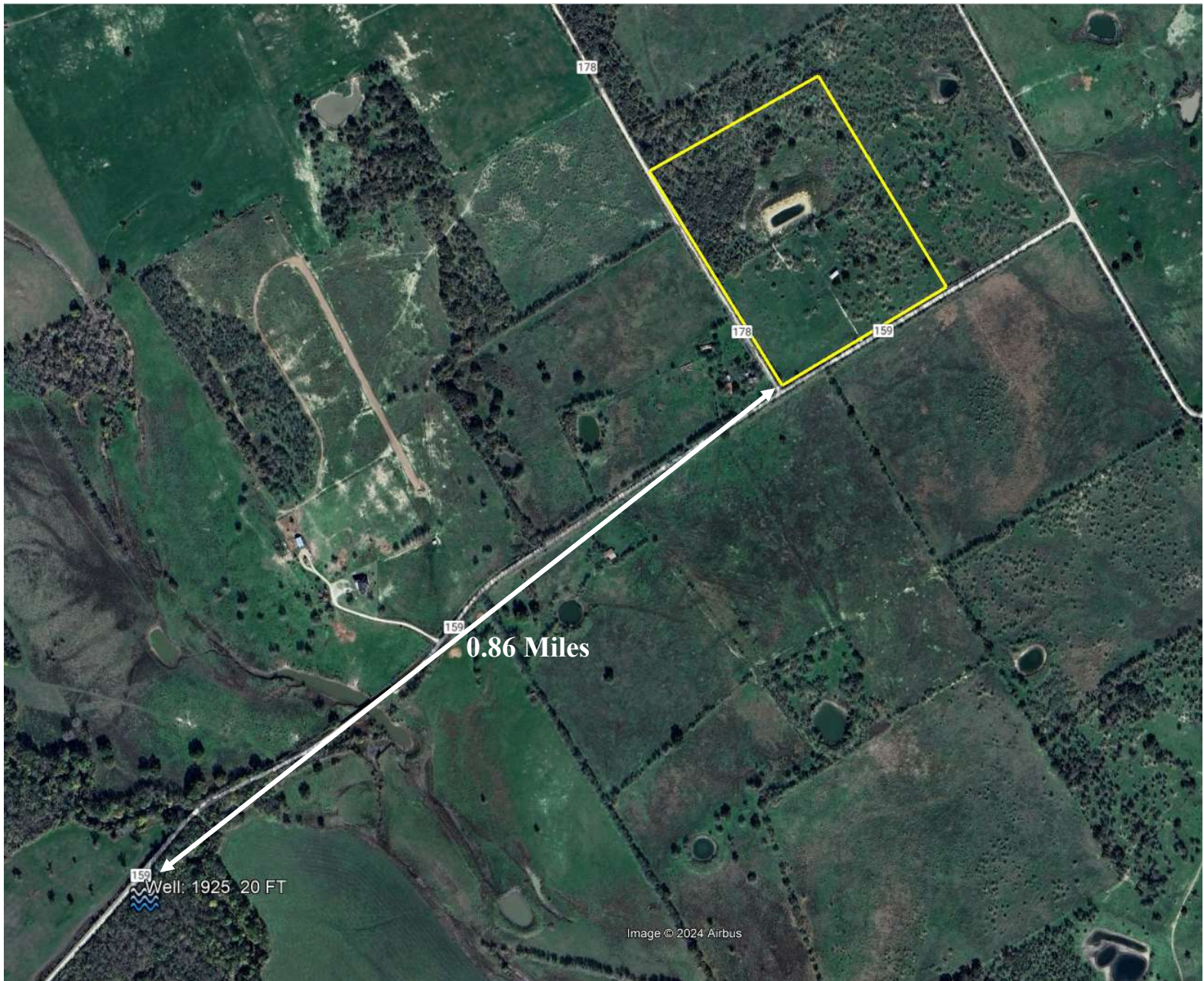
**FOR
SALE**

34.18 Acres MOL

RV Hookups, Pasture & Recreation Land

Riesel, Falls County, TX 76682

Aerial of Nearest Permitted Water Well



— "Stewards of Land" —
A DBA of Dube's Commercial, Inc. TREC# 484723

Bob Dube (Broker)

512-423-6670 (mobile) 254-803-5263 (LAND)

bob@texasfarmandranchrealty.com

www.texasfarmandranchrealty.com

FOR
SALE

34.18 Acres MOL

RV Hookups, Pasture & Recreation Land

Riesel, Falls County, TX 76682



Bob Dube (Broker)

512-423-6670 (mobile) 254-803-5263 (LAND)

bob@texasfarmandranchrealty.com

www.texasfarmandranchrealty.com

**FOR
SALE**

34.18 Acres MOL

RV Hookups, Pasture & Recreation Land

Riesel, Falls County, TX 76682

Soil Type Legend

Map Unit Symbol	Map Unit Name	Acres in AOI	Percent of AOI
20	Crockett fine sandy loam, 1 to 3 percent slopes	1.0	2.8%
65	Wilson silty clay loam, 0 to 1 percent slopes	28.5	84.0%
66	Wilson silty clay loam, 1 to 3 percent slopes	4.5	13.2%
Totals for Area of Interest		34.0	100.0%



— "Stewards of Land"
A DBA of Dube's Commercial, Inc. TREC# 484723

Bob Dube (Broker)

512-423-6670 (mobile) 254-803-5263 (LAND)

bob@texasfarmandranchrealty.com www.texasfarmandranchrealty.com

**FOR
SALE**

34.18 Acres MOL RV Hookups, Pasture & Recreation Land Riesel, Falls County, TX 76682

Soil Type- 20

20—Crockett fine sandy loam, 1 to 3 percent slopes. This deep, moderately well drained, gently sloping soil is on uplands. Slopes are convex. Areas range from 35 to 400 acres in size.

This soil has a surface layer of brown, medium acid fine sandy loam about 9 inches thick. Between depths of 9 and 17 inches is mottled brownish yellow and red, medium acid clay that has grayish brown mottles. Below this layer, to a depth of 29 inches, is mottled yellow and grayish brown, medium acid clay, that has reddish yellow mottles. Between depths of 29 and 42 inches is brown, slightly acid clay that has brownish yellow mottles; and between depths of 42 and 53 inches is brownish yellow, neutral clay that has light brownish gray and reddish yellow mottles. Between depths of 53 and 73 inches is yellow, moderately alkaline sandy clay loam that has light brownish gray, white, and yellowish brown mottles. The underlying layer, to a depth of 80 inches, is mottled yellow light gray, and brownish yellow, moderately alkaline sandy clay loam.

Hard surface crusts and dense plowpans that form in cultivated areas make this soil difficult to work. Permeability is very slow, and available water capacity is high. The root zone is deep, but root penetration is slow and difficult in the underlying layers. Runoff is medium. The hazard of water erosion is moderate.

Included with this soil in mapping are a few intermingled areas of Normangee and Wilson soils and eroded Crockett soils. The included soils make up about 10 to 20 percent of this map unit.

This soil has medium potential for production of crops, but it is limited by low natural fertility and rapid loss of soil moisture during the summer. The major crops are small grain for winter grazing and grain sorghum. The major objectives in management are controlling erosion, maintaining fertility, and improving tilth. Terracing and growing high-residue crops and deep-rooted legumes help control erosion and maintain tilth.

This soil has high potential for pasture. It is well suited to coastal bermudagrass, common bermudagrass, and weeping lovegrass. Proper pasture management includes fertilization, weed control, and controlled grazing.

This soil has high potential for range. The climax plant community is a mixture of tall and mid grasses and an overstory of a few live oak, elm, and hackberry trees along streams and in occasional motts.

This soil has low potential for most urban uses. Its most restrictive limitations are shrinking and swelling with changes in moisture, corrosivity to uncoated steel, and slow percolation. The potential for recreation is medium. The very slow permeability is the most restrictive limitation for this use. Potential for openland and range-land wildlife habitat is medium. Capability subclass IIIe; Claypan Prairie range site.



A DBA of Dube's Commercial, Inc. TREC# 484723

Bob Dube (Broker)

512-423-6670 (mobile) 254-803-5263 (LAND)

bob@texasfarmandranchrealty.com

www.texasfarmandranchrealty.com

**FOR
SALE**

34.18 Acres MOL RV Hookups, Pasture & Recreation Land Riesel, Falls County, TX 76682

Soil Type- 65

65—Wilson silty clay loam, 0 to 1 percent slopes. This deep, somewhat poorly drained, nearly level soil is on uplands and ancient stream terraces. Slopes are plane. Areas range from 20 to 200 acres in size.

This soil has a surface layer of dark gray, mildly alkaline silty clay loam about 6 inches thick. Below the surface layer, to a depth of 25 inches, is dark gray, mildly alkaline clay. Between depths of 25 and 39 inches is gray, mildly alkaline clay. Below this layer, to a depth of 58 inches, is light gray, moderately alkaline clay that has light yellowish brown mottles. The underlying layer, to a depth of 80 inches, is light olive gray, moderately alkaline clay that has yellowish brown mottles (fig. 10).

This soil is difficult to work because of surface crusts and dense plowpan layers that form in cultivated areas. When dry, this soil is extremely hard; when wet, it is sticky and plastic. Permeability is very slow, and available water capacity is high. The root zone is deep, but root penetration is slow and difficult in the underlying layers. Runoff is slow. The hazard of water erosion is slight.

Included with this soil in mapping are a few intermingled areas of Burleson, Crockett, and Normangee soils. The included soils make up about 10 to 20 percent of this map unit.

This soil has medium potential for production of crops. The major crops are grain sorghum, cotton, hay, and some small grain for winter grazing. The objectives of management are improving tilth and maintaining fertility. Growing crops that produce large amounts of residue and legumes helps maintain tilth.

This soil has medium potential for pasture. It is well suited to coastal bermudagrass, King Ranch bluestem, and weeping lovegrass. Pasture management needed includes fertilization, weed control, and controlled grazing.

This soil has medium potential for range. The climax plant community is a mixture of tall and mid grasses and an overstory of a few live oak, elm, and hackberry trees along streams and in occasional motts.

This soil has low potential for most urban uses. Its most restrictive limitation is shrinking and swelling with changes in moisture, occasional wetness, low strength, corrosivity to uncoated steel, and slow percolation. The potential for recreation is medium. Wetness and the very slow permeability are the most restrictive limitations for this use. Potential for both openland and rangeland wildlife habitat is medium. Capability subclass IIIw; Claypan Prairie range site.



—“Stewards of Land”
A DBA of Dube’s Commercial, Inc. TREC# 484723

Bob Dube (Broker)

512-423-6670 (mobile) 254-803-5263 (LAND)

bob@texasfarmandranchrealty.com

www.texasfarmandranchrealty.com

**FOR
SALE**

34.18 Acres MOL RV Hookups, Pasture & Recreation Land Riesel, Falls County, TX 76682

Soil Type- 66

66—Wilson silty clay loam, 1 to 3 percent slopes. This deep, somewhat poorly drained, gently sloping soil is on uplands and ancient stream terraces. Slopes are plane or slightly concave. Areas range from 15 to 150 acres in size.

The soil has a surface layer of very dark gray, mildly alkaline silty clay loam about 6 inches thick. Below the surface, to a depth of 28 inches, is dark gray, mildly alkaline clay. Between depths of 28 and 55 inches is gray, mildly alkaline clay. The underlying layer, to a depth of 80 inches, is light brownish gray, moderately alkaline clay that has brownish yellow mottles.

This soil is difficult to work because of surface crusts and dense plowpan layers that form in cultivated areas. When dry, this soil is extremely hard; when wet, it is sticky and gummy. Permeability is very slow, and available water capacity is high. The root zone is deep, but root penetration is slow and difficult in the underlying layers. Runoff is medium. The hazard of water erosion is moderate.

Included with this soil in mapping are a few intermingled areas of Burleson, Crockett, and Normangee soils. Also included are a few areas of eroded Wilson soils. The included soils make up about 10 to 20 percent of this map unit.

This soil has medium potential for production of crops, but it is limited for this use by surface crusting and rapid loss of soil moisture during the summer. The major crops are grain sorghum, cotton, and small grain for winter grazing. The major objectives of management are controlling erosion, maintaining fertility, and improving tilth. Growing crops that produce large amounts of residue or growing deep-rooted legumes help to control erosion and maintain tilth.

This soil has medium potential for pasture. It is well suited to coastal bermudagrass, King Ranch bluestem, and weeping lovegrass. Needed pasture management includes fertilization, weed control, and controlled grazing.

This soil has medium potential for range. The climax plant community is a mixture of tall and mid grasses and an overstory of a few live oak, elm, and hackberry trees along streams and occasionally in motts.

This soil has low potential for most urban uses. Its most restrictive limitations are shrinking and swelling with changes in moisture, occasional wetness, low strength, corrosivity to uncoated steel, and slow percolation. The potential for recreation is medium. Occasional wetness and the very slow permeability are the most restrictive limitations for this use. Potential for both openland and rangeland wildlife habitat is medium. Capability subclass IIIe; Claypan Prairie range site.



—“Stewards of Land”
A DBA of Dube’s Commercial, Inc. TREC# 484723

Bob Dube (Broker)

512-423-6670 (mobile) 254-803-5263 (LAND)

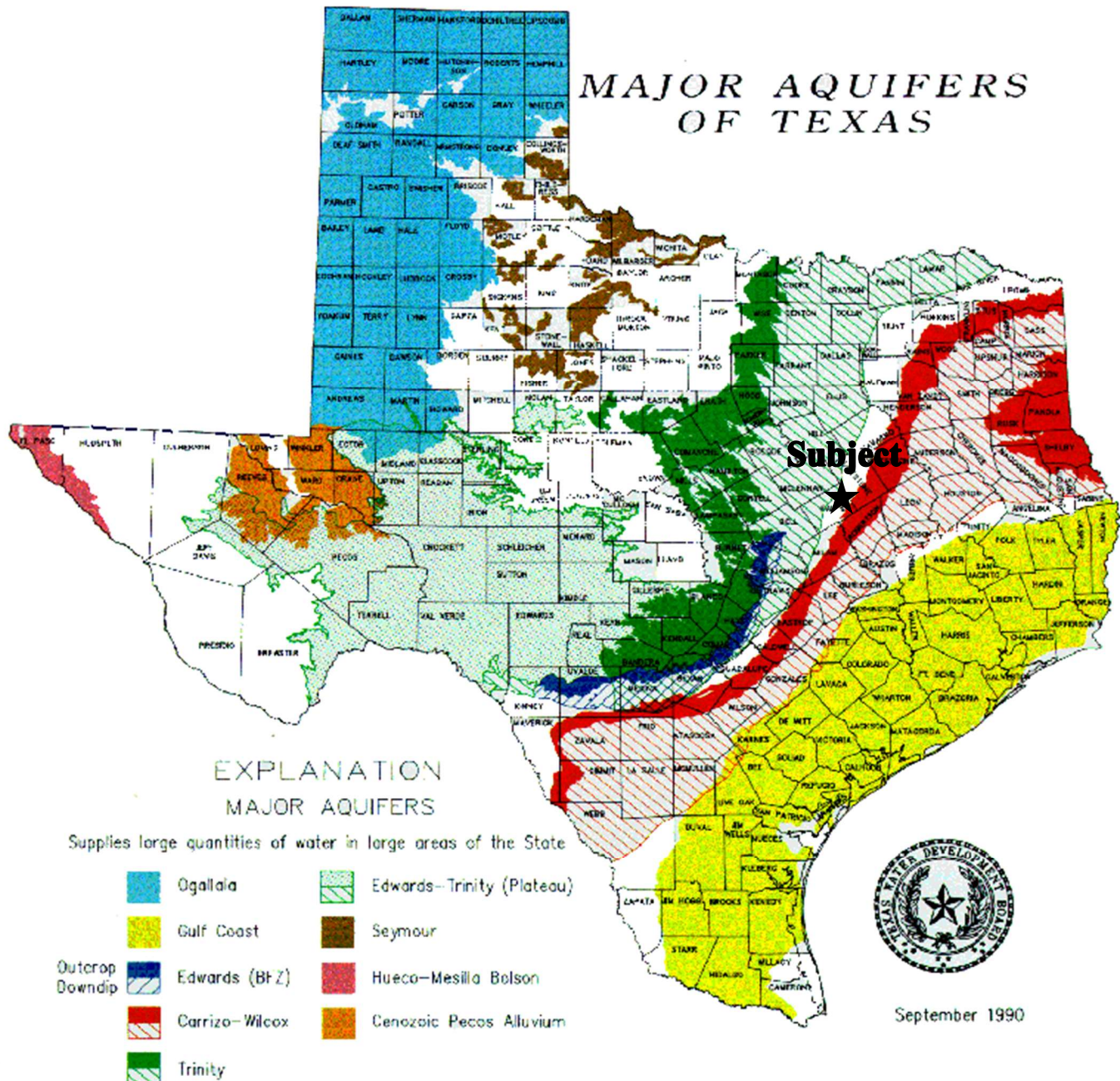
bob@texasfarmandranchrealty.com www.texasfarmandranchrealty.com

FOR
SALE

34.18 Acres MOL

RV Hookups, Pasture & Recreation Land
Riesel, Falls County, TX 76682

Property Location to Major Aquifers of Texas



TEXAS
FARM & RANCH REALTY

—“Stewards of Land”—
A DBA of Dube’s Commercial, Inc. TREC# 484723

Bob Dube (Broker)

512-423-6670 (mobile) 254-803-5263 (LAND)

bob@texasfarmandranchrealty.com

www.texasfarmandranchrealty.com

**FOR
SALE**

34.18 Acres MOL

**RV Hookups, Pasture & Recreation Land
Riesel, Falls County, TX 76682**

Topo Map



Bob Dube (Broker)

512-423-6670 (mobile) 254-803-5263 (LAND)

bob@texasfarmandranchrealty.com

www.texasfarmandranchrealty.com

A DBA of Dube's Commercial, Inc. TREC# 484723

**FOR
SALE**

34.18 Acres MOL

RV Hookups, Pasture & Recreation Land

Riesel, Falls County, TX 76682

CONFIDENTIALITY & DISCLAIMER

The information contained in the following Investment Brochure is proprietary and strictly confidential. It is intended to be reviewed only by the party receiving it from Dube's Commercial Inc. and should not be made available to any other person or entity without the written consent of Dube's Commercial Inc. This Investment Brochure has been prepared to provide summary information to prospective investors, and to establish only a preliminary level of interest in the subject property. The information contained herein is not a substitute for a thorough due diligence investigation. Dube's Commercial Inc. makes no warranty or representation, with respect to the income or expenses for the subject property, the future projected financial performance of the property, the size and square footage of the property and improvements, the presence or absence of contaminating substances, PCB's or asbestos, the compliance with State and Federal regulations, the physical condition of the improvements thereon, or the financial condition or business prospects of any tenant, or any tenant's plans or intentions to continue its occupancy of the subject property. The information contained in this Investment Brochure has been obtained from sources we believe to be reliable; however, Dube's Commercial Inc. makes no warranty or representation whatsoever regarding the accuracy or completeness of the information provided.

**THE TEXAS REAL ESTATE COMMISSION (TREC) REGULATES
REAL ESTATE BROKERS AND SALES AGENTS, REAL ESTATE INSPECTORS,
HOME WARRANTY COMPANIES, EASEMENT AND RIGHT-OF-WAY AGENTS
AND TIMESHARE INTEREST PROVIDERS**

**YOU CAN FIND MORE INFORMATION AND
CHECK THE STATUS OF A LICENSE HOLDER AT
WWW.TREC.TEXAS.GOV**

**YOU CAN SEND A COMPLAINT AGAINST A LICENSE HOLDER TO TREC
A COMPLAINT FORM IS AVAILABLE ON THE TREC WEBSITE**

**TREC ADMINISTERS TWO RECOVERY FUNDS WHICH MAY BE USED TO
SATISFY A CIVIL COURT JUDGMENT AGAINST A BROKER, SALES AGENT,
REAL ESTATE INSPECTOR, OR EASEMENT OR RIGHT-OF-WAY AGENT,
IF CERTAIN REQUIREMENTS ARE MET**

**IF YOU HAVE QUESTIONS OR ISSUES ABOUT THE ACTIVITIES OF
A LICENSE HOLDER, THE COMPLAINT PROCESS OR THE
RECOVERY FUNDS, PLEASE VISIT THE WEBSITE OR CONTACT TREC AT**



**TEXAS REAL ESTATE COMMISSION
P.O. BOX 12188
AUSTIN, TEXAS 78711-2188
(512) 936-3000**



A DBA of Dube's Commercial, Inc. TREC# 484723

Bob Dube (Broker)

512-423-6670 (mobile) 254-803-5263 (LAND)

bob@texasfarmandranchrealty.com

www.texasfarmandranchrealty.com

RV Hookups, Pasture & Recreation Land

Riesel, Falls County, TX 76682



EQUAL HOUSING
OPPORTUNITY

—“Stewards of Land”
A DBA of Dube’s Commercial, Inc. TREC# 484723