



**0 FM 834 HARDIN, TX 77564**

**LIBERTY COUNTY**

**94± ACRES | \$1,367,930**



**COLDWELL BANKER**  
D'ANN HARPER, REALTORS®  
LAND & RANCH



# PROPERTY DESCRIPTION.

Embrace the limitless potential of 94.34 pristine acres nestled within the vibrant landscape of Liberty County. Located in a region experiencing explosive growth, this expansive property offers an exceptional canvas for development, making it an investment opportunity like no other. A key feature of this property is the presence of a sewer lift station, a significant advantage for any development project. With electricity readily available & the option to apply for a public water tie-in, you have the essential elements in place to bring your ideas to life. For those who crave the best of both worlds, this property offers the tranquility of the laid-back country life while remaining less than an hour's drive from the heart of downtown Houston. Boasting an impressive 2,315 ft. of road frontage on two sides, this property provides excellent visibility and accessibility for potential development ventures. Don't miss out on this exceptional opportunity for development!



THE INFORMATION PROVIDED HEREIN IS BELIEVED TO BE ACCURATE BUT IS NOT GUARANTEED BY ANDRUS LAND GROUP. DETAILS ARE SUBJECT TO CHANGE AT ANY TIME WITHOUT NOTICE.





THE INFORMATION PROVIDED HEREIN IS BELIEVED TO BE ACCURATE BUT IS NOT GUARANTEED BY ANDRUS LAND GROUP. DETAILS ARE SUBJECT TO CHANGE AT ANY TIME WITHOUT NOTICE.





## PROPERTY FEATURES

Acreage, Recreational Land, Commercial Acreage, Farm, Ranch, Cattle Ranch



THE INFORMATION PROVIDED HEREIN IS BELIEVED TO BE ACCURATE BUT IS NOT GUARANTEED BY ANDRUS LAND GROUP. DETAILS ARE SUBJECT TO CHANGE AT ANY TIME WITHOUT NOTICE.



# 0 FM 834 HARDIN, TX 77564

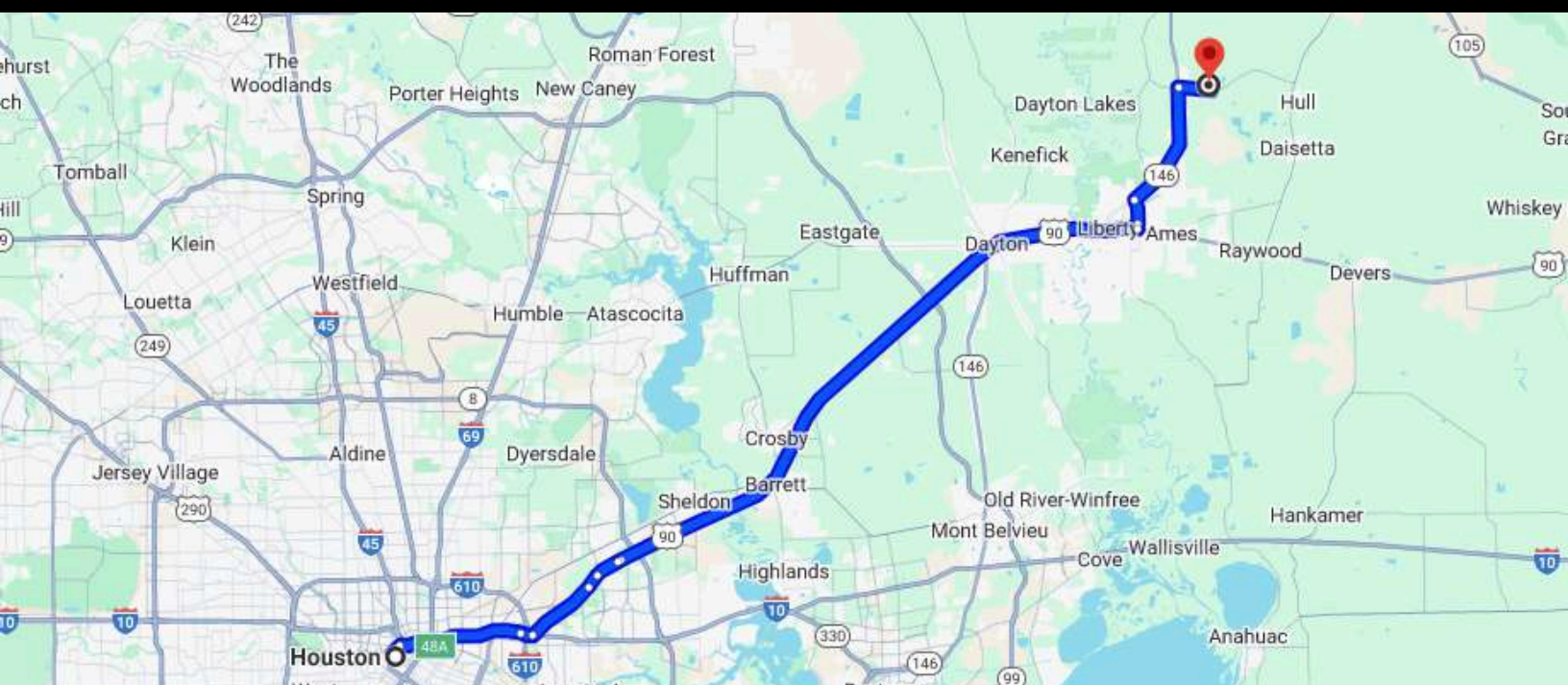
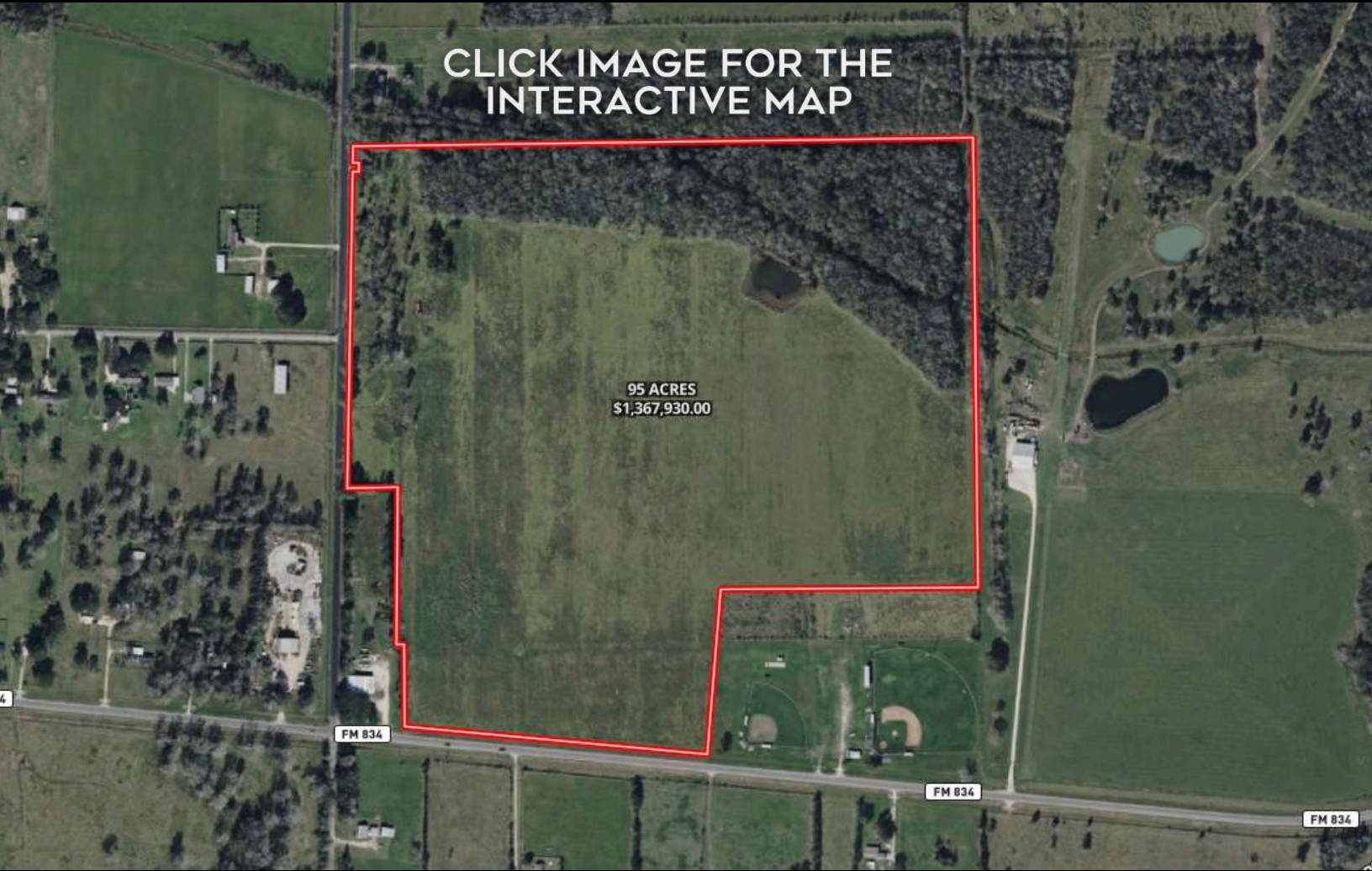
## LIBERTY COUNTY



THE INFORMATION PROVIDED HEREIN IS BELIEVED TO BE ACCURATE BUT IS NOT GUARANTEED BY ANDRUS LAND GROUP. DETAILS ARE SUBJECT TO CHANGE AT ANY TIME WITHOUT NOTICE.



CLICK IMAGE FOR THE  
INTERACTIVE MAP



## NAVIGATION DIRECTIONS

### From Hwy 90 in Liberty:

Take Hwy 146 north for 7.5 miles, turn right on FM 834, travel 1.2 miles property will be on your left



# CHAD ANDRUS, ALC ACCREDITED LAND CONSULTANT

chad@andruslandgroup.com

832-402-9211

www.andruslandgroup.com



ALL MATERIALS AND INFORMATION RECEIVED OR DERIVED FROM ANDRUS LAND GROUP AND ITS DIRECTORS, OFFICERS, AGENTS, ADVISORS, AFFILIATES AND/OR ANY THIRD PARTY SOURCES ARE PROVIDED WITHOUT REPRESENTATION OR WARRANTY AS TO COMPLETENESS, VERACITY, OR ACCURACY, CONDITION OF THE PROPERTY, COMPLIANCE OR LACK OF COMPLIANCE WITH APPLICABLE GOVERNMENTAL REQUIREMENTS, DEVELOPABILITY OR SUITABILITY, FINANCIAL PERFORMANCE OF THE PROPERTY, PROJECTED FINANCIAL PERFORMANCE OF THE PROPERTY FOR ANY PARTY'S INTENDED USE OR ANY AND ALL OTHER MATTERS. NEITHER ANDRUS LAND GROUP, ITS DIRECTORS, OFFICERS, AGENTS, ADVISORS, OR AFFILIATES MAKES ANY REPRESENTATION OR WARRANTY, EXPRESS OR IMPLIED, AS TO ACCURACY OR COMPLETENESS OF THE MATERIALS OR INFORMATION PROVIDED, DERIVED, OR RECEIVED. MATERIALS AND INFORMATION FROM ANY SOURCE, WHETHER WRITTEN OR VERBAL, THAT MAY BE FURNISHED FOR REVIEW ARE NOT A SUBSTITUTE FOR A PARTY'S ACTIVE CONDUCT OF ITS OWN DUE DILIGENCE TO DETERMINE THESE AND OTHER MATTERS OF SIGNIFICANCE TO SUCH PARTY. ANDRUS LAND GROUP WILL NOT INVESTIGATE OR VERIFY ANY SUCH MATTERS OR CONDUCT DUE DILIGENCE FOR A PARTY UNLESS OTHERWISE AGREED IN WRITING. EACH PARTY SHALL CONDUCT ITS OWN INDEPENDENT INVESTIGATION AND DUE DILIGENCE.

# Ranch. financing made simple



**WINNIE OFFICE**

NMLS493828 | 409.400.4066 | capitalfarmcredit.com



**Anthony Vaughan**