



1865 N HWY 326, KOUNTZE, TEXAS, 77625
HARDIN COUNTY

74± ACRES | \$485,480



COLDWELL BANKER
D'ANN HARPER, REALTORS®
LAND & RANCH

COPYRIGHT © BY ANDRUS LAND GROUP

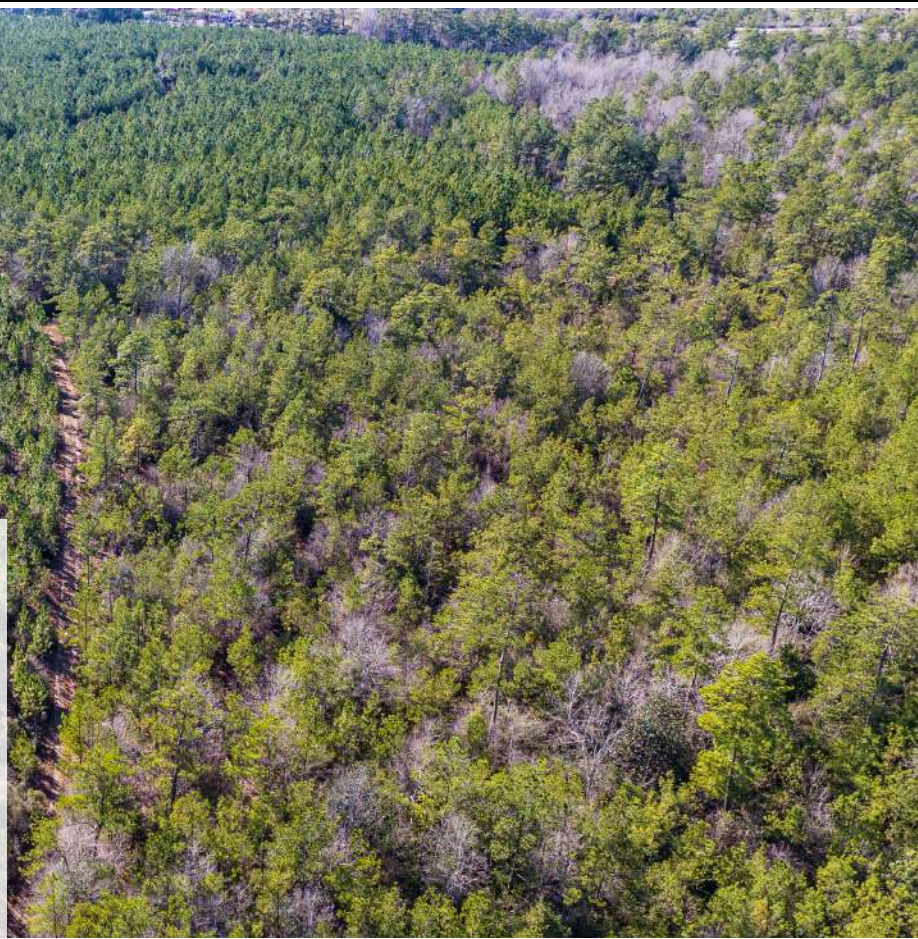
WWW.ANDRUSLANDGROUP.COM | 832-536-9164



THE INFORMATION PROVIDED HEREIN IS BELIEVED TO BE ACCURATE BUT IS NOT GUARANTEED BY ANDRUS LAND GROUP. DETAILS ARE SUBJECT TO CHANGE AT ANY TIME WITHOUT NOTICE.

PROPERTY DESCRIPTION.

OWNER FINANCING AVAILABLE!! Nestled just outside the Kountze city limits, this expansive 74.689-acre tract offers a rare blend of accessibility and secluded natural beauty. With Hwy 326 frontage and only 1.5 miles from the intersection of Hwy 326 & Hwy 69, this property presents an exceptional opportunity for development or investment. The land boasts a rich mix of pine and hardwoods, creating a serene and picturesque setting ideal for hunting, recreation, or simply escaping into nature. Additionally, its proximity to a substation across the road highlights its potential as a prime solar farm location. Whether you're looking to harness its development potential or enjoy the vast tranquility it offers, this property is a canvas awaiting your vision.



THE INFORMATION PROVIDED HEREIN IS BELIEVED TO BE ACCURATE BUT IS NOT GUARANTEED BY ANDRUS LAND GROUP. DETAILS ARE SUBJECT TO CHANGE AT ANY TIME WITHOUT NOTICE.



PROPERTY FEATURES

Creek, Hunting, Electricity, Hwy-County Rd Frontage, Development Potential, Timber



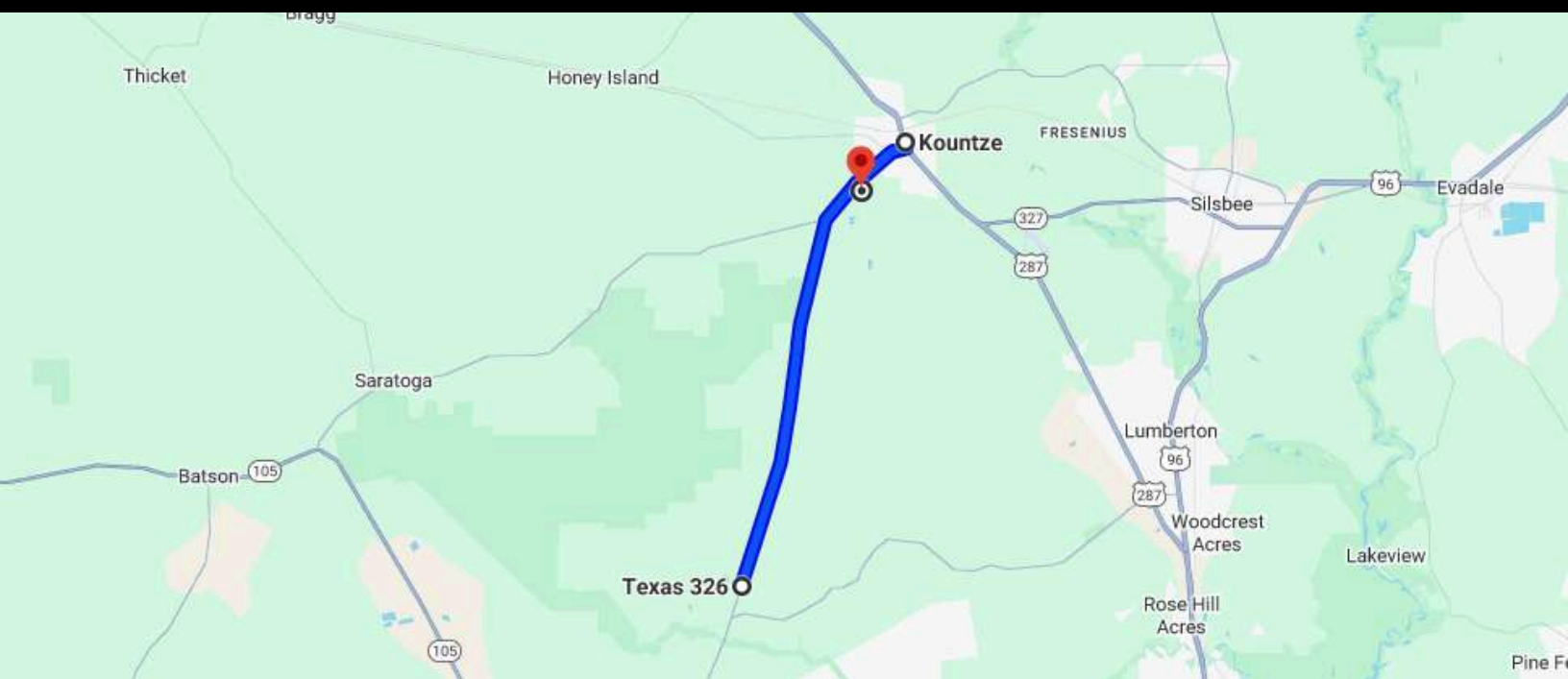
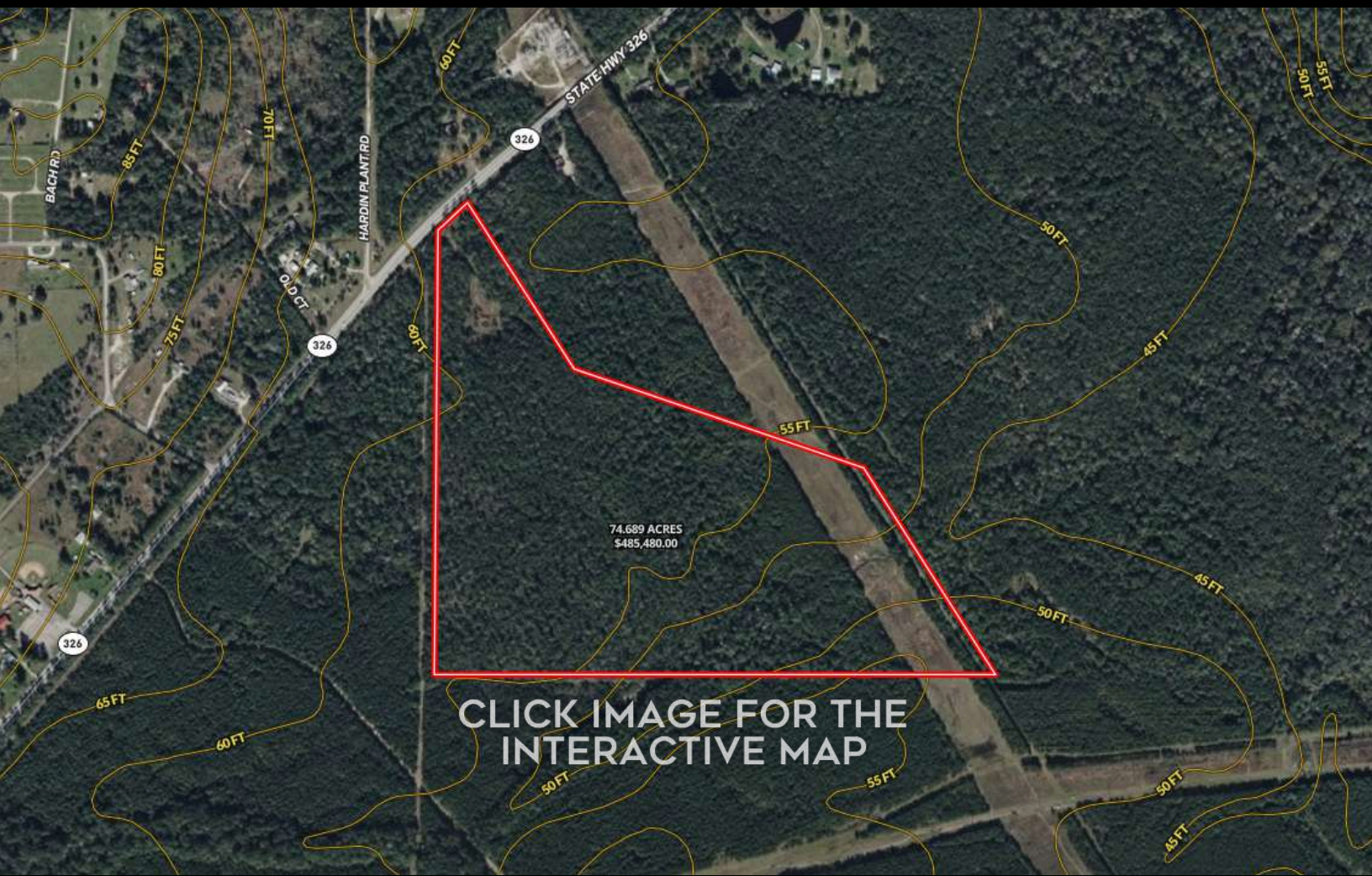
THE INFORMATION PROVIDED HEREIN IS BELIEVED TO BE ACCURATE BUT IS NOT GUARANTEED BY ANDRUS LAND GROUP. DETAILS ARE SUBJECT TO CHANGE AT ANY TIME WITHOUT NOTICE.

1865 N HWY 326, KOUNTZE, TEXAS, 77625

HARDIN COUNTY



THE INFORMATION PROVIDED HEREIN IS BELIEVED TO BE ACCURATE BUT IS NOT GUARANTEED BY ANDRUS LAND GROUP. DETAILS ARE SUBJECT TO CHANGE AT ANY TIME WITHOUT NOTICE.



NAVIGATION DIRECTIONS

From the intersection of Hwy 326 & Hwy 69 in Kountze:
Travel west on Hwy 326 for 1.5 miles. Property will be on your left.

CHAD ANDRUS, ALC ACCREDITED LAND CONSULTANT

chad@andruslandgroup.com

832-402-9211

www.andruslandgroup.com



ALL MATERIALS AND INFORMATION RECEIVED OR DERIVED FROM ANDRUS LAND GROUP AND ITS DIRECTORS, OFFICERS, AGENTS, ADVISORS, AFFILIATES AND/OR ANY THIRD PARTY SOURCES ARE PROVIDED WITHOUT REPRESENTATION OR WARRANTY AS TO COMPLETENESS, VERACITY, OR ACCURACY, CONDITION OF THE PROPERTY, COMPLIANCE OR LACK OF COMPLIANCE WITH APPLICABLE GOVERNMENTAL REQUIREMENTS, DEVELOPABILITY OR SUITABILITY, FINANCIAL PERFORMANCE OF THE PROPERTY, PROJECTED FINANCIAL PERFORMANCE OF THE PROPERTY FOR ANY PARTY'S INTENDED USE OR ANY AND ALL OTHER MATTERS. NEITHER ANDRUS LAND GROUP, ITS DIRECTORS, OFFICERS, AGENTS, ADVISORS, OR AFFILIATES MAKES ANY REPRESENTATION OR WARRANTY, EXPRESS OR IMPLIED, AS TO ACCURACY OR COMPLETENESS OF THE MATERIALS OR INFORMATION PROVIDED, DERIVED, OR RECEIVED. MATERIALS AND INFORMATION FROM ANY SOURCE, WHETHER WRITTEN OR VERBAL, THAT MAY BE FURNISHED FOR REVIEW ARE NOT A SUBSTITUTE FOR A PARTY'S ACTIVE CONDUCT OF ITS OWN DUE DILIGENCE TO DETERMINE THESE AND OTHER MATTERS OF SIGNIFICANCE TO SUCH PARTY. ANDRUS LAND GROUP WILL NOT INVESTIGATE OR VERIFY ANY SUCH MATTERS OR CONDUCT DUE DILIGENCE FOR A PARTY UNLESS OTHERWISE AGREED IN WRITING. EACH PARTY SHALL CONDUCT ITS OWN INDEPENDENT INVESTIGATION AND DUE DILIGENCE.

Ranch. financing made simple



WINNIE OFFICE

NMLS493828 | 409.400.4066 | capitalfarmcredit.com



Anthony Vaughan