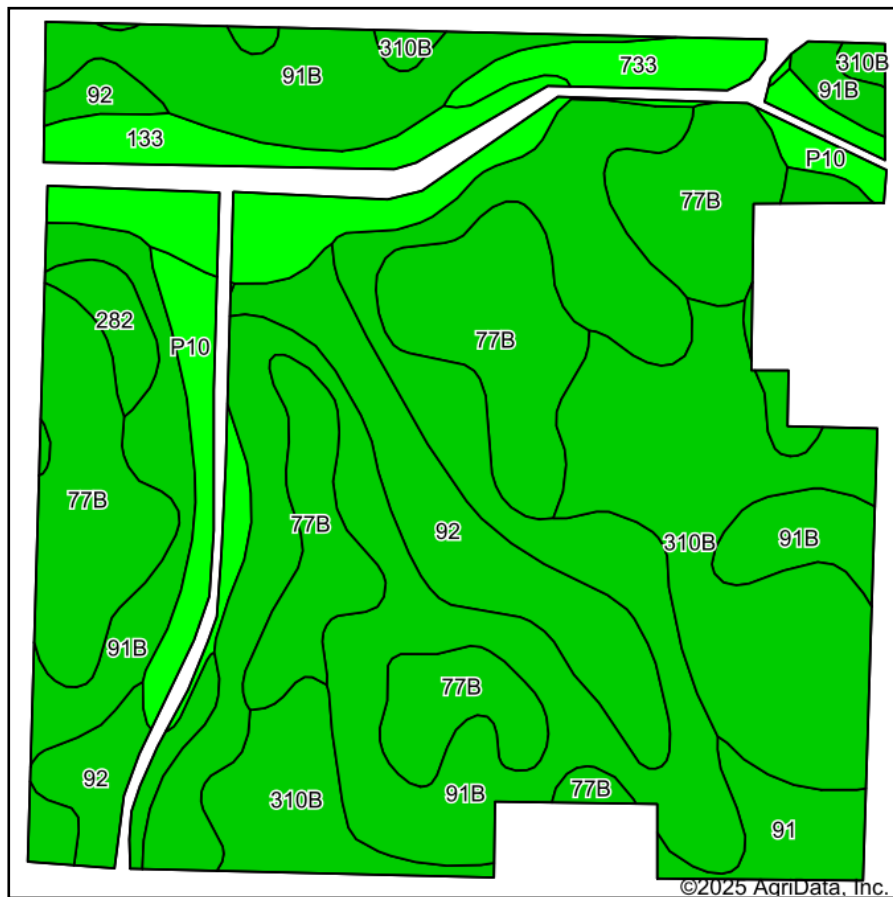
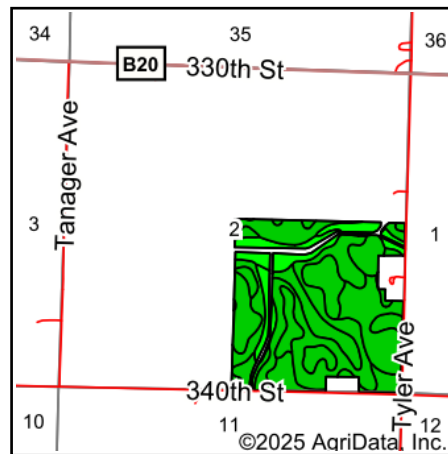


Soils Map



Soils data provided by USDA and NRCS.



State: **Iowa**
 County: **O'Brien**
 Location: **2-96N-40W**
 Township: **Center**
 Acres: **143.17**
 Date: **6/2/2025**

MIDWEST LAND & REAL ESTATE, INC.
 712-262-3110 MANAGEMENT
 Maps Provided By: **surety**
 CUSTOMIZED ONLINE MAPPING
 © AgriData, Inc. 2023 www.AgriDataInc.com



Area Symbol: IA141, Soil Area Version: 29

| Code | Soil Description | Acres | Percent of field | CSR2 Legend | Non-Irr Class *c | CSR2** | CSR |
|------------------|---|-------|------------------|-------------|------------------|--------|-----|
| 91B | Primghar silty clay loam, 2 to 5 percent slopes | 53.05 | 37.1% | | Ile | 95 | 78 |
| 77B | Sac silty clay loam, loam substratum, 2 to 5 percent slopes | 29.30 | 20.5% | | Ile | 95 | 68 |
| 310B | Galva silty clay loam, 2 to 5 percent slopes | 24.16 | 16.9% | | Ile | 95 | 70 |
| 92 | Marcus silty clay loam, 0 to 2 percent slopes | 13.67 | 9.5% | | Ilw | 94 | 75 |
| 133 | Colo silty clay loam, deep loess, 0 to 2 percent slopes, occasionally flooded | 9.15 | 6.4% | | Ilw | 78 | 73 |
| P10 | Afton silty clay loam, Sheldon creek formation, 0 to 2 percent slopes, occasionally flooded | 5.89 | 4.1% | | Ilw | 82 | |
| 91 | Primghar silty clay loam, 0 to 2 percent slopes | 3.22 | 2.2% | | Iw | 100 | 80 |
| 733 | Calco silty clay loam, 0 to 2 percent slopes, occasionally flooded | 3.03 | 2.1% | | Ilw | 78 | 68 |
| 282 | Ransom silty clay loam, 1 to 3 percent slopes | 1.70 | 1.2% | | Iw | 100 | 75 |
| Weighted Average | | | | | 1.97 | 93.1 | *- |

**IA has updated the CSR values for each county to CSR2.

*- CSR weighted average cannot be calculated on the current soils data, use prior data version for csr values.

*c: Using Capabilities Class Dominant Condition Aggregation Method

Soils data provided by USDA and NRCS.