



FARM & RANCH

EXCEPTIONAL 89+ AC ESTATE IN THE HEART OF TEXAS

1150 Loggins Trail— Poolville, TX



STEPHEN
REICH GROUP
WILLIAMS TREW REAL ESTATE

Williamstrew[☆]
A DIVISION OF EBBY HALLIDAY REAL ESTATE, INC.

LISTED BY STEPHEN REICH GROUP OF WILLIAMS TREW REAL ESTATE

PROPERTY SUMMARY

DESCRIPTION

This is a rare opportunity to own a truly remarkable piece of Texas — 88+ acres of rolling sandy loam terrain, highlighted by scattered hardwoods, multiple large water features, and breathtaking panoramic views. From the moment you pull through the gated entrance, you'll be struck by the natural beauty and the clear pride of ownership that defines every inch of this property.

The land offers a picturesque blend of open pasture and wooded areas, making it ideal for livestock, recreation, or simply enjoying the peaceful rural lifestyle. At the center of the ranch sits a custom 60x80 shop that goes far beyond expectations. This impressive structure houses a beautifully designed two-bedroom barn apartment — easily one of the most upscale and thoughtfully crafted you'll ever see. Adjacent to the living space is a spacious 20x80 covered porch, which serves as both a carport and outdoor gathering area. The shop also includes three large roll-up bays, spray foam insulation for energy efficiency, and is fully wired for a security camera system.

Nearby, the original old farm barn has been lovingly restored and reimagined as a rustic yet refined party barn. Great care was taken to maintain its character and charm while making it a functional and inviting space for entertaining guests or hosting family gatherings.

As you make your way across the property, the crown jewel reveals itself — a fully custom, high-end 3,300 square foot main home that blends refined luxury with timeless style. Constructed from beautiful Leuders stone with elegant Spanish accents, the home offers three bedrooms, two and a half bathrooms, a large office, a dedicated media room, and an oversized two-car garage. Inside, every detail has been thoughtfully chosen, from the antique Amish hand-hewn beams and oak hardwood floors to the knotty alder cabinetry, travertine tile, and professional-grade Wolf appliances.

Step outside to the serene back porch, where a full outdoor kitchen awaits, providing the perfect setting to take in the peaceful surroundings and unforgettable Texas sunsets.

This property is more than just land and buildings — it's a turnkey lifestyle offering, ideal as a permanent residence, weekend escape, or legacy investment. With its unbeatable combination of natural beauty, luxury amenities, and functional ranch infrastructure, this is a once-in-a-lifetime chance to own one of the finest ranch estates in Texas. Schedule your private showing today.

LOCATION

CITY	Poolville
County	Parker
Schools	Poolville ISD
Driving Directions	Take Zion Hill and go East on Loggins Trail

OFFER SUMMARY

List Price	\$3,850,000
Lot Size	89.537 acres
Utilities	Septic, Well

HIGHLIGHTS

3,337 SF | 3 BEDS | 2.5 BATHS

20X80 COVERED PORCH

OLD FARM BARN

DEDICATED MEDIA ROOM

20X80 COVERED PORCH

SHOP W/ THREE LARGE ROLL-UP BAYS

LISTING PRESENTED BY:



STEPHEN REICH
817-597-8884
stephen.reich@williamstrew.com



TAMMY ROKUS
817-694-8019
tammy.rokus@williamstrew.com



WEBSITE



VIDEO

PROPERTY PHOTOS



STEPHEN REICH – 817.597.8884
TAMMY ROKUS – 817.694.8019



WilliamsTrew
A DIVISION OF EBBY HALLIDAY REAL ESTATE, INC.

PROPERTY PHOTOS



STEPHEN REICH – 817.597.8884
TAMMY ROKUS – 817.694.8019



WilliamsTrew[☆]
A DIVISION OF EBBY HALLIDAY REAL ESTATE, INC.

AERIAL MAP

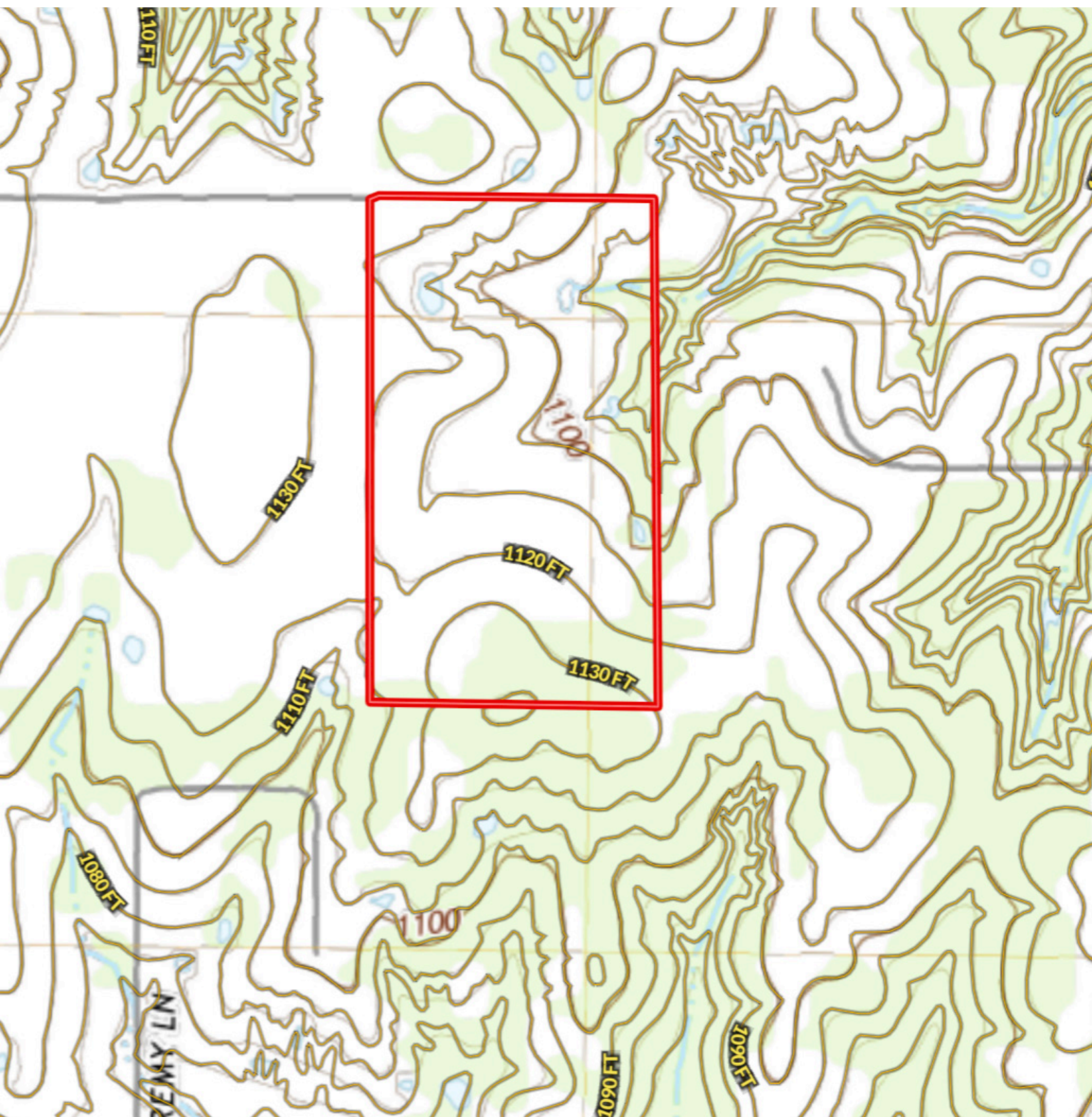


STEPHEN REICH – 817.597.8884
TAMMY ROKUS – 817.694.8019



WilliamsTrew 
A DIVISION OF EBBY HALLIDAY REAL ESTATE, INC.

CONTOUR LINES & FLOODPLAIN



STEPHEN REICH – 817.597.8884
TAMMY ROKUS – 817.694.8019

