

# WELCOME TO 2020 WIDNER ROAD, MIDVALE, ID 83645



4 BED



2 BATH



2 CAR GARAGE



2,156 SQ FT



## PROPERTY DETAILS

Love the idea of **open space and farm views**-without the work of running a farm?

This custom 4 bed, 2 bath home on just over an acre in peaceful Midvale, ID, offers modern comfort with a rural backdrop.

**First time on the market**, this 2,100+ sq ft home features a bright, open layout, **large kitchen**, central heat & air, corner fireplace, and a spacious primary suite with walk-in closet and full bath. Enjoy panoramic views of Cutty Mountain, quiet evenings on the shaded patio, and room to breathe. With no close neighbors or traffic noise, the private yard is ideal for pets, gardening, or relaxing.

Nestled along a **quiet country road** in a tight-knit community with excellent schools and easy access to outdoor recreation, this is the perfect way to enjoy the charm of **small-town Idaho**—without the commitment of full acreage living.



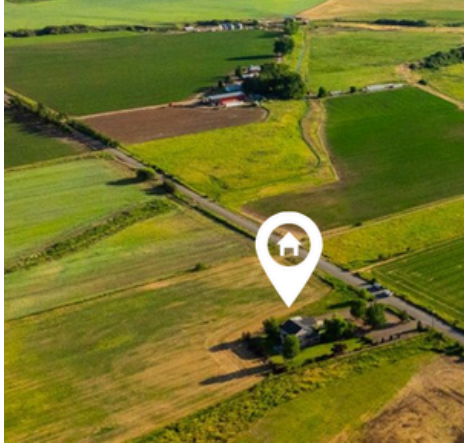
SCAN QR CODE FOR MORE!

208.391.5331

GOPORCH.COM



# WELCOME TO 2020 WIDNER ROAD, MIDVALE, ID 83645



← **SCAN** QR CODE FOR VIRTUAL TOUR