



HOLOPAW FARM LEASE

6210 Holopaw Rd, Saint Cloud, FL 34773

Jeff Cusson, CCIM
772.473.8497
jeff@saundersrealestate.com

Bryan Cusson
772.559.4789
bryan@saundersrealestate.com

David Lapham
517.990.4907
davidl@saundersrealestate.com



PROPERTY OVERVIEW



Lease Rate

CALL FOR PRICING

OFFERING SUMMARY

Acreage: **2,200 Acres**

City: Saint Cloud

County: Osceola

Property Type: Land: Agronomics,
Farms & Nurseries
Properties, Hemp,
Sod, Strawberry,
Vegetables

PROPERTY OVERVIEW

Available for long term lease, this former 2200 acre citrus grove with excellent infrastructure is ready for conversion to its next agricultural use: sod, farming, equestrian, solar water farming or replanting to citrus or other tree crop. The property has outstanding farming attributes including paved road access, wells, barn, electric power, drainage canals and ditches. The property's location just three miles south of US 192 on US 441 in Osceola County, is well position for servicing the needs of Theme Parks or the rapidly growing Orlando Market.

Water resources including (20) 12" wells and turbine pumps and is permitted for 1.9 Billion gallons per year. Owner will work with farmer to offset a portion of the development costs to convert the property to alternative uses.

The owner has an additional 3,000 acres adjacent to the farm available for future expansion.

SPECIFICATIONS & FEATURES



SPECIFICATIONS & FEATURES

Land Types:	• Agronomics
	• Farms & Nurseries Properties
	• Sod
	• Strawberry
	• Vegetables
Soil Types:	• Smyrna Fine Sand 1043 acres
	• Basinger Fine Sand Depressional 397 acres
	• Myakka Fine Sand 237 acres
	• Malabar Fine Sand 160 acres
	• Basinger Fine Sand 114 acres
	• Placid Fine Sand Depressional 51 acres
	• Pomello Fine Sand 43 acres
	• Immokalee Fine Sand 42 acres
	• Cassia Fine Sand 37 acres
	• 40 Samsula Muck 15
Zoning / FLU:	Agricultural
Wells Information:	(20) 12" wells
Water use Permits:	Provides for up to 1.9 Billion gallons per year for irrigation
Irrigation:	Microjet irrigation in place.

LOCATION

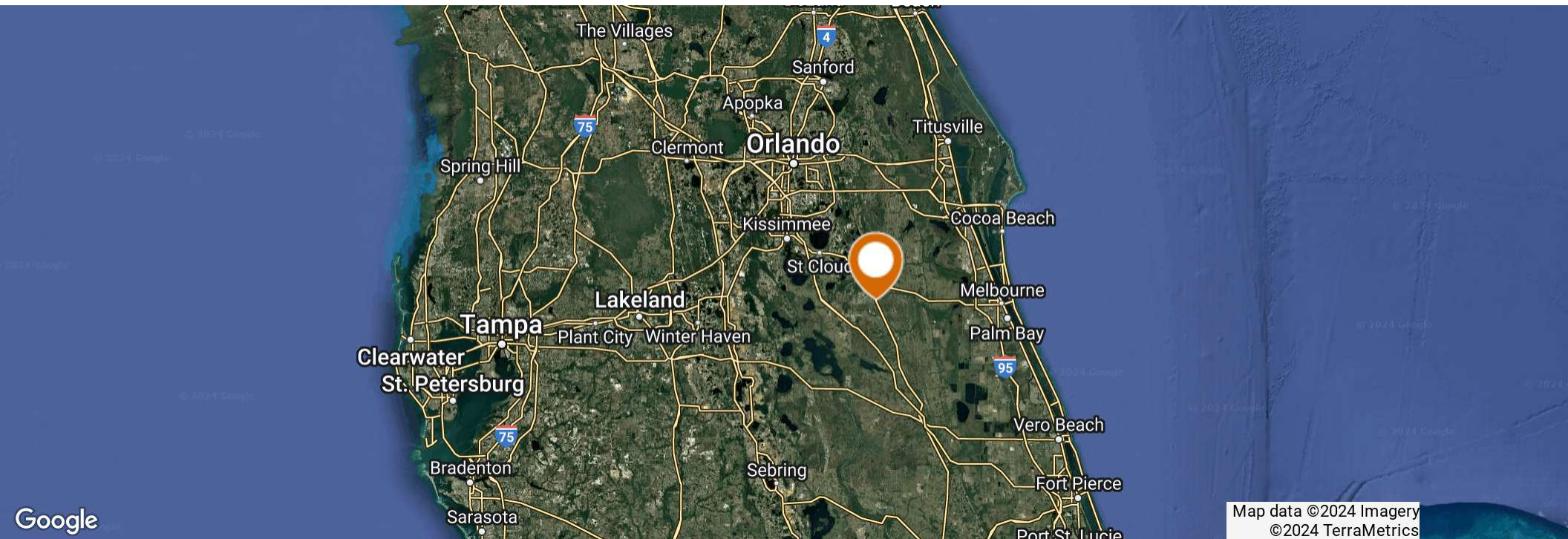


LOCATION & DRIVING DIRECTIONS

Parcel:	362732000000200000
GPS:	28.0940188, -81.0750534

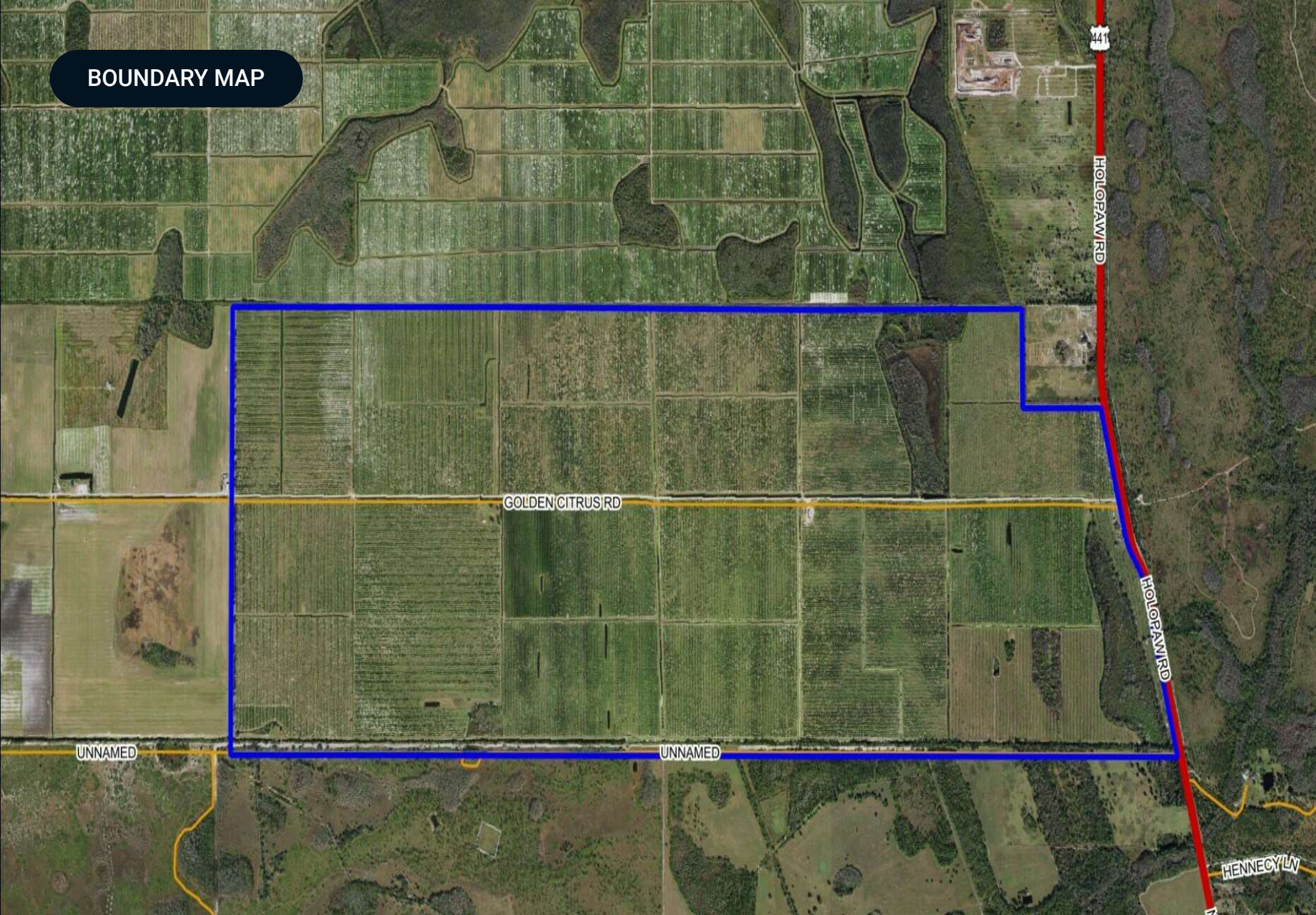
Driving Directions:

- From the intersection of US441 and US192 Travel south 3.6 miles to Golden Citrus Road
- Turning right onto



Map data ©2024 Imagery
©2024 TerraMetrics

BOUNDARY MAP



ADDITIONAL PHOTOS





ONE OF AMERICA'S BEST BROKERAGES



One of America's
Best Brokerages



APEX 2022 Top
National Producer



Most Influential
Business Leaders



Largest Commercial
Real Estate Brokers
in Tampa Bay



Ranked 210 on Inc.
5000 Regional List



For more information visit www.saundersrealestate.com

HEADQUARTERS

1723 Bartow Road
Lakeland, FL 33801
863.648.1528

ORLANDO

605 E Robinson Street,
Suite 410
Orlando, Florida 32801
386.438.5896

NORTH FLORIDA

356 NW Lake City Avenue
Lake City, Florida 32055
352.364.0070

GEORGIA

203 E Monroe Street
Thomasville, Georgia
31792
229.299.8600

ARKANSAS

112 W Center St, Suite 501
Fayetteville, Arkansas
72701
479.582.4113

