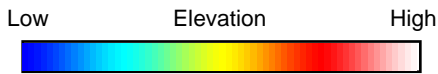
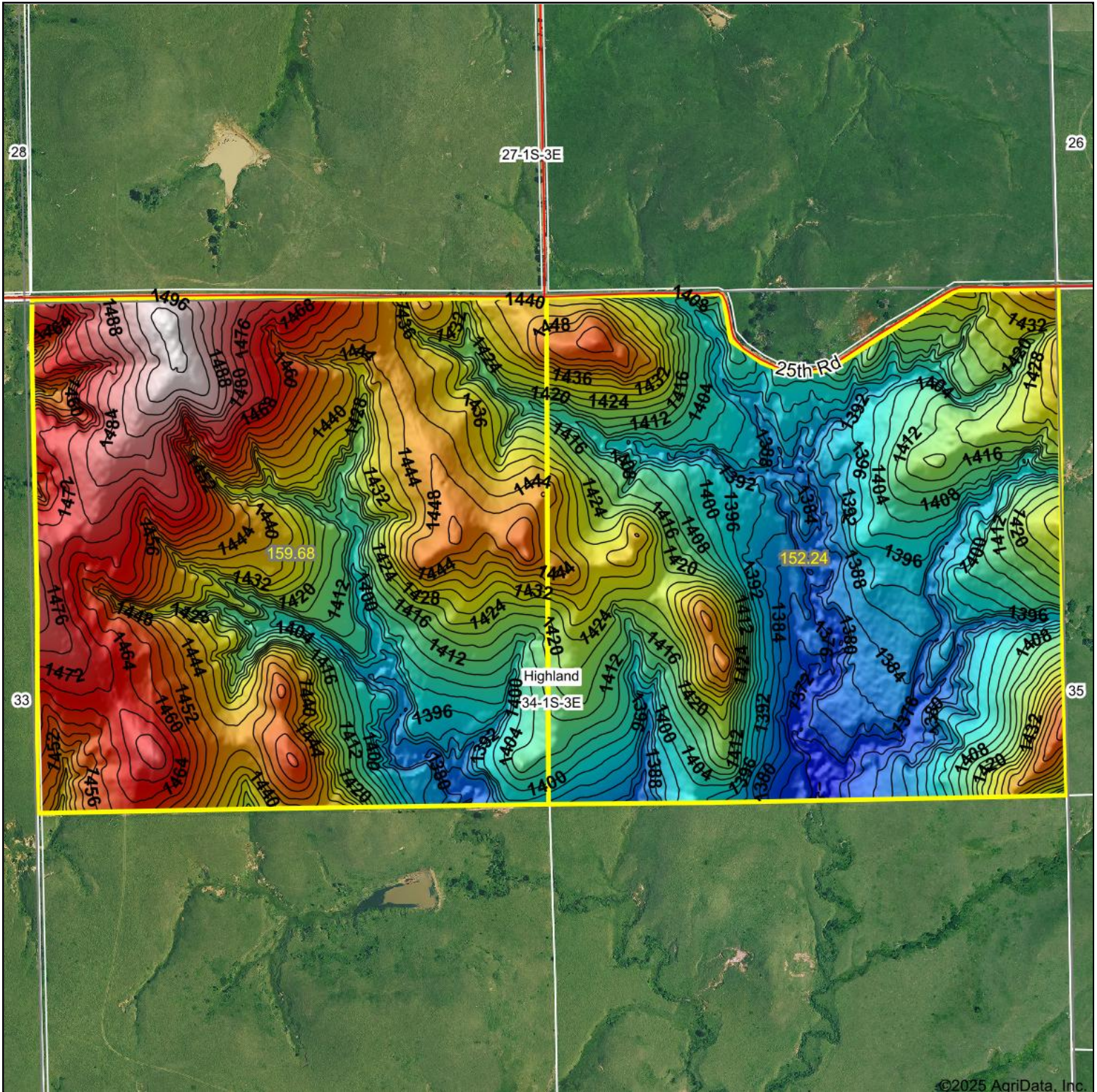


Topography Hillshade



Source: USGS 3 meter dem

Interval(ft): 4

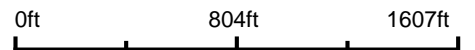
Min: 1,362.4

Max: 1,501.5

Range: 139.1

Average: 1,425.3

Standard Deviation: 30.28 ft



Maps Provided By:



© AgriData, Inc. 2023

www.AgriDataInc.com

Field borders provided by Farm Service Agency as of 5/21/2008.



6/22/2025

34-1S-3E
Washington County
Kansas

Boundary Center: 39° 55' 34.46, -97° 4' 41.14