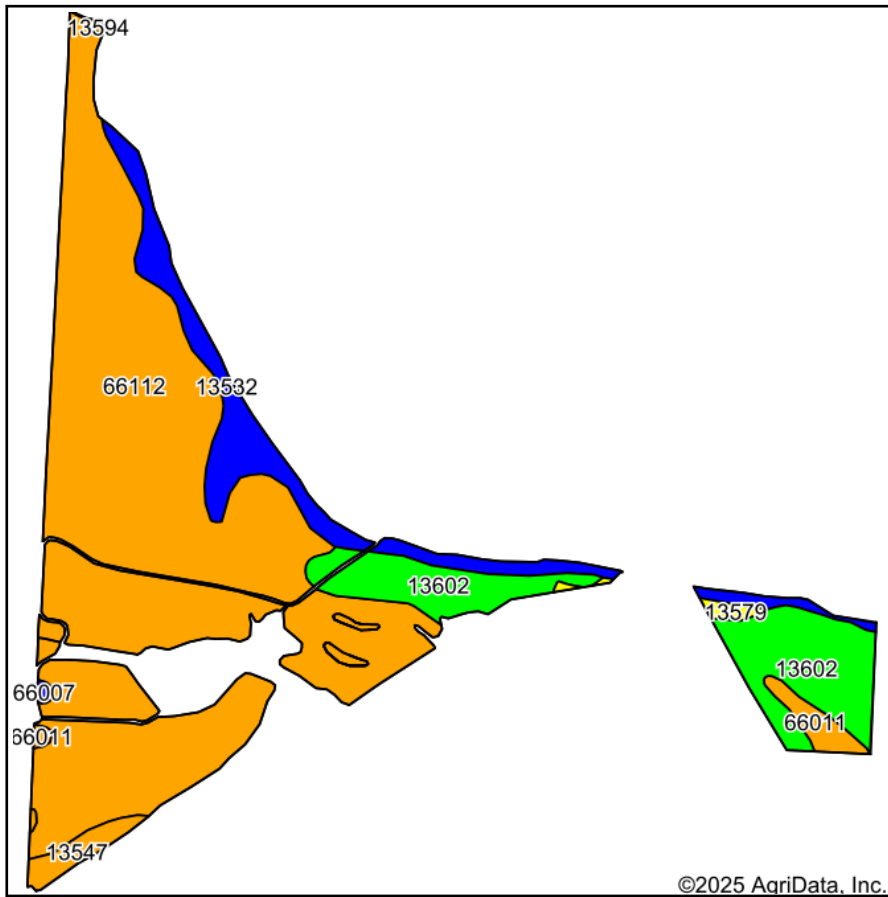
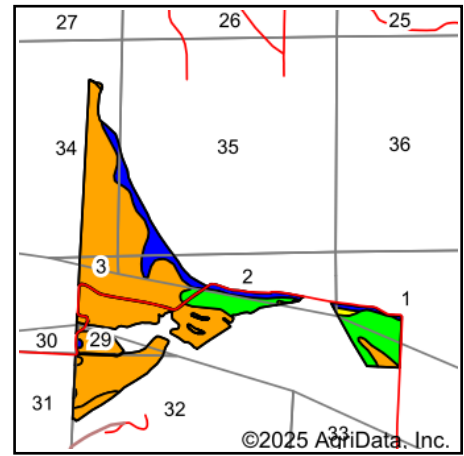


# Soils Map, Tract 2



Soils data provided by USDA and NRCS.



State: **Missouri**  
 County: **Saline**  
 Location: **35-52N-23W**  
 Township: **Grand Pass**  
 Acres: **352.4**  
 Date: **7/14/2025**



Area Symbol: MO195, Soil Area Version: 27

Code	Soil Description	Acres	Percent of field	Non-Irr Class Legend	Restrictive Layer	Soil Drainage	Non-Irr Class *c	Irr Class *c	Range Production (lbs/acre/yr)	*n NCCPI Overall
66112	Waldron silty clay, 0 to 2 percent slopes, occasionally flooded	250.72	71.2%		> 6.5ft.	Somewhat poorly drained	Illw		0	41
13602	Haynie silt loam, 0 to 2 percent slopes, rarely flooded	50.09	14.2%		> 6.5ft.	Moderately well drained	Iw		0	65
13532	Haynie-Waldron complex, 0 to 2 percent slopes, occasionally flooded	36.42	10.3%		> 6.5ft.	Well drained	Ilw		0	53
66011	Moville silt loam, 0 to 2 percent slopes, occasionally flooded	6.05	1.7%		2.2ft. (Strongly contrasting textural stratification)	Somewhat poorly drained	Illw	Ilw	0	62
13547	Levasy silty clay, 0 to 2 percent slopes, occasionally flooded	6.02	1.7%		2.7ft. (Strongly contrasting textural stratification)	Poorly drained	Illw		0	33
13579	Sarpy loamy fine sand, 0 to 4 percent slopes, rarely flooded	2.17	0.6%		> 6.5ft.	Excessively drained	IVs		225	35
66007	Leta silty clay, 0 to 2 percent slopes, occasionally flooded	0.58	0.2%		2.5ft. (Strongly contrasting textural stratification)	Somewhat poorly drained	Ilw		0	52
13594	Waubonsie and Haynie soils, 0 to 2 percent slopes, occasionally flooded	0.35	0.1%		2.1ft. (Strongly contrasting textural stratification)	Moderately well drained	Illw		0	63
Weighted Average							2.62	*-	1.4	*n 45.9

\*n: The aggregation method is "Weighted Average using all components"

\*c: Using Capabilities Class Dominant Condition Aggregation Method

\*- Irr Class weighted average cannot be calculated on the current soils data due to missing data.

Soils data provided by USDA and NRCS.