

Lee Surveying and Mapping Co., Inc.



APPROVED

Land Surveys • Topography • Subdivisions • Construction Layout

117 N. Madriver St.
Bellefontaine OH 43311



Phone: (937) 593-7335
Fax: (937) 593-7444
surveys@lsminc.us

ROSTORFER 72.736 ACRES

Lying in Section 5, Town 3, Range 14, Harrison Township, Logan County, Ohio.

Being all of the remainder of the David J. Rostorfer original 72.06 acre tract, original 5.08 acre tract and all of the 6.446 acre tract as deeded and described in Official Record 1158, Page 608, Parcel I and II and being more particularly described as follows:

Commencing at a stone found at the intersection of County Highway 32 (60 feet wide) and the south line of the northeast quarter of Section 5 at Station 133+41 per Logan County Engineer's Field Book 615, Page 64.

THENCE, with the center-line of County Highway 32, N 05°-00'-00"E, a distance of 598.35 feet to a 5/8 inch iron rod found at the TRUE POINT OF BEGINNING.

THENCE, with the center- line of County Highway 32, N 05°-00'-00"E, a distance of 124.49 feet to a 5/8 inch iron rod found.

THENCE, with the south line of the Dorothy M. Van Buskirk 1.00 acre tract (O.R. 43, Pg. 628), S 85°-00'-11"E, a distance of 242.31 feet to a point referenced by a 5/8 inch iron rod found that bears S 85°-00'-11"E a distance of 0.16 feet, passing a 5/8 inch iron rod set at 30.00 feet.

THENCE, with the east line of said Van Buskirk 1.00 acre tract, the east line of the Robert T. Deal and Linda K. Deal 1.00 acre tract (O.R. 398, Pg. 325), the east line of the Lisa K. Robinson and Lindsay N. Robinson 1.00 acre tract (O.R. 1164, Pg. 671) and the east line of the Aaron E. Pool and Emily L. Pool 0.99 acre tract (O.R. 603, Pg. 537) N 04°-57'-02"E, a distance of 716.70 feet to a 5/8 inch iron rod found.

THENCE, with the south line of the John F. McPherson and Toni McPherson 5.277 acre tract (O.R. 540, Pg. 170,) the south line of the John F.H. McPherson and Toni D.H. McPherson 3.718 acre tract (O.R. 1173, Pg. 127) and the south line of the John F.H. McPherson and Toni D.H. McPherson 24.061 acre tract (O.R. 510, Pg. 696) S 84°-14'-25"E, a distance of 1345.84 feet to a 5/8 inch iron rod found.

THENCE, with the lines of the David J. Rostorfer 11.222 acre tract (O.R. 1181, Pg. 667) the following two courses:

S 32°-50'-24"E, a distance of 691.77 feet to a 5/8 inch iron rod found.

With a transitional curve to the left, an arc distance of 899.05 feet to a 5/8 inch iron rod set (length of spiral is 200 feet, spiral angle is 0°-21'-00", delta angle of 07°-16'-05", delta of curve is 06°-55'-05", radius of curve is 5789.58 feet), the long chord of said transitional curve is S 35°-49'-06"E at a distance of 898.29 feet, passing a 5/8 inch iron rod found at the spiral to curve at an arc length of 200 feet.

THENCE, with the west line of the northeast quarter of Section 5 and a line of the Thomas & Marker Construction Co. 28.871 acre tract (O.R. 359, Pg. 113, Parcel 2), S 06°-02'-20"W, a distance of 213.15 feet to a 10 inch wood post found.

THENCE, with the north line of the southwest quarter of Section 5 and said 28.871 acre tract, N 84°-42'-07"W, a distance of 1283.49 feet to a 5/8 inch iron rod found, passing a 5/8 inch iron rod found at 5.00 feet.



Lee Surveying and Mapping Co., Inc.

Land Surveys • Topography • Subdivisions • Construction Layout

117 N. Madriver St.
Bellefontaine OH 43311



Phone: (937) 593-7335
Fax: (937) 593-7444
surveys@lsminc.us

THENCE, with the west line of said 28.871 acre tract, S 06°-08'-43"W, a distance of 475.94 feet to a 5/8 inch iron rod found.

THENCE, with the lines of the Dayton Power and Light Company 10.19 acre tract (O.R. 329, Pg. 713, Parcel 8) the following three courses:

N 77°-15'-03"W, a distance of 660.40 feet to a 5/8 inch iron rod set.

N 06°-27'-46"E, a distance of 17.10 feet to a 5/8 inch iron rod set.

N 77°-16'-08"W, a distance of 419.63 feet to a 5/8 inch iron rod found.

THENCE, with the east line of the Anthony Hartzler and Judith Hartzler 1.00 acre tract (O.R. 864, Pg. 749) N 06°-34'-43"E, a distance of 194.52 feet to a 3/4 inch iron rod found.

THENCE, with the lines of the William M. Hoon and Michele R. Hoon 0.25 acre tract (O.R. 419, Pg. 233, Tract I), the following two courses:

S 83°-23'-01"E, a distance of 59.98 feet to a 5/8 inch iron rod found.

N 06°-39'-28"E, a distance of 181.51 feet to a 5/8 inch iron rod found.

THENCE, with the east lines of the Elizabeth A. Bickham, Trustee 0.25 acre tract (O.R. 1086, Pg. 770, Tract II) and the east line of the William Douglas Rutherford and Sheila K. Rutherford 0.26 acre tract (O.R. 1171, Pg. 663, Tract II, N 04°-56'-05"E, a distance of 368.82 feet to a 5/8 inch iron rod found.

THENCE, with the north line of said 0.26 acre tract, N 85°-00'-55"W, a distance of 59.88 feet to a 3/4 inch iron rod found.

THENCE, with the Patricia L. Molton 1.00 acre tract (O.R. 1158, Pg. 614) the following two courses:

N 04°-56'-43"E, a distance of 179.99 feet to a 3/4 inch iron rod found.

N 85°-07'-19"W, a distance of 242.46 feet to the point of beginning, passing a MAG nail set at 212.46 feet.

Containing 72.736 acres of which 0.086 acre is in the highway right-of-way.

Property is subject to any and all previous easements and rights-of-way of record.

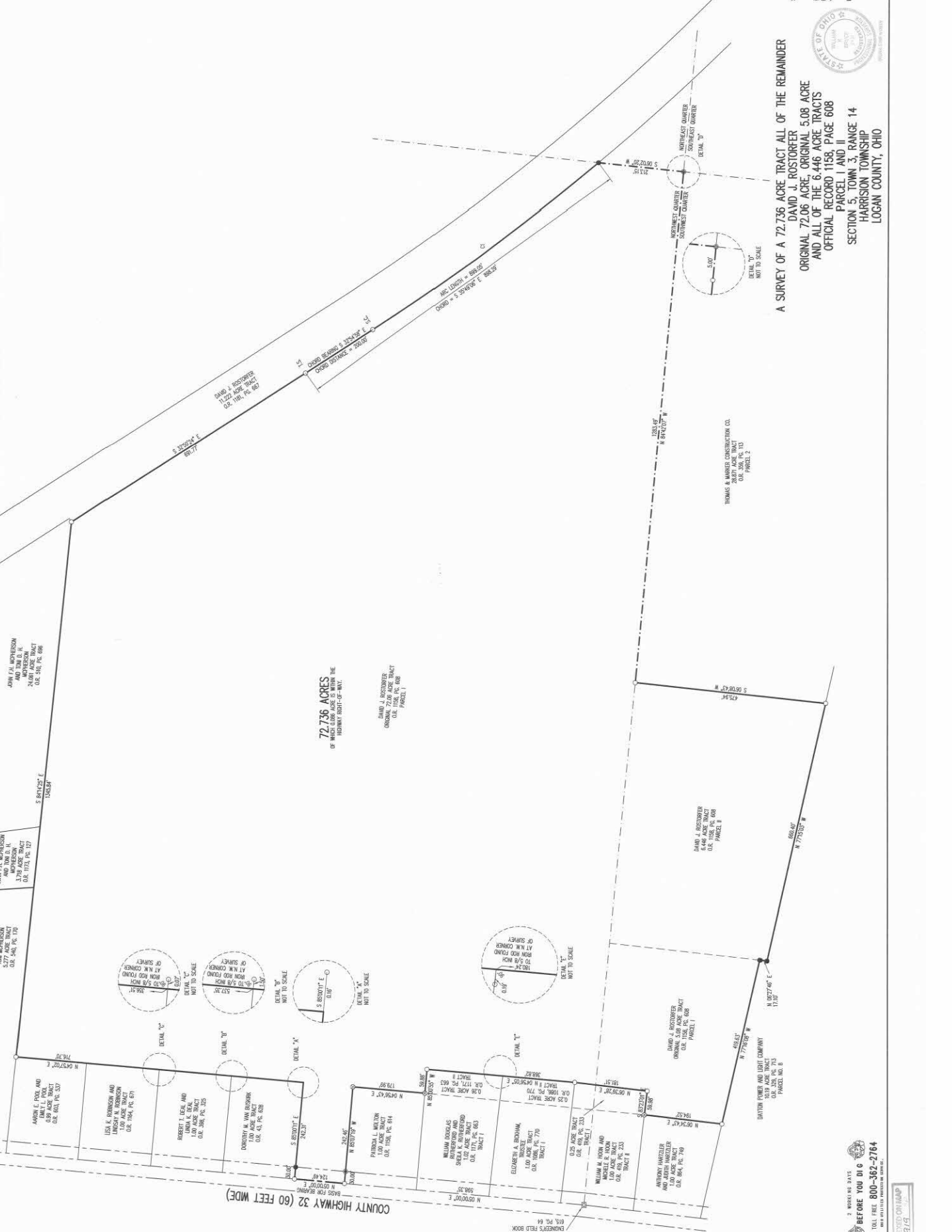
The basis for bearings is the center-line of County Highway 32, being N 05°-00'-00"E, and all other bearings are from angles and distances measured in a field survey by Lee Surveying and Mapping Co., Inc. on June 3, 2015.

Description prepared by:

William K. Bruce
Professional Surveyor 7437
June 3, 2015
Revised June 22, 2015

59270515.DSC





PARCEL 1 AND II
SECTION 5, TOWN 3, RANGE 14
HARRISON TOWNSHIP
LOGAN COUNTY, OHIO

EE SURVEYING & MAPPING CO., INC.
157 North Medlar Street
Bellefontaine, OH 43104
(937) 593-7335
www.lsmc.us
surveys@lsmc.us

 2 WORKING DAYS
BEFORE YOU DIG
TOLL FREE 800-362-2764
800-362-2764. PROTECTS OUR SERVICE.

© 1997 by The McGraw-Hill Companies, Inc.