



887 Memorial Drive, Avon
Park, Florida 33825

User | Investment | Development Opportunity w/
Development Potential/ Townhomes

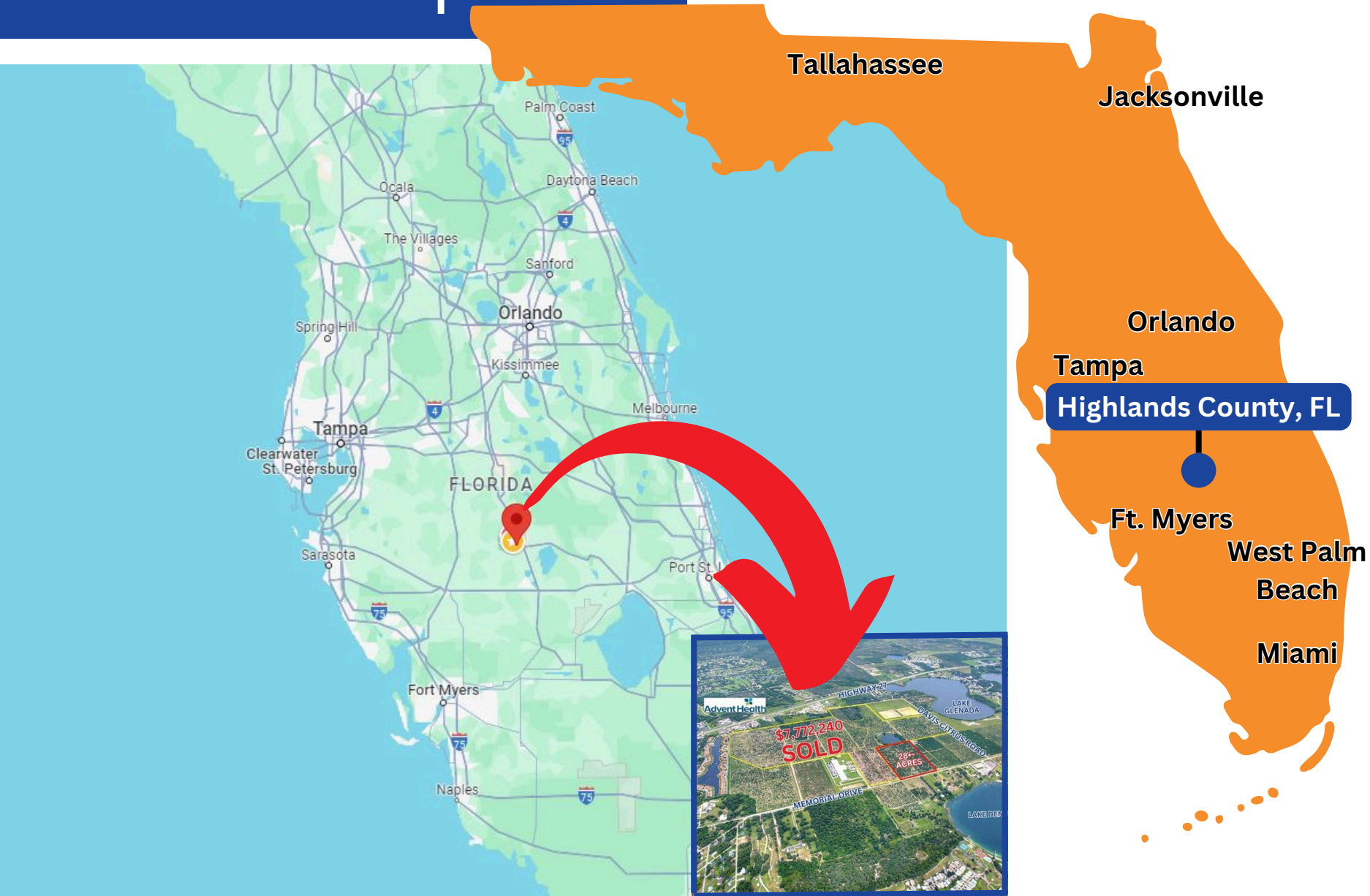


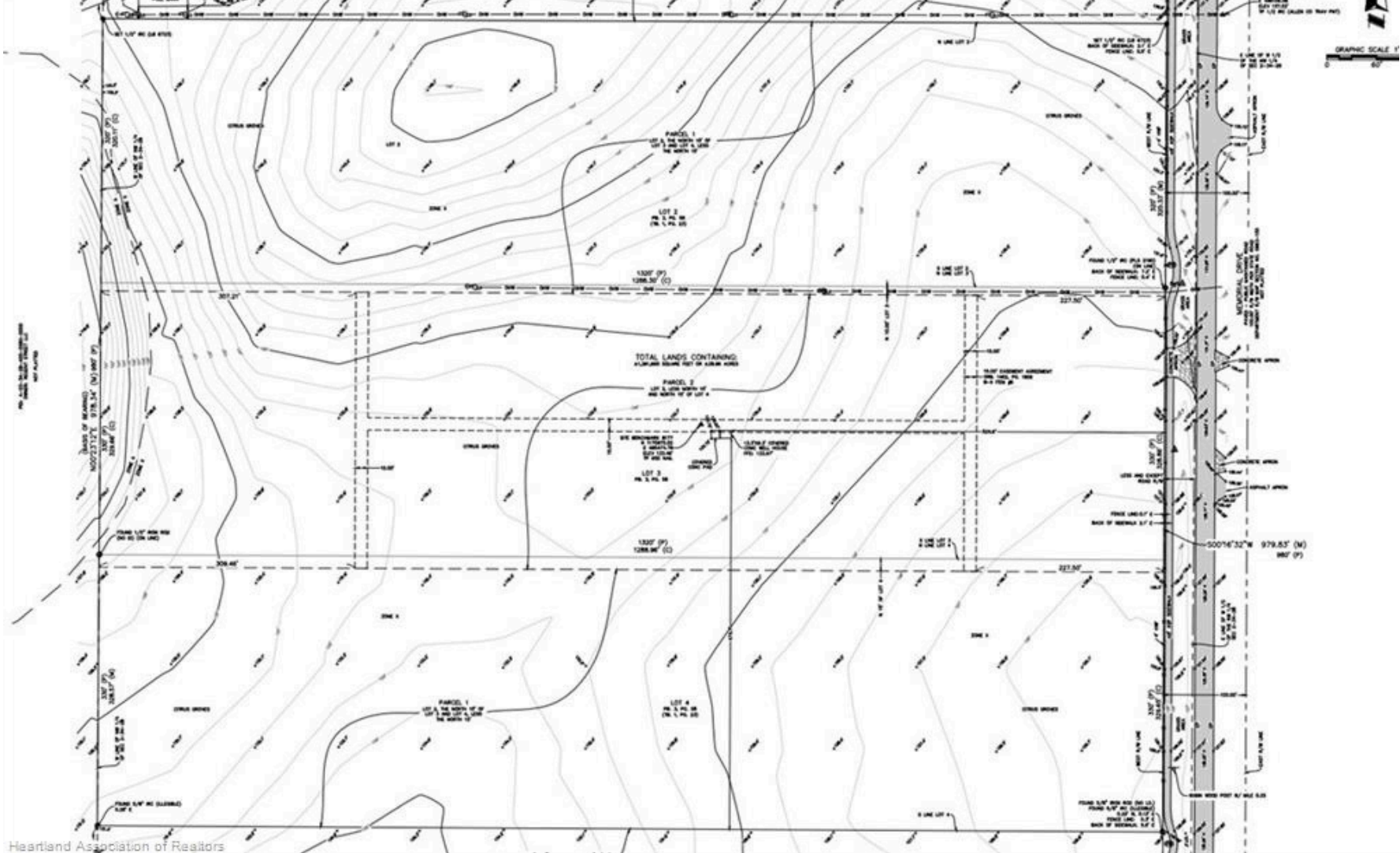
Greg Karlson
Broker/Owner
863 - 381 - 4932



Yezmin Restrepo
Associate
214-797-4439

Area Map





Heartland Association of Realtors

Site Plan Overview

887 Memorial Drive, Avon Park, Florida 33825

Offering Memorandum

Development Highlights

Total Acreage:

- 28.93+-

Utilities::

- Sewer City
- Water City

Zoning:

- Zone EU/RL



Development Order PUD Details:

28.93+-Acres of Prime Lakefront Residential Development Land with Water & Sewer Zone EU/RL for 69+-Units Only \$25,156 per Unit! See preliminary site plans demonstrating the upside potential with topo survey. Don't miss out on developing the Ultimate Private Lakefront Community in Sebring's Most Popular Area for Growth! Also located in Highlands County Enterprise Zone for maximum benefits & tax credits! Seller will consider owner financing with \$300,000 down / non-refundable after short DD to close mid 2025.

Property Aerial

Centrally Located!





Highlands County Overview



“Florida continues to out-pace the nation in growth, growing 2.6 times the rate of the rest of the U.S. With its central location, growing population, low operating costs and dedicated workforce, Highlands County is an ideal location to grow your business.”

- Highlands County Economic Development

Connectivity

More than 86 percent of Florida's population is located within a two-hour radius of Highlands County (over 18 million people). The County is situated in the middle of Florida's extensive multi-modal infrastructure and surrounded by three interstates, commercial airports, an intermodal logistics center and deep water ports. The County's location is also nearly equidistant (about 1.5 hours) to Orlando, Tampa, Fort Myers and West Palm Beach.

Workforce

Highlands County's population, along with a commuting workforce from the surrounding area, provide a labor pool of more than 125,000 dedicated workers. Highlands County is home to South Florida State College and in close proximity to five other colleges and universities. A talent pipeline of more than 22,000 students is available within a one-hour drive and more than 190,000 students are within a two-hour drive.

Affordability

Highlands County offers an advantageous business climate with leaders committed to streamlined services, support programs and low business costs. A recent analysis conducted by Site Selection Group found that Highlands County offers an overall cost savings of 10 to 15 percent compared to nearby metro areas. Highlands also offers an advantage in low labor costs and competitive real estate options.

Lifestyle & Community

Here, employees and residents enjoy the Sunshine State lifestyle envied all over the world, at a much lower cost than other areas. Highlands County's cost of living is about 15 percent lower than the state average. Located along the rolling hills of the Central Florida ridge and lake country, Avon Park, Sebring and Lake Placid offer a quality lifestyle with all the advantages of a close-knit, friendly community. Highlands County is the quintessential hometown.



Top 10 Private Employers



Employer	Employees	Industry
AdventHealth	1,633	Health & Social Services
Walmart	834	Retail
Publix	509	Retail
The Results Company	400	Other Services, Call Center
Highlands Regional Medical Center (HCA)	330	Health & Social Services
Alan Jay Automotive Network	320	Retail Trade
Costa Farms	467	Agriculture
Bowman Steel	228	Structural Steel Contractor
The Palms of Sebring	176	Health & Social Services
Central Florida Healthcare	219	Health & Social Services

For more information and to schedule a tour, please contact:



Greg Karlson

Broker/Owner

863-381-4932

GregAdvantageRealty@gmail.com



Yezmin Restrepo

Associate

214-797-4439

yezmin.restrepo@gmail.com

Offering Memorandum

887 Memorial Drive, Avon Park, Florida 33825



Disclaimer

Information herein is deemed reliable but is not guaranteed. It is up to the parties involved to independently verify all information provided and/or disclosed by real estate agents involved herein, and to seek competent legal, tax and other counsel and advice before they rely on said information. The parties herein understand & accept that Karlson Law Group/Pamela Karlson Attorney has no "affiliated business arrangement" with her spouse's(Greg Karlson) real estate firm Advantage Realty #1 Greg Karlson,LLC. They are husband/wife,represent/bill their client's separately.

743 US Hwy 27 S, Sebring, FL 33870