



Jim Jean Real Estate

352-339-4487



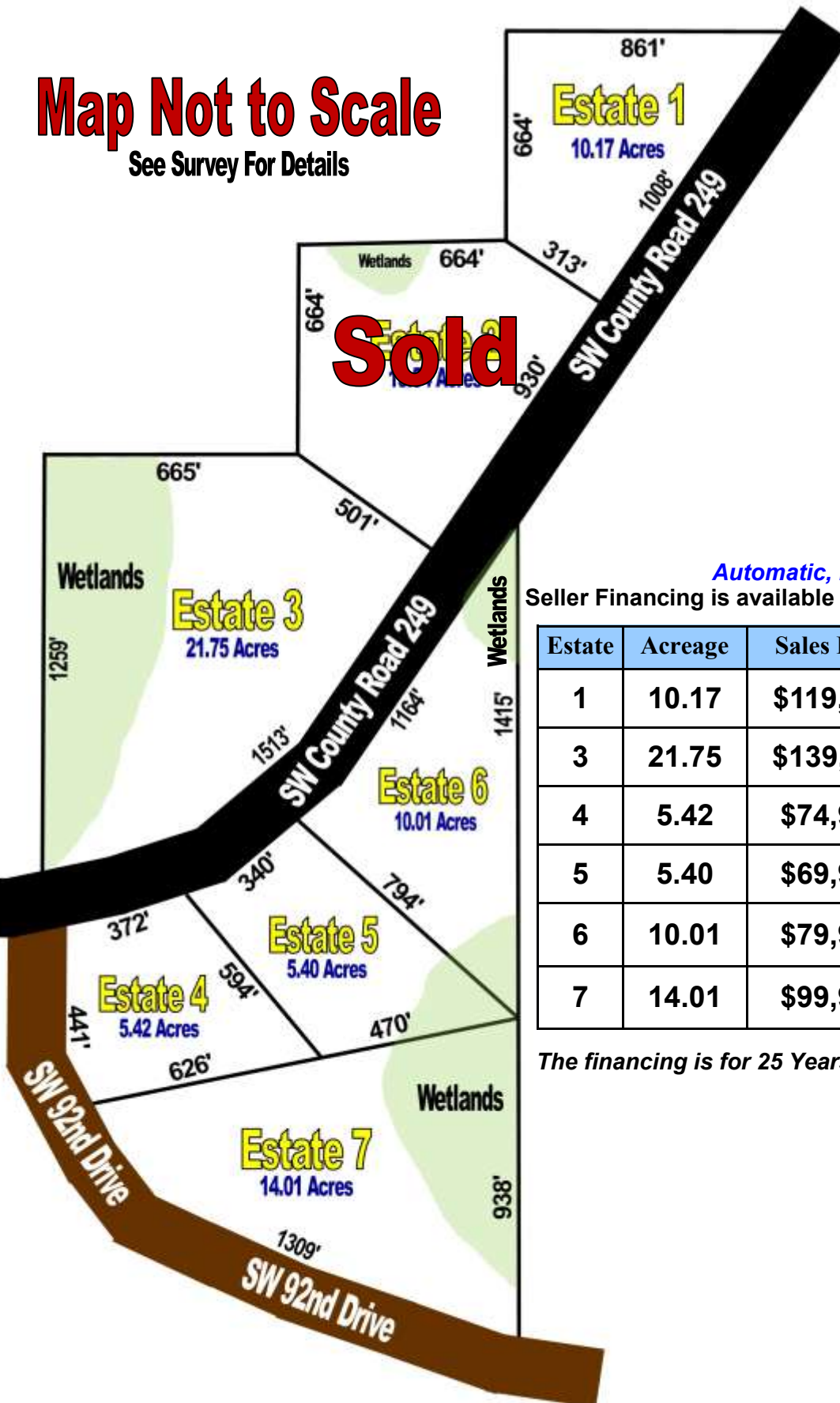
4131 NW 28th Lane, Suite 1, Gainesville, FL 32606 • www.JimJean.com • Cell: 352-339-4487

Southern Estates Sales Plat

Map Not to Scale

See Survey For Details

Sold



Automatic, Non-Qualifying

Seller Financing is available with **NO** Pre-Payment Penalties

Estate	Acreage	Sales Price	Down	Monthly
1	10.17	\$119,995	\$11,995	\$945
3	21.75	\$139,995	\$13,995	\$1,100
4	5.42	\$74,995	\$7,495	\$590
5	5.40	\$69,995	\$6,995	\$550
6	10.01	\$79,995	\$7,995	\$630
7	14.01	\$99,995	\$9,995	\$790

The financing is for 25 Years at a fixed interest rate of 9.50%