



RESIDENTIAL

STUNNING NEW CONSTRUCTION HOME ON 10 AG EXEMPT ACRES

178 PR 4590 – Boyd, TX



STEPHEN
REICH GROUP
WILLIAMS TREW REAL ESTATE

Williamstrew[☆]
A DIVISION OF EBBY HALLIDAY REAL ESTATE, INC.

LISTED BY STEPHEN REICH GROUP OF WILLIAMS TREW REAL ESTATE

PROPERTY SUMMARY

DESCRIPTION

Stunning new construction 4 bed, 3 bath custom brick home on 10 ag exempt acres! This thoughtfully designed home features his & her closets with built-ins, a butler's pantry, propane stove, real wood-burning fireplace, and quartz countertops in the kitchen, primary bath, and pantry. Enjoy peaceful views from large windows overlooking the beautiful treed property and stocked pond. Granite surfaces in laundry and secondary baths add a touch of elegance. The oversized 2-car garage includes openers, and there's an unfinished bonus room ready for your vision. Outdoors, horse lovers will appreciate the 36x48 barn with five 12x12 stalls with runs, a 12x24 tack room, and an arena pad ready for use. A private well, septic system, and a 1-year transferable builder's warranty complete the package. Don't miss this rare opportunity to own a turn-key ranch property in a tranquil country setting! Pictures will be updated during completion.

LOCATION

CITY	Boyd	List Price	\$1,590,000
County	Wise	Lot Size	10.10 acres
Schools	Boyd ISD	Utilities	Septic, Well, Propane
Driving Directions	From Jacksboro Hwy, go north on S Main St. Left on FM 2123. Right on PR 4590. House will be on the right.		

OFFER SUMMARY

HIGHLIGHTS

2,670 SF | 4 BEDS | 3 BATHS

12X24 TACK ROOM

36X48 BARN

ARENA PAD READY FOR USE

FIVE 12X12 STALLS WITH RUNS

PRIVATE WELL & SEPTIC SYSTEM

LISTING PRESENTED BY:



STEPHEN REICH
817-597-8884
stephen.reich@williamstrew.com



TAMMY ROKUS
817-694-8019
tammy.rokus@williamstrew.com



PROPERTY WEBSITE LINK:
stephenreichgroup.com/20949157



PROPERTY PHOTOS



TAMMY ROKUS – 817.694.8019
STEPHEN REICH – 817.597.8884



WilliamsTrew
A DIVISION OF EBBY HALLIDAY REAL ESTATE, INC.

PROPERTY PHOTOS

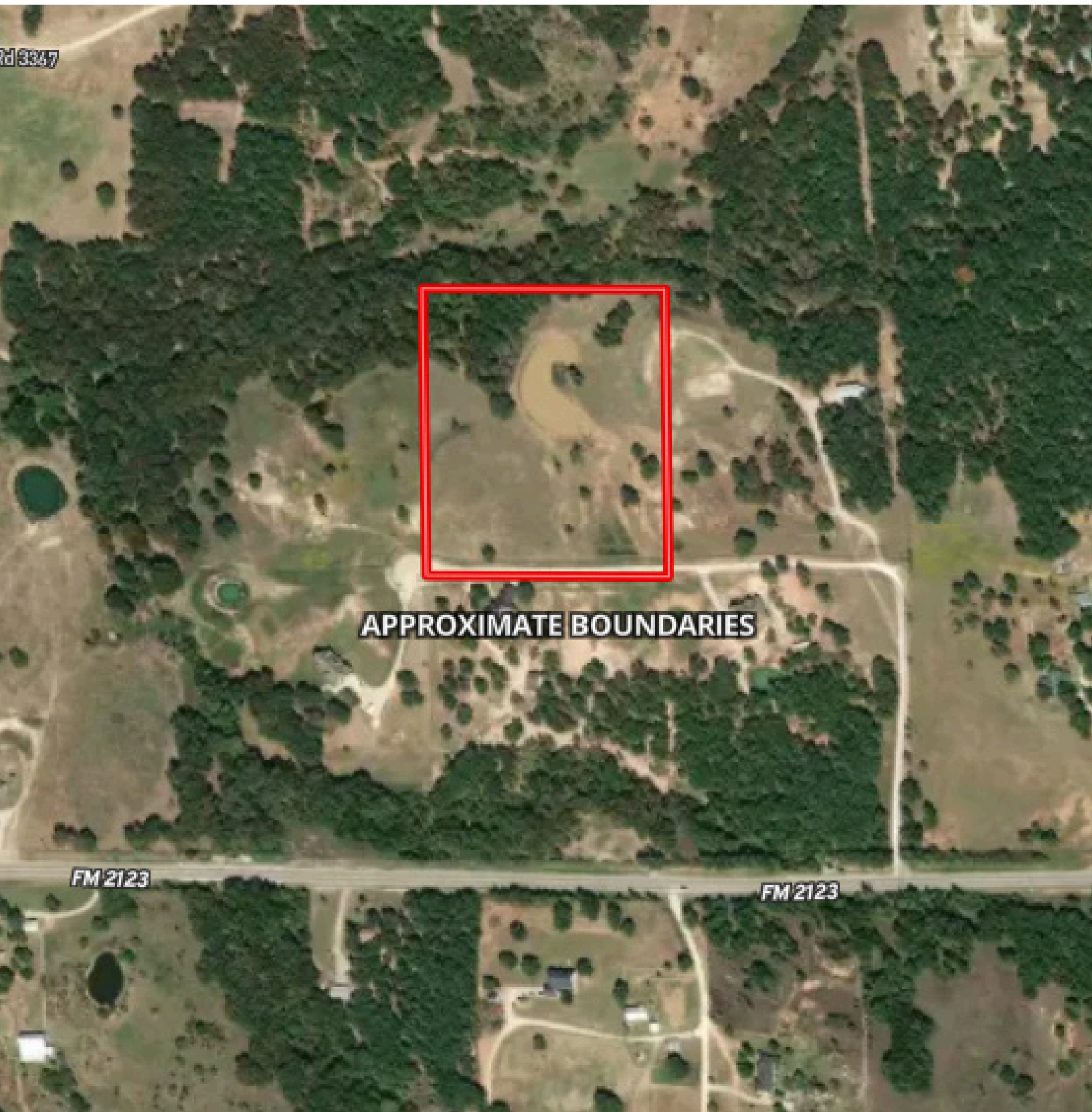


TAMMY ROKUS – 817.694.8019
STEPHEN REICH – 817.597.8884



WilliamsTrew[☆]
A DIVISION OF EBBY HALLIDAY REAL ESTATE, INC.

AERIAL MAP

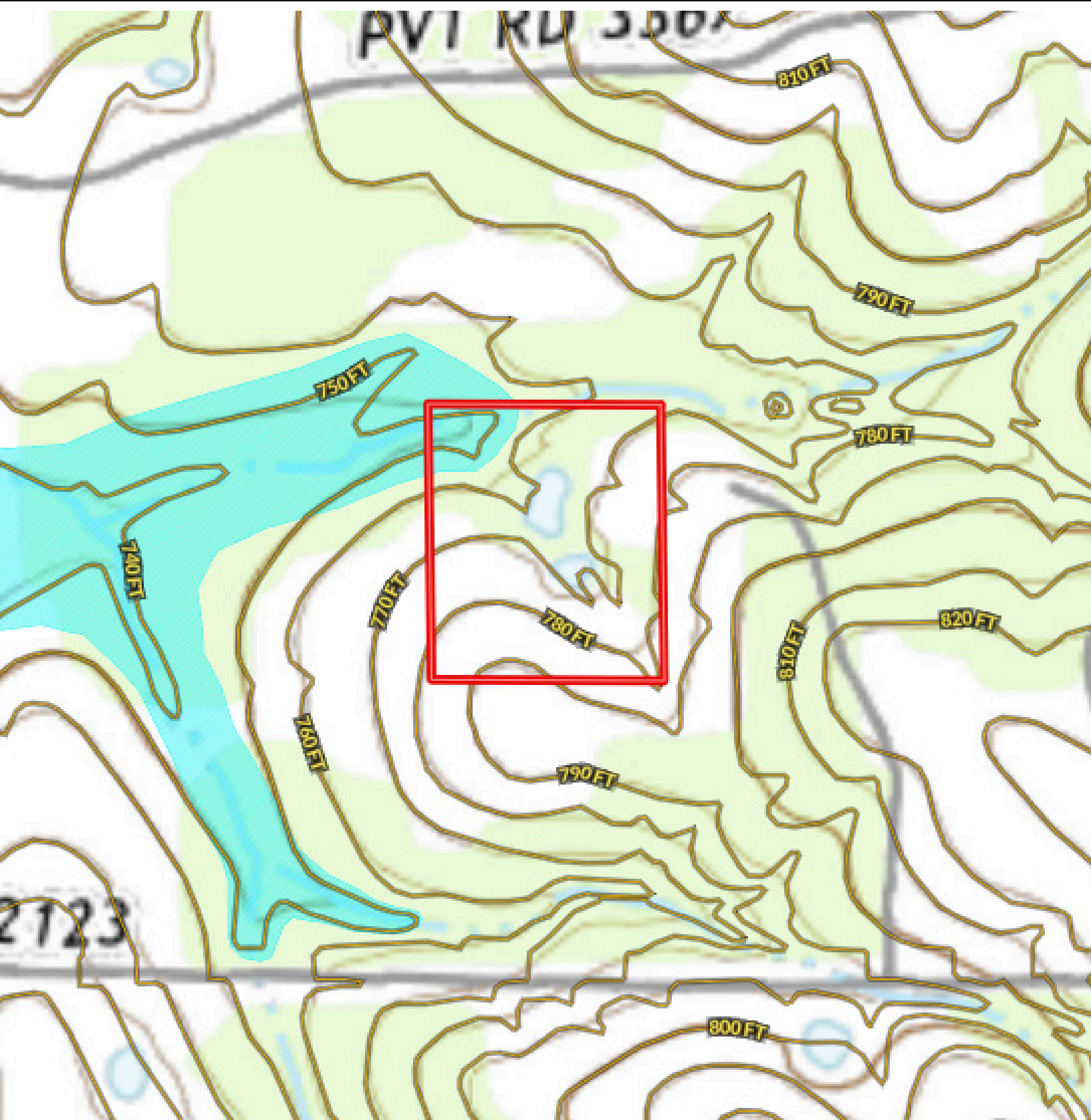


TAMMY ROKUS – 817.694.8019
STEPHEN REICH – 817.597.8884



WilliamsTrew[☆]
A DIVISION OF EBBY HALLIDAY REAL ESTATE, INC.

CONTOUR LINES & FLOODPLAIN



TAMMY ROKUS – 817.694.8019
STEPHEN REICH – 817.597.8884

