


FARMLAND FOR SALE BUSEY FARM BROKERAGE



Qualified
Opportunity
Zone

**JEAN NOVELLI TRUST
BOWDRE TOWNSHIP
DOUGLAS COUNTY, IL
203.55 +/- TAXABLE ACRES**

CONTACT INFORMATION



KEITH CUNNINGHAM, LISTING BROKER

217-351-2250 (OFFICE)

217-202-3962 (CELL)

keith.cunningham@busey.com

STEVE MYERS, DESIGNATED MANAGING BROKER

309-962-2901 (OFFICE)

309-275-4402 (CELL)

steve.myers@busey.com

busey.com 3002 W. Windsor Rd., Champaign, IL 61822

LISTING PRICE

\$13,500.00/ ACRE

203.55 +/- Acres @ \$13,500.00/Acre

\$2,747,925.00

Busey.com/farmsforsale

Busey FARM
BROKERAGE

Disclaimer: The information contained in this brochure is considered accurate. It is subject to verification and no liability for errors or omissions is assumed. There are no warranties, expressed, or implied, as to the information herein contained, and it is recommended that an independent inspection of the property be made by all buyers.
Agency: Busey Farm Brokerage, a division of Busey Bank, its agents and representatives, are agents of the Seller.

FARMLAND FOR SALE

JEAN NOVELLI TRUST - DOUGLAS COUNTY, IL

203.55 +/- TAXABLE ACRES

LOCATION

From Illinois Route 130 go East on County Road 600N approximately 2 miles. Turn East onto County Road 575N and continue approximately 1 mile.

Or

From Illinois Route 133 go North on County Road 1775E for approximately 2.5 miles then East on County Road 450N ½ mile.

GPS Coordinates: 39.72750, 88.12959

DOUGLAS COUNTY FSA DATA

Farm # 496 Tract # 2095

Total Acres: 206.07 Cropland Acres: 186.12

Corn Base Acres: 80.98 Soybean Base Acres: 86.92

Farm Program: ARC County - Corn and Soybean

Price Loss Coverage (PLC) Yields

Corn Yield: 144

Soybean Yield: 40

LEASE/POSSESSION

Farm is under a 50/50 crop share lease for the 2026 crop year. Please contact the broker for further information regarding the lease.

REAL ESTATE TAX INFORMATION

Parcel ID #	Acres	2024 Assessed Value	2024 Taxes Payable 2025
03-10-30-200-001	80.00	\$40,237.00	\$3,087.64
03-10-19-400-004	78.734	\$33,423.00	\$2,532.98
03-10-19-400-003	40.00	\$16,863.00	\$1,277.96
03-10-19-200-004	4.82	\$1,607.00	\$121.80

KEITH CUNNINGHAM, LISTING BROKER

217-351-2250

keith.cunningham@busey.com

LEGAL DESCRIPTION

The West ½ of the Southwest ¼ and the Southeast ¼ of the Southeast ¼ and a strip of land in the Southwest ¼ of the Southwest ¼ all in Section 19 and the West ½ of the Northeast ¼ in Section 30 all in Township 15 North, Range 10E, Bowdre Township, Douglas County, Illinois, consisting of 203.554 acres more or less. The building site, consisting of 1.266 acres, is not a part of this offering.

FARM PRODUCTION

	Corn	Soybean
7-year Average	158.0	45.1*

**Includes specialty crops*

SOIL TEST RESULTS

2018 pH: 5.8 P: 48.2 lbs/ac K: 305.3 lbs/ac

MINERAL RIGHTS

All mineral rights owned by seller, if any, will be transferred to the buyer.

ADDITIONAL INFORMATION

Farm has 15.74 acres of CRP waterway that generates \$3,006.50 annually with an expiration date of 09/30/2031.

44.34 +/- acres are currently in pasture but have previously been in row crop production. Fencing is owned by current tenant and will be removed prior to closing.

18.39 +/- acres are timber.

11,000-bushel grain bin in good condition

IRS Opportunity Zone-Contact broker for details.

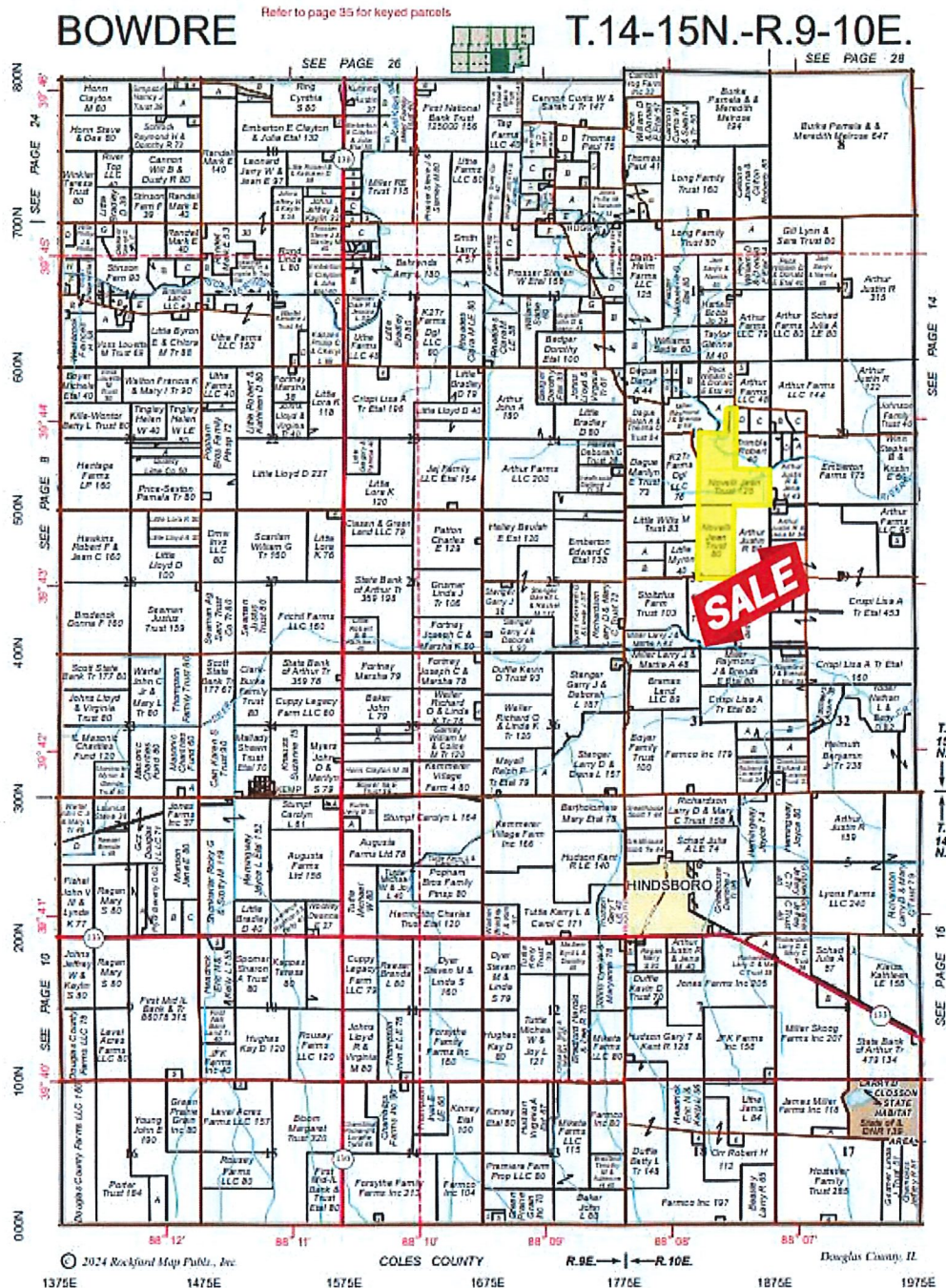
Busey FARM BROKERAGE

Disclaimer: The information contained in this brochure is considered accurate. It is subject to verification and no liability for errors or omissions is assumed. There are no warranties, expressed, or implied, as to the information herein contained, and it is recommended that an independent inspection of the property be made by all buyers.
Agency: Busey Farm Brokerage, a division of Busey Bank, its agents and representatives, are agents of the Seller.

FARMLAND FOR SALE

JEAN NOVELLI TRUST - DOUGLAS COUNTY, IL

203.55 +/- TAXABLE ACRES



Reprinted with permission of Rockford Map Publishers, Inc.

KEITH CUNNINGHAM, LISTING BROKER
 217-351-2250
keith.cunningham@busey.com

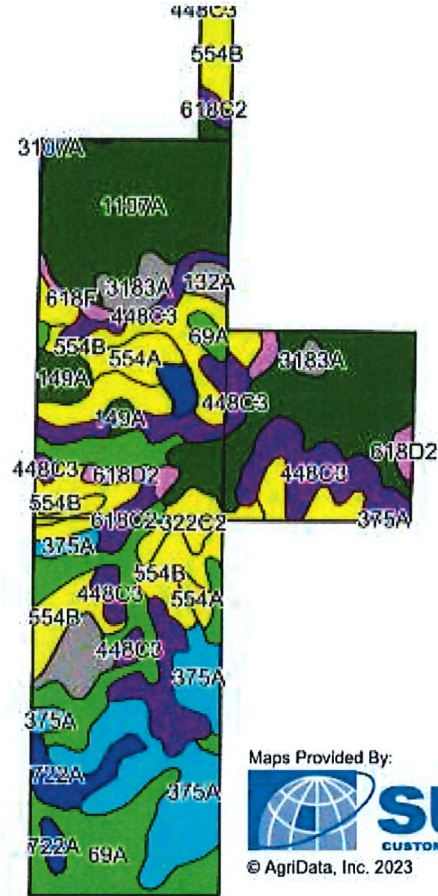
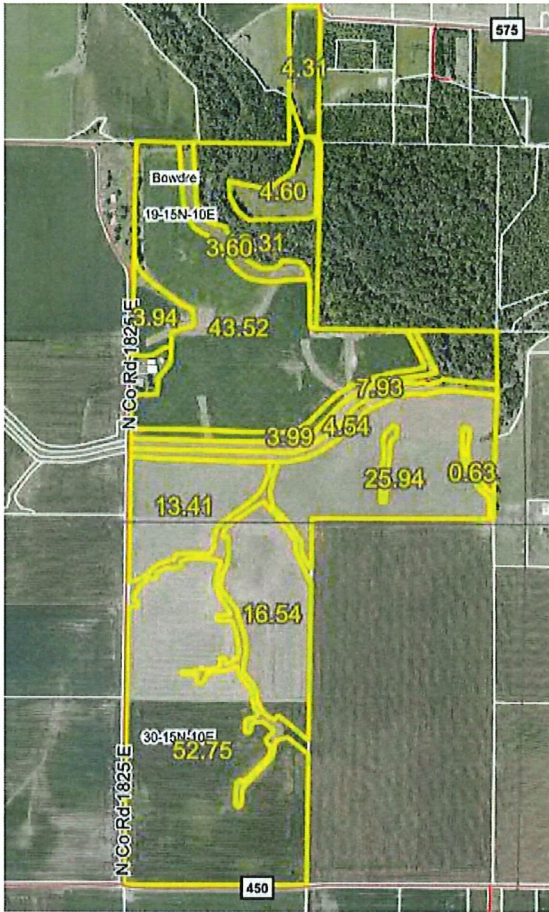


Disclaimer: The information contained in this brochure is considered accurate. It is subject to verification and no liability for errors or omissions is assumed. There are no warranties, expressed, or implied, as to the information herein contained, and it is recommended that an independent inspection of the property be made by all buyers.
 Agency: Busey Farm Brokerage, a division of Busey Bank, its agents and representatives, are agents of the Seller.

FARMLAND FOR SALE

JEAN NOVELLI TRUST - DOUGLAS COUNTY, IL

203.55 +/- TAXABLE ACRES



Maps Provided By:



© AgriData, Inc. 2023

www.AgriDataInc.com

Soil Code	Soil Description	Acres	Percent of Field	IL State Productivity Index Legend	Corn Bu/A	Soybean Bu/A	Crop Productivity Index for optimum management
1107A	Sawmill silty clay loam	52.28	25.3%		190	60	140
554B	Kernan Silt Loam	31.78	15.4%		151	50	112
69A	Milford Silty Clay Loam	31.19	15.1%		171	57	128
448C3	Mona Loam	27.66	13.4%		138	44	101
375A	Rutland Silt Loam	22.24	10.8%		180	58	133
554A	Kernan Silt Loam	7.30	3.5%		153	50	113
722A	Drummer-Milford Silty Clay Loam	7.14	3.5%		186	61	138
132A	Starks Silt Loam	5.83	2.8%		163	51	119
3183A	Shaffton Silt Loam	4.37	2.1%		158	52	118
322C2	Russell Silt Loam	4.18	2.0%		149	47	108
618D2	Senachwine Silt Loam	4.06	2.0%		127	41	93
149A	Brenton Silt Loam	3.78	1.8%		195	60	141
618C2	Senachwine Silt Loam	3.14	1.5%		136	44	100
618F	Senachwine Silt Loam	1.23	0.6%		102	33	75
3107A	Sawmill Silty Clay Loam	0.45	0.2%		189	60	139
Weighted Average					166.9	53.9	123.3

KEITH CUNNINGHAM, LISTING BROKER
217-351-2250
keith.cunningham@busey.com



Disclaimer: The information contained in this brochure is considered accurate. It is subject to verification and no liability for errors or omissions is assumed. There are no warranties, expressed, or implied, as to the information herein contained, and it is recommended that an independent inspection of the property be made by all buyers.
Agency: Busey Farm Brokerage, a division of Busey Bank, its agents and representatives, are agents of the Seller.

FARMLAND FOR SALE

JEAN NOVELLI TRUST - DOUGLAS COUNTY, IL

203.55 +/- TAXABLE ACRES



11,000-bushel grain bin with dryer.



Middle section of farm, currently in pasture/hay ground.



Aerial view looking North to timber with access from the North.

KEITH CUNNINGHAM, LISTING BROKER
217-351-2250
keith.cunningham@busey.com

Busey FARM
BROKERAGE

Disclaimer: The information contained in this brochure is considered accurate. It is subject to verification and no liability for errors or omissions is assumed. There are no warranties, expressed, or implied, as to the information herein contained, and it is recommended that an independent inspection of the property be made by all buyers.
Agency: Busey Farm Brokerage, a division of Busey Bank, its agents and representatives, are agents of the Seller.