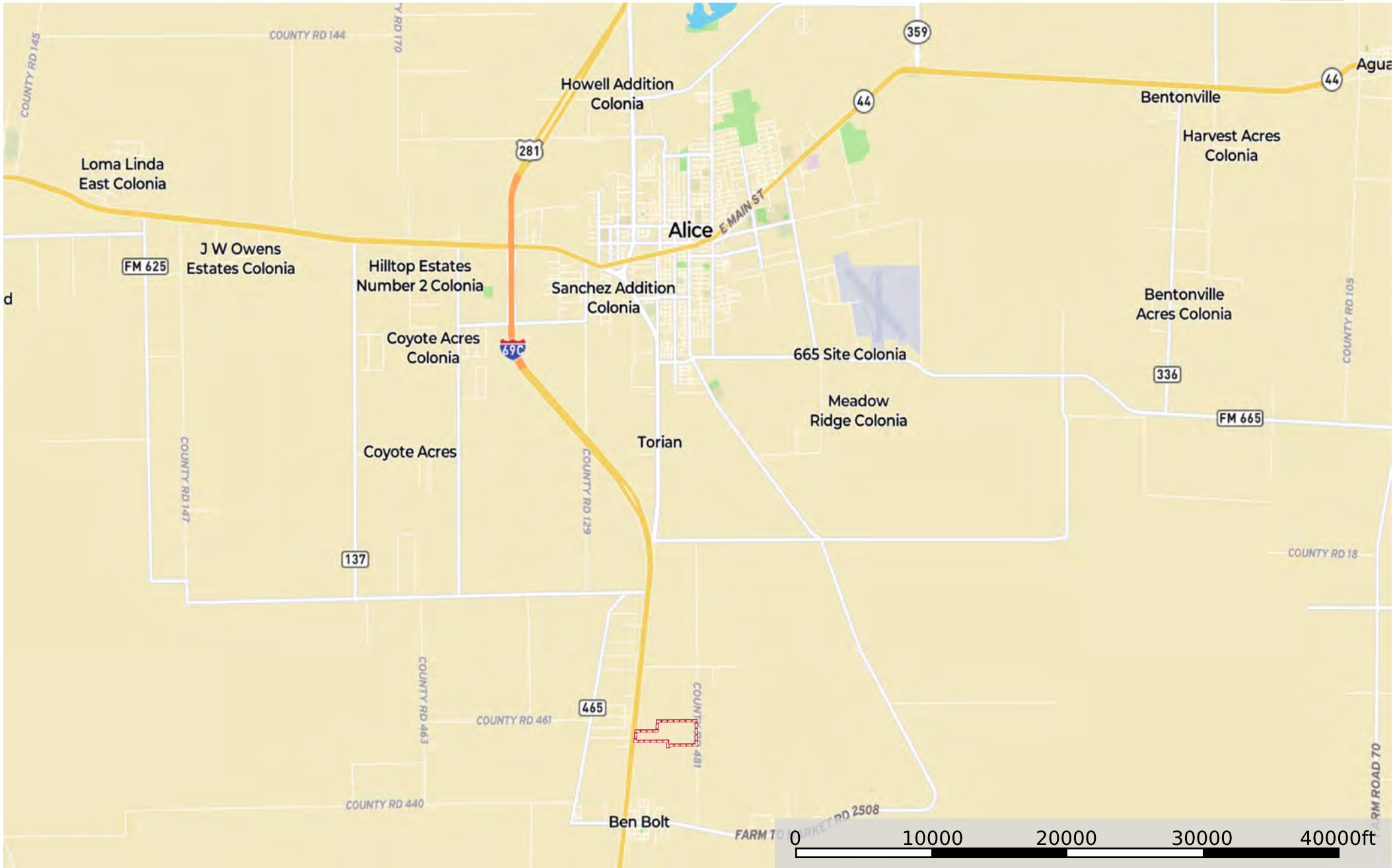
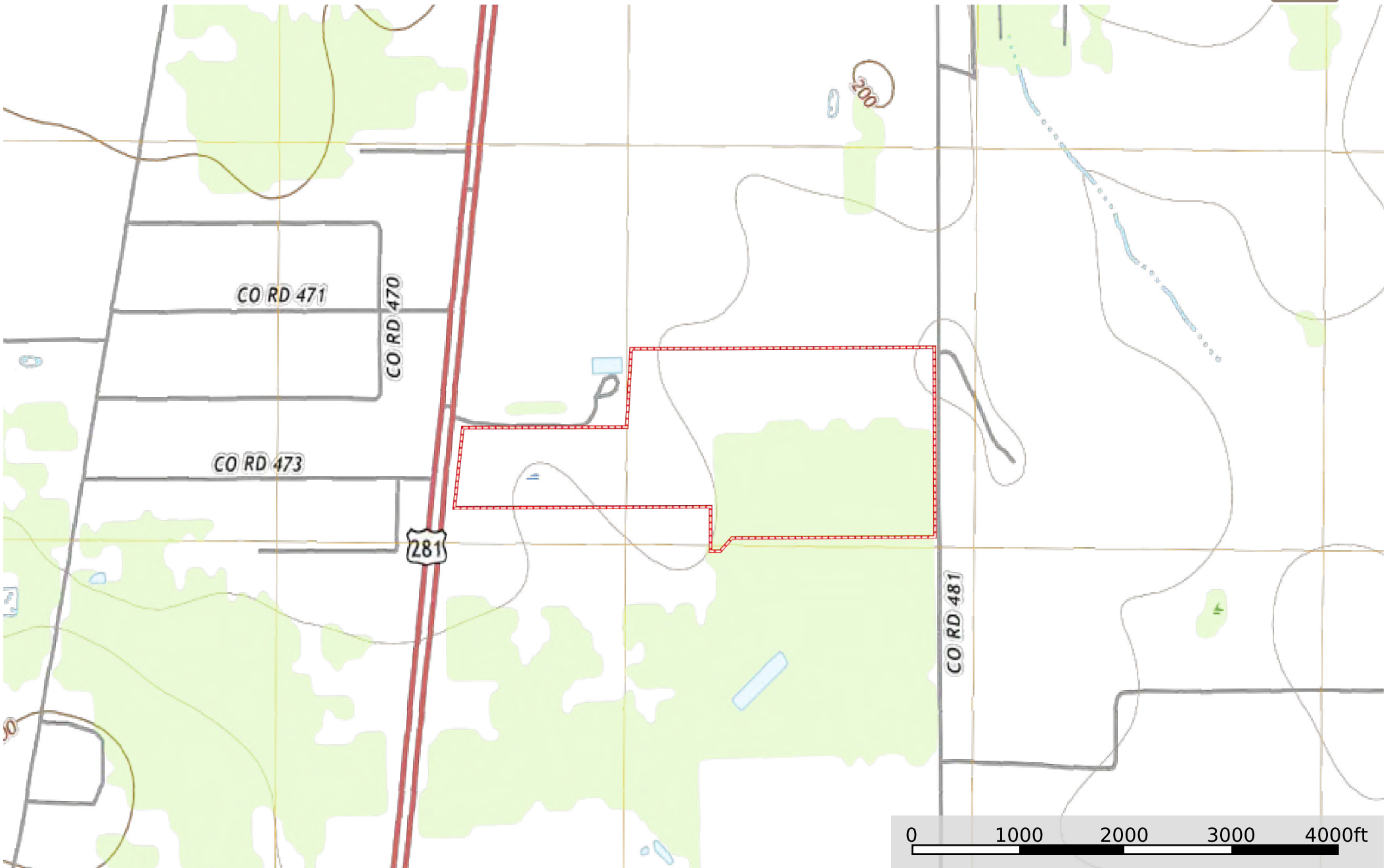




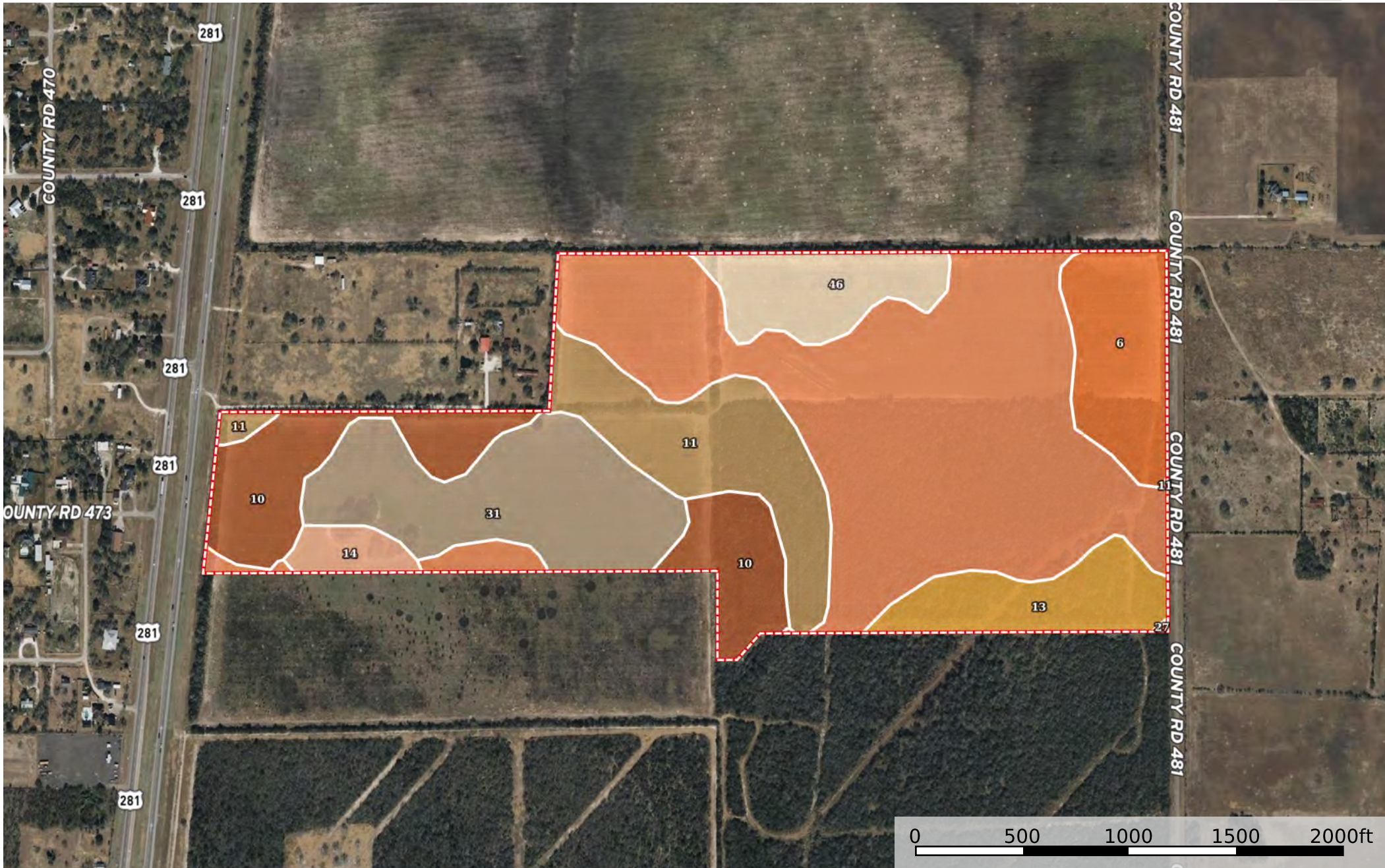
El Rayo Ranch

Jim Wells County, Texas, 124.21 AC +/-





 Boundary



Boundary

Boundary 123.11 ac

SOIL CODE	SOIL DESCRIPTION	ACRES	%	CPI	NCCPI	CAP
27	Opelika fine sandy loam	50.76	41.23	0	40	3s
31	Papalote fine sandy loam, 0 to 1 percent slopes	17.28	14.04	0	46	2e
10	Delfina fine sandy loam, 0 to 2 percent slopes	14.57	11.83	0	41	3e
11	Delfina fine sandy loam, 1 to 3 percent slopes	14.1	11.45	0	41	3e
6	Czar fine sandy loam, 1 to 3 percent slopes	9.04	7.34	0	46	2e
13	Banquete clay, 0 to 1 percent slopes	7.7	6.25	0	40	2w
46	Runge fine sandy loam, 0 to 1 percent slopes	7.39	6.0	0	48	2c
14	Edroy clay, 0 to 1 percent slopes, occasionally ponded	2.27	1.84	0	8	6w
TOTALS		123.1 1(*)	100%	-	41.41	2.72

(*) Total acres may differ in the second decimal compared to the sum of each acreage soil. This is due to a round error because we only show the acres of each soil with two decimal.

