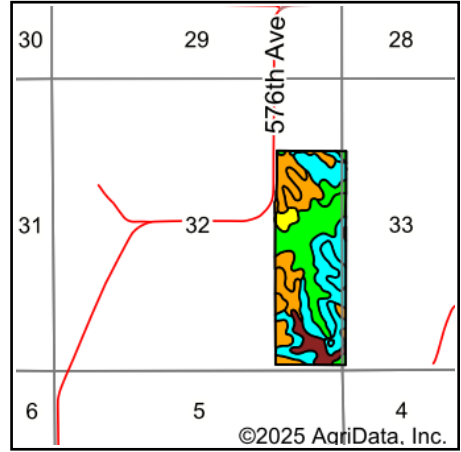
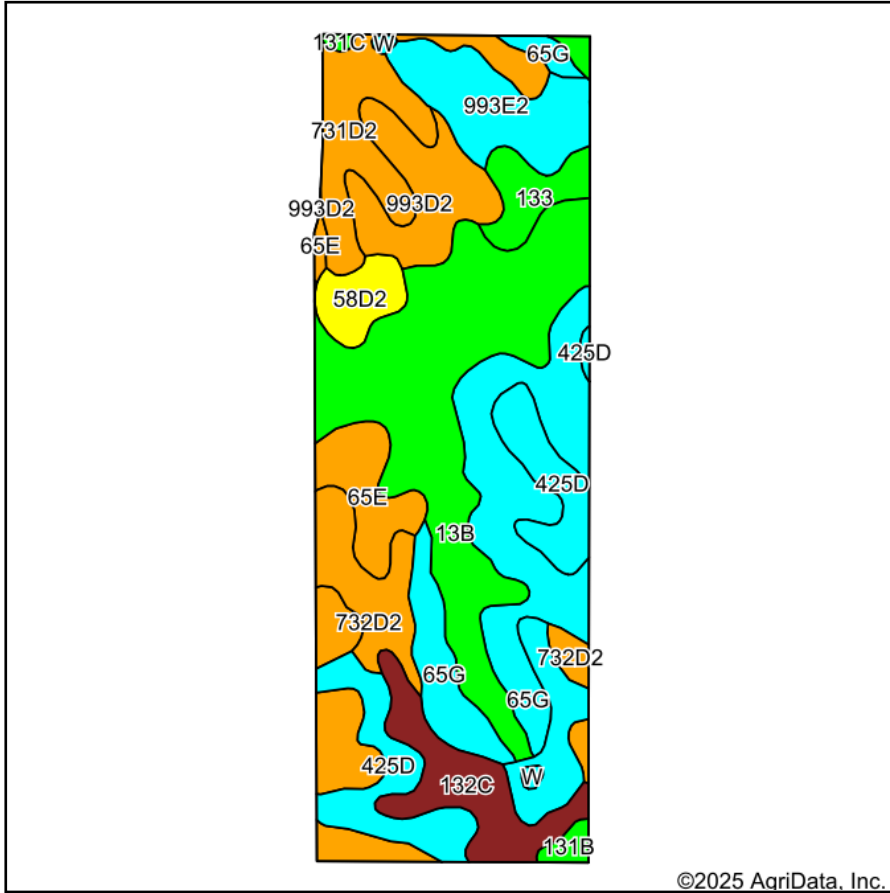


Soils Map

Boundary Lines are Approximate



State: **Iowa**
 County: **Monroe**
 Location: **32-73N-18W**
 Township: **Union**
 Acres: **115**
 Date: **11/12/2025**



Soils data provided by USDA and NRCS.

Area Symbol: IA135, Soil Area Version: 33

Code	Soil Description	Acres	Percent of field	CSR2 Legend	Non-Irr Class *c	CSR2**	CSR	*n NCCPI Corn	*n NCCPI Soybeans	
13B	Olmitz-Colo-Vesser complex, 2 to 5 percent slopes	25.85	22.6%		IIw	82	60	70	71	
65G	Lindley loam, 18 to 40 percent slopes	19.67	17.1%		VIIe	6	5	21	11	
65E	Lindley loam, 14 to 18 percent slopes	10.40	9.0%		VIe	33	30	71	60	
425D	Keswick loam, 9 to 14 percent slopes	10.20	8.9%		IVe	8	16	62	48	
731D2	Pershing silty clay loam, 9 to 14 percent slopes, moderately eroded	8.75	7.6%		IVe	38	31	63	53	
993E2	Gara-Armstrong loams, 14 to 18 percent slopes, moderately eroded	7.71	6.7%		VIe	28	5	65	49	
993D2	Gara-Armstrong loams, 9 to 14 percent slopes, moderately eroded	7.10	6.2%		IVe	35	20	66	48	
132C	Weller silt loam, 5 to 9 percent slopes	7.00	6.1%		IIIe	59	44	85	73	
732D2	Weller silty clay loam, 9 to 14 percent slopes, moderately eroded	6.50	5.7%		IVe	34	28	78	63	
424E2	Lindley-Keswick loams, 14 to 18 percent slopes, moderately eroded	3.94	3.4%		VIe	24	5	59	46	
133	Colo silty clay loam, heavy till, 0 to 2 percent slopes, occasionally flooded	3.59	3.1%		IIw	78	85	94	86	
58D2	Douds loam, heavy loess, 9 to 14 percent slopes, moderately eroded	2.93	2.5%		IVe	44	28	81	63	
131B	Pershing silt loam, 2 to 5 percent slopes	0.74	0.6%		IIIe	70	67	74	59	
W	Water	0.38	0.3%			0	0			
131C	Pershing silt loam, 5 to 9 percent slopes	0.24	0.2%		IIIe	65	49	72	58	
Weighted Average						*-	40.6	30.7	*n 61.7	*n 52.2

Soils data provided by USDA and NRCS.

Maps Provided By:



© AgriData, Inc. 2023

www.AgriDataInc.com

**IA has updated the CSR values for each county to CSR2.

*n: The aggregation method is "Weighted Average using all components"

*c: Using Capabilities Class Dominant Condition Aggregation Method

*- Non Irr Class weighted average cannot be calculated on the current soils data due to missing data.