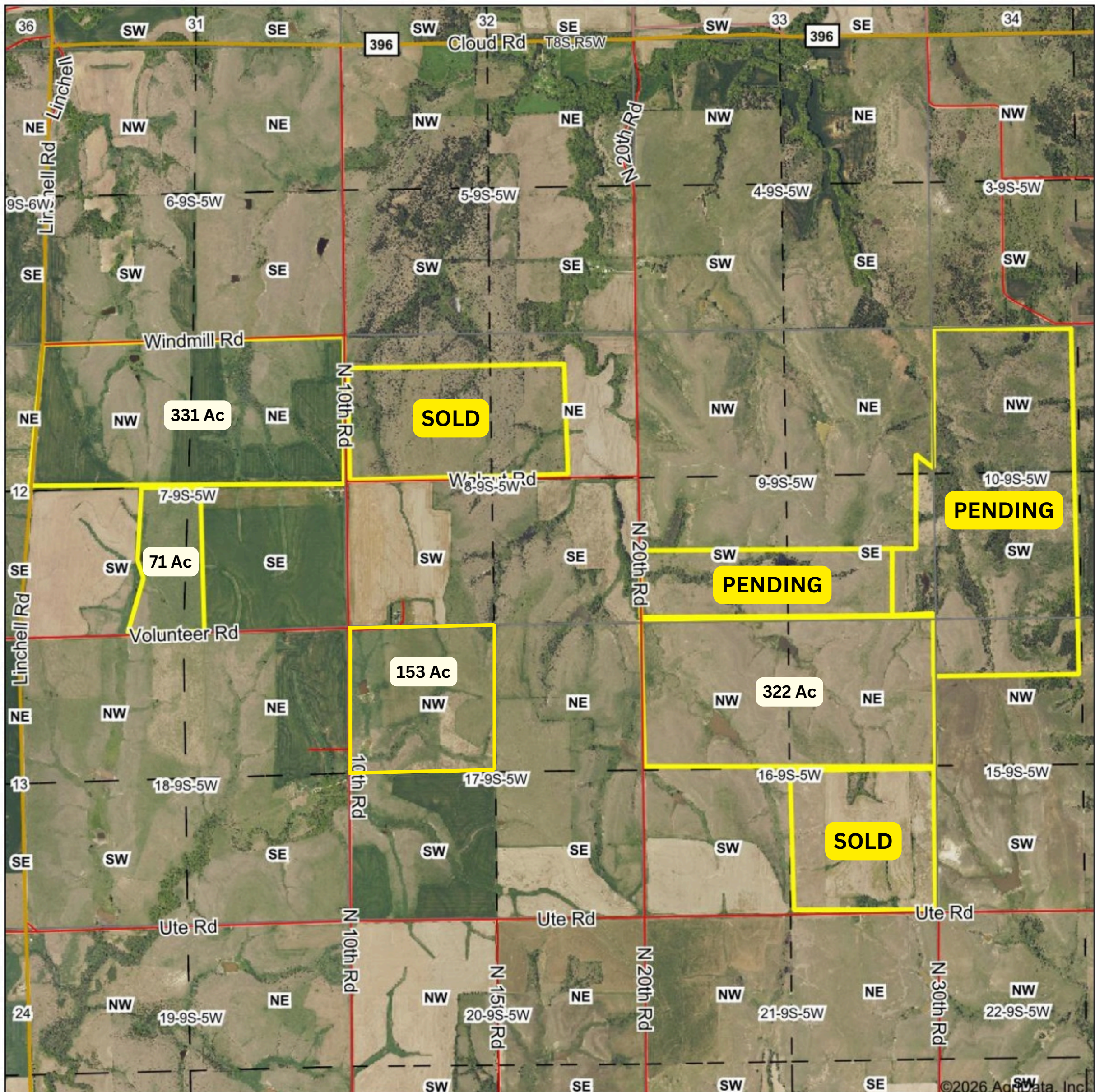


Seller does offer parcel splits!

Aerial Map

Taxes: \$5,253.23 on 877 taxable acres.
Approx. 877 acres +/- available at
\$2,800/acre.



HORIZON
FARM & RANCH REALTY, LLC
Formerly Barry's

- Farms & Ranches
- Rural Homes
- Auctions
- Hunting Property
- Value Assessments

Office 785-825-1199
Toll Free 888-825-1199
www.horizonfarmranch.com

Maps Provided By:



© AgriData, Inc. 2025

www.AgriDataInc.com

Boundary Center: 39° 16' 38.95, -97° 53' 50.97

0ft 2807ft 5614ft

17-9S-5W
Ottawa County
Kansas



2/11/2026